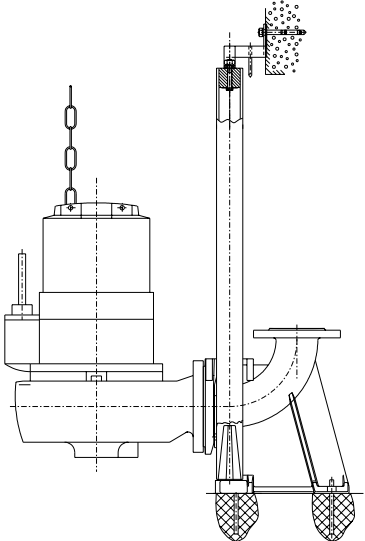


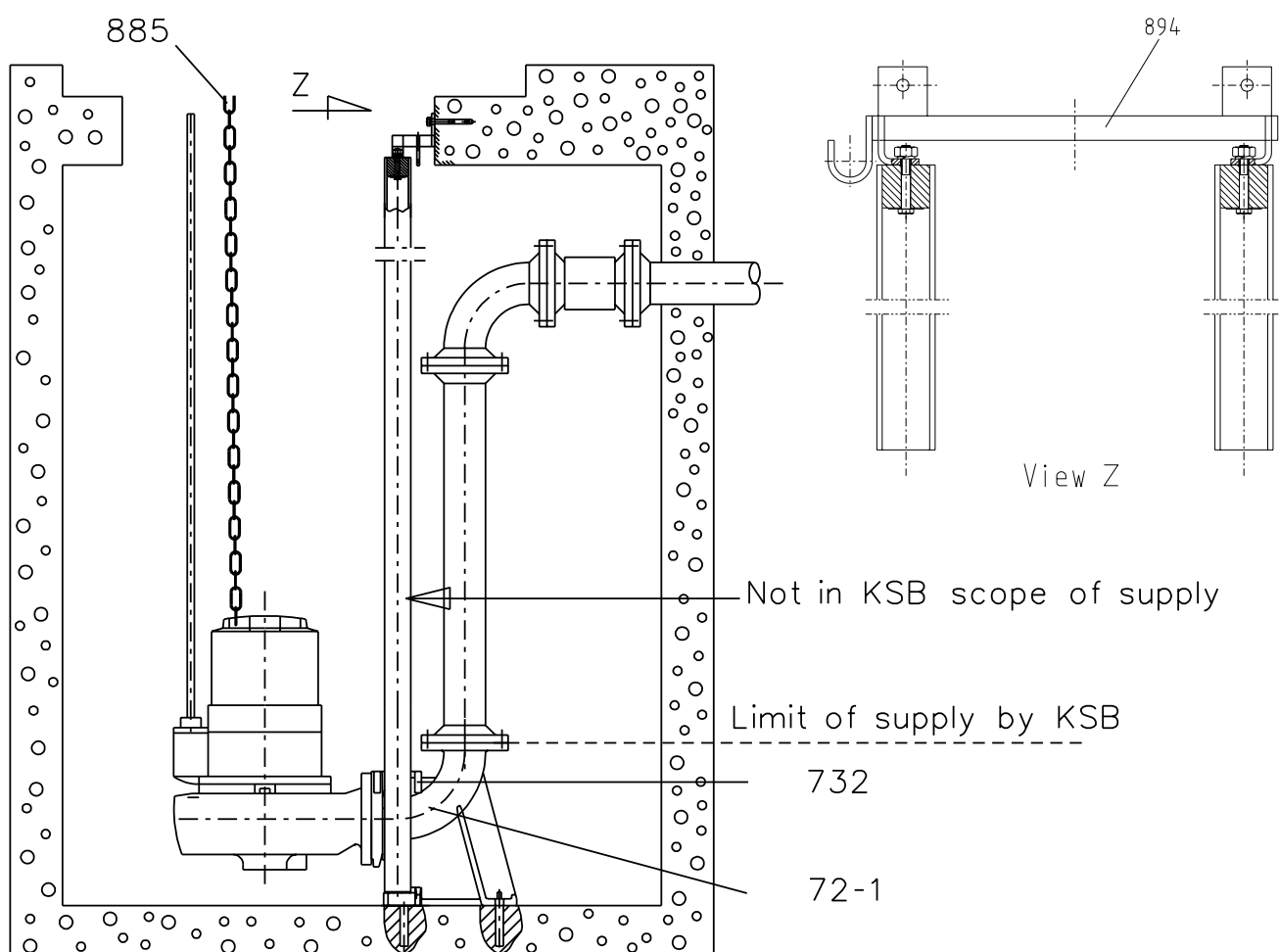
<p>Submersible motor pumps with guide rails</p> 	<table><tr><td>Series</td><td>KRT</td></tr><tr><td>Size</td><td>DN80...DN200 (excludes 200-500, 200-501 and 200-631)</td></tr><tr><td>Motor Size</td><td>82...232 (2 pole) 24...1554 (4 pole) 46...1006 (6 pole)</td></tr><tr><td>Material</td><td>G (Cast Iron)</td></tr></table>	Series	KRT	Size	DN80...DN200 (excludes 200-500, 200-501 and 200-631)	Motor Size	82...232 (2 pole) 24...1554 (4 pole) 46...1006 (6 pole)	Material	G (Cast Iron)
Series	KRT								
Size	DN80...DN200 (excludes 200-500, 200-501 and 200-631)								
Motor Size	82...232 (2 pole) 24...1554 (4 pole) 46...1006 (6 pole)								
Material	G (Cast Iron)								



These pages are our property and such they must be neither copied nor made available to third parties. Contravention will incur claims for damages.

Contents		Page
1	Wet-well installation – Guide rails.....	3
2	Outline Drawings.....	4
3	Exploded View.....	16
4	Increaser Installation.....	17
5	Kits Application.....	18

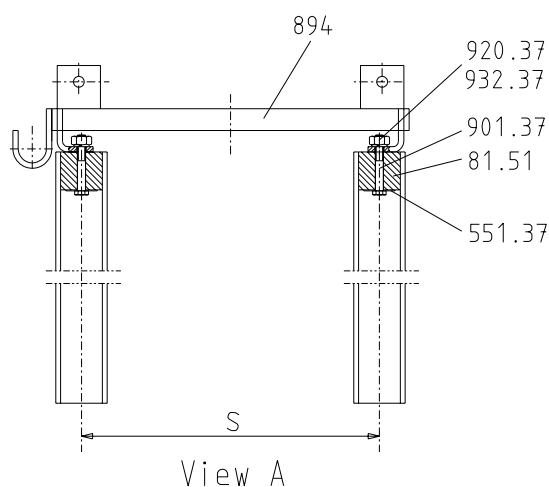
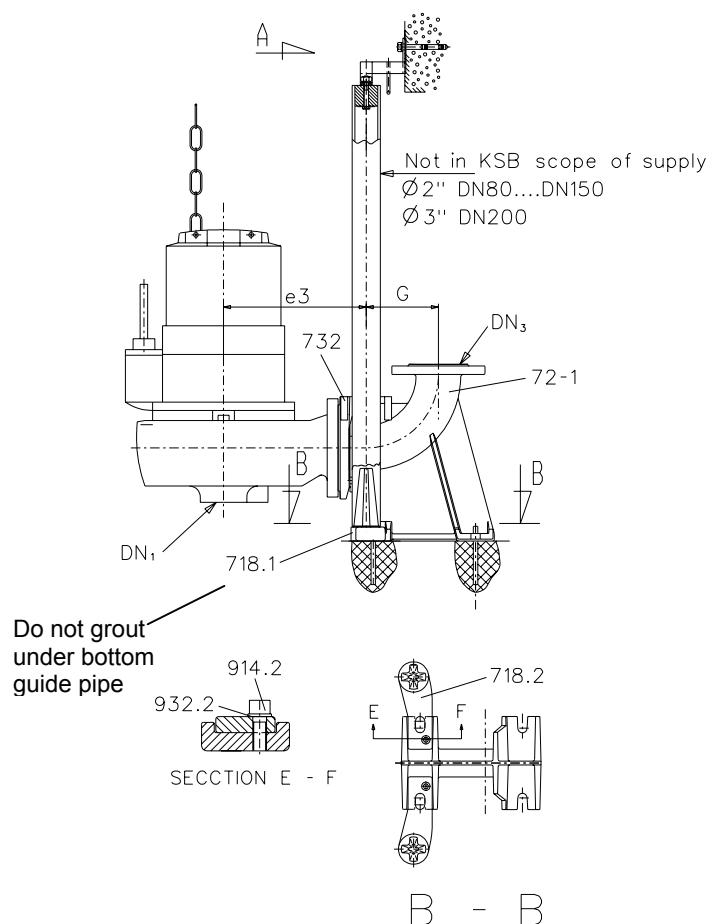
1 Wet-well installation – GUIDE RAILS



1.1 Inner and outer diameter acc. ANSI B36.19 for stainless steel pipes

Size of Pump	Nominal size of guide rail Inches	Inside diameter of guide rail Inches	
DN 80	2"	sch. 40S = 2,067"	sch. 80S = 1,94"
DN 100			
DN 150			
DN 200	3"	sch.40S = 3,068"	sch.80S = 2,90"

2. Outline drawings



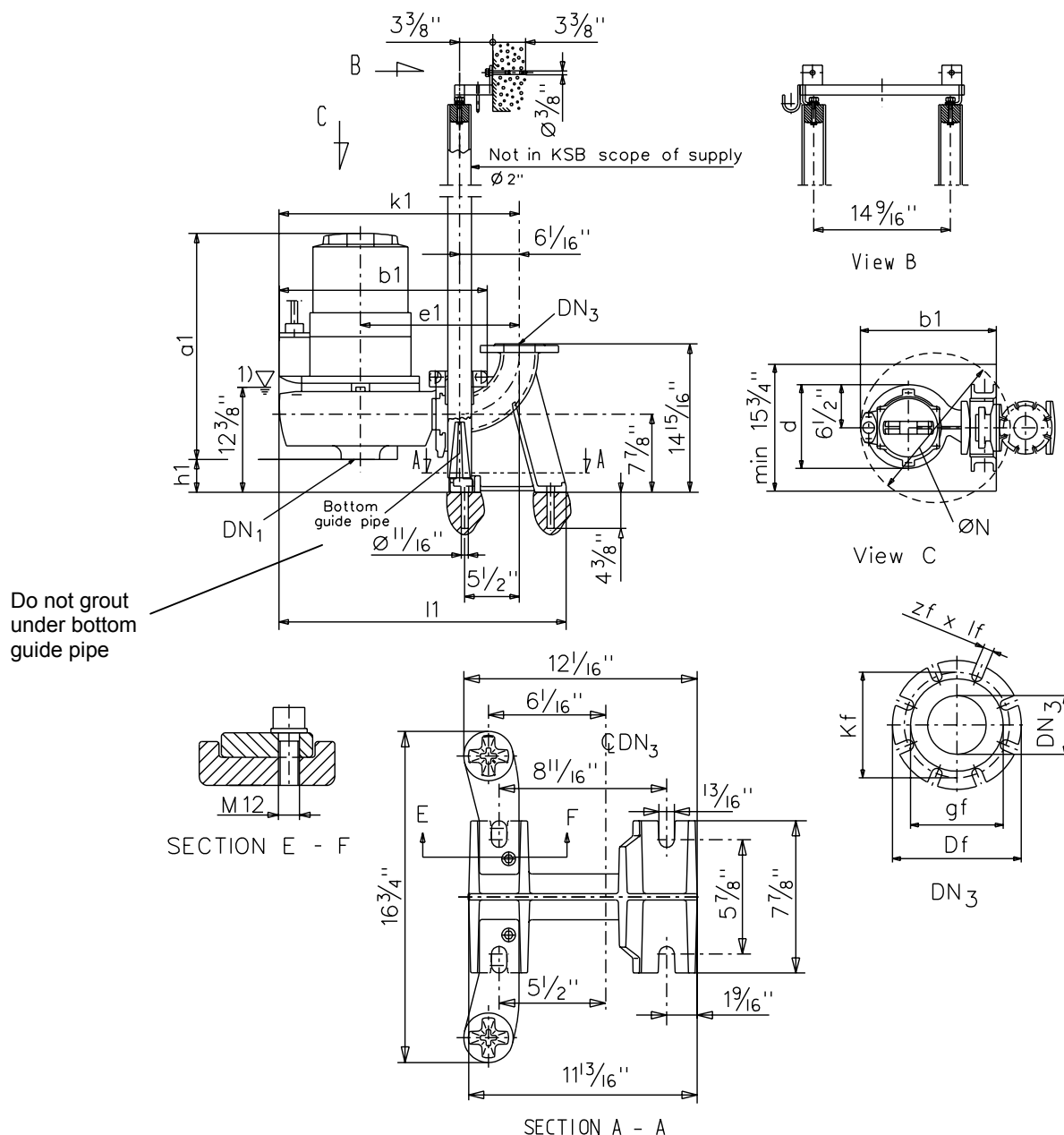
Kits Denominations	Part n°	Part Description	Qt
Bottom Guide Rail Bracket Kit	718.1/2	Bottom guide rail bracket	2
	914.1/2	Socket head cap screw	2
	72-1	Discharge Elbow	1
	932.1/2	Circlip	2
Claw Kit	550.35	Washer	8 ⁵⁾
	732	Claw	1
	914.35	Socket head cap screw ¹⁾	4
	902.35	Stud ²⁾	8 ⁵⁾
	920.35	Nut ²⁾	8 ⁵⁾
	99-6	Round cord ³⁾	1
Upper Guide Rail Bracket Kit	410	Profile Gasket ⁴⁾	1
	894	Upper Guide Rail Bracket	2
	901.37	Hexagon head bolt	2
	920.37	Nut	4
	550.31	Disc	2

Sizes	S	G	e3
80-200	14 9/16	6 1/6	9 3/4
80-250	14 9/16	6 1/6	12 1/2
80-251	14 9/16	6 1/6	12 1/2
80-315	14 9/16	6 1/6	12 5/16
100-200	13 13/16	6 1/2	9 5/8
100-250	13 13/16	6 1/2	12 5/8
100-251	13 13/16	6 1/2	12 5/8
100-316	13 13/16	6 1/2	14 15/16
100-401	13 13/16	6 1/2	18 1/4
150-251	17 1/2	7 7/8	17 7/8
150-315 (D)	17 1/2	7 7/8	18 15/16
150-315	17 1/2	7 7/8	17 3/4
150-401	17 1/2	7 7/8	21 1/8
151-401	17 1/2	7 7/8	21 1/8
200-280	20	9 1/4	21 5/8
200-281	20	9 1/4	21 5/8
200-315	20	9 1/4	23 9/16
200-330	20	9 1/4	23 9/16
200-401	20	9 1/4	21 9/16

Dimensions in inches

- 1) Only applied for sizes 100-200.
- 2) Except for sizes 100-200.
- 3) Only applied for size DN 200.
- 4) Except for size DN 200.
- 5) For sizes 80-200, 80-251 and 80-315, 4 pieces.

2.1 KRT 80-200 – Dimension Table



Flange – ANSI B 16.1 Class 125

DN ₃	gf	Kf	Df	zf	lf
4	6 1/4	7 1/2	9	8	13/16

Dimensions in inches

KRT ...-.../...		Dimensions in inches									Weight (lbs) G (material)
		DN ₁	a1	b1	d	e1	h1	k1	l1	N	
80-200	14	3	19 1/4	19 13/16	13 5/8	15 3/4	3 7/8	23	27 3/4	23	185
	24		19 7/8								198
	34										209

- 1) Lowest shut-off point for automatic operation.

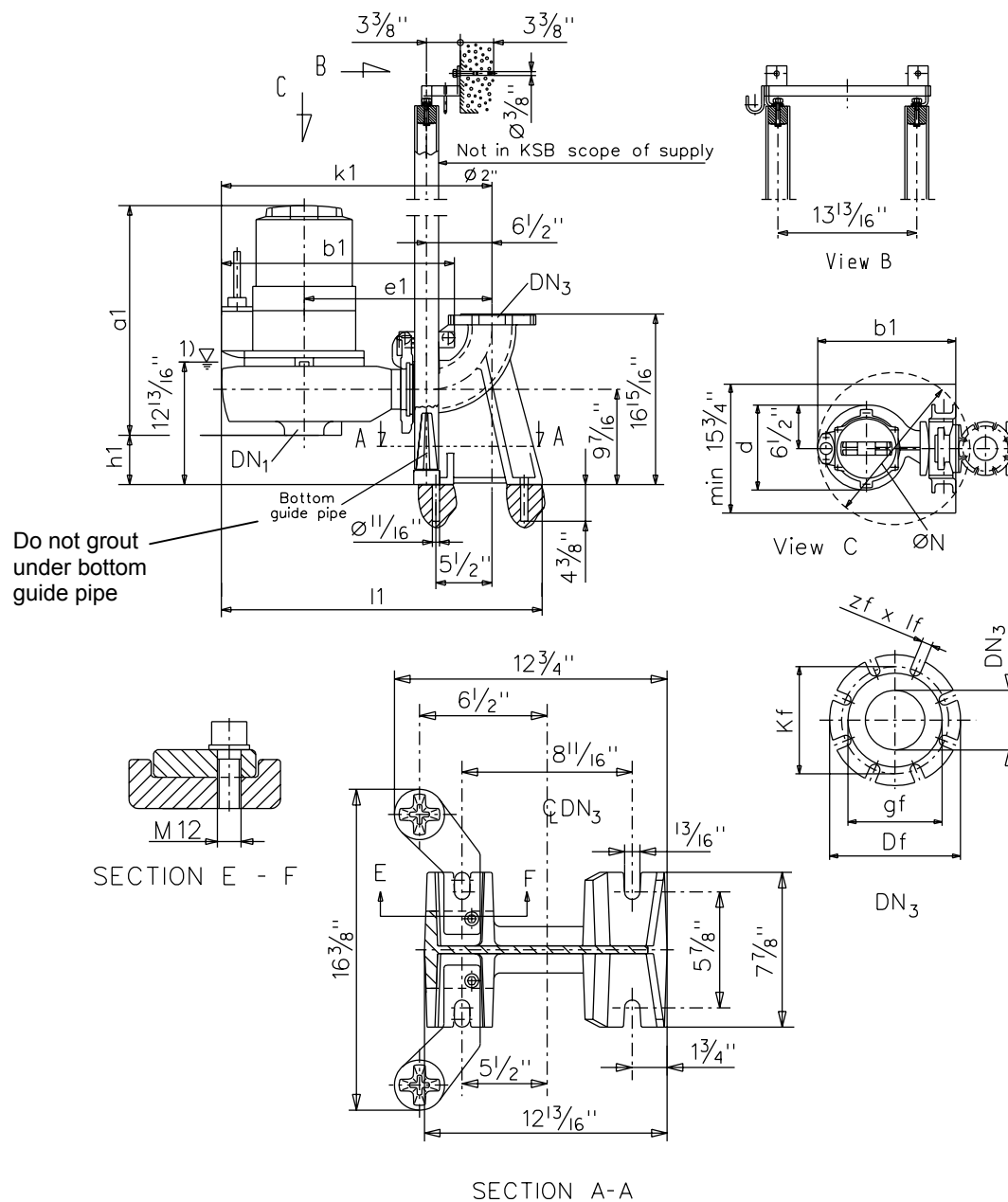
[illegible]

DN ₃	gf	Kf	Df	zf	lf
4	6 1/4	7 1/2	9	8	13/16

KRT ...-.../...	Dimensions in inches									Weight (lbs) G (material)
	DN ₁	a1	b1	d	e1	h1	k1	l1	N	
80-250 54	4	23 1/2	23 15/16	15	18 1/2	3	27 1/8	31 7/8	26 3/8	305
74										335
114		24 5/8								365
164										390
80-250/ 46		23 1/2								305
66										330
96										355
126										385
82	3 1/8	24	23 1/2	14	18 1/4	3 7/16	27	31 1/4	26 3/16	335
122		25 1/4	23 3/4							340
172			390							
232		30 3/4	25 1/8							15 3/4

6

2.3 KRT 100-200 – Dimension table



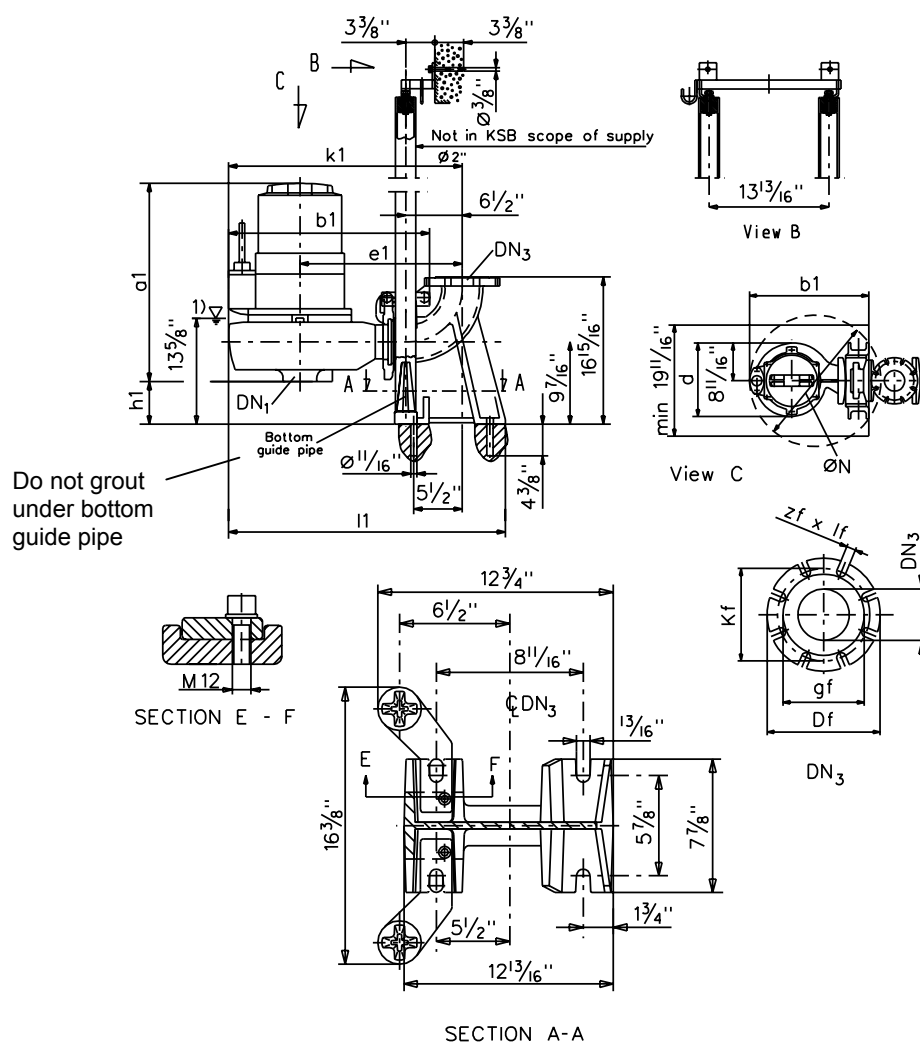
Flange – ANSI B 16.1 Class 125

DN ₃	gf	Kf	Df	zf	lf
4	6 1/4	7 1/2	9	8	13/16

Dimensions in inches

KRT/...	Dimensions in inches									Weight (lbs) G (material)
	DN ₁	a1	b1	d	e1	h1	k1	l1	N	
	100-200/— 24 34	4 3/8	20 5/8	19 11/16	12 5/8	16 1/8	4 7/8	23 3/8	28 3/8	22 9/16
										196 205

1) Lowest shut-off point for automatic operation

2.4 KRT 100-250, 100-251 – Dimension table


Flange – ANSI B 16.1 Class 125

DN ₃	gf	Kf	Df	zf	lf
4	6 1/4	7 1/2	9	8	13/16

Dimensions in inches

KRT ...-.../...	Dimensions in inches									Weight (lbs) G (material)
	DN ₁	a1	b1	d	e1	h1	k1	l1	N	
100-250/ 100-251/	4	54	24	15 1/4	19 1/8	4 7/16	27 3/4	32 11/16	26 7/16	310
		74								345
		114								375
		164								400
100-251	4	46	24	15 1/4	19 1/8	4 7/16	27 3/4	32 11/16	26 7/16	310
		66								345
		96								375
		126								400

1) Lowest shut-off point for automatic operation

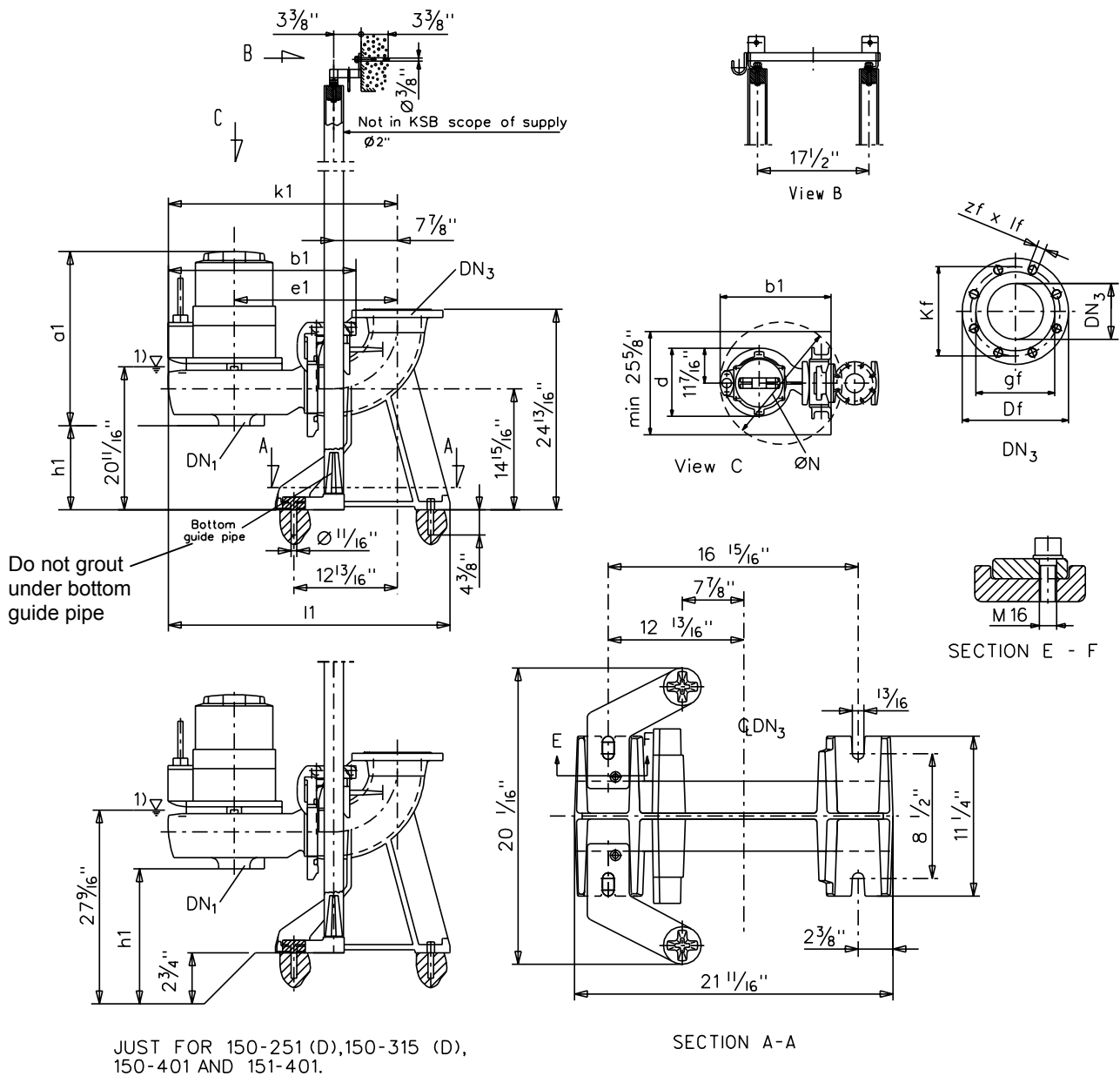
2.5 KRT 100-316, 100-401 – Dimension table



Flange – ANSI B 16.1 Class 125

Dimensions in inches

1) Lowest shut-off point for automatic operation

2.6 KRT 150-251, 150-315 – Dimension table


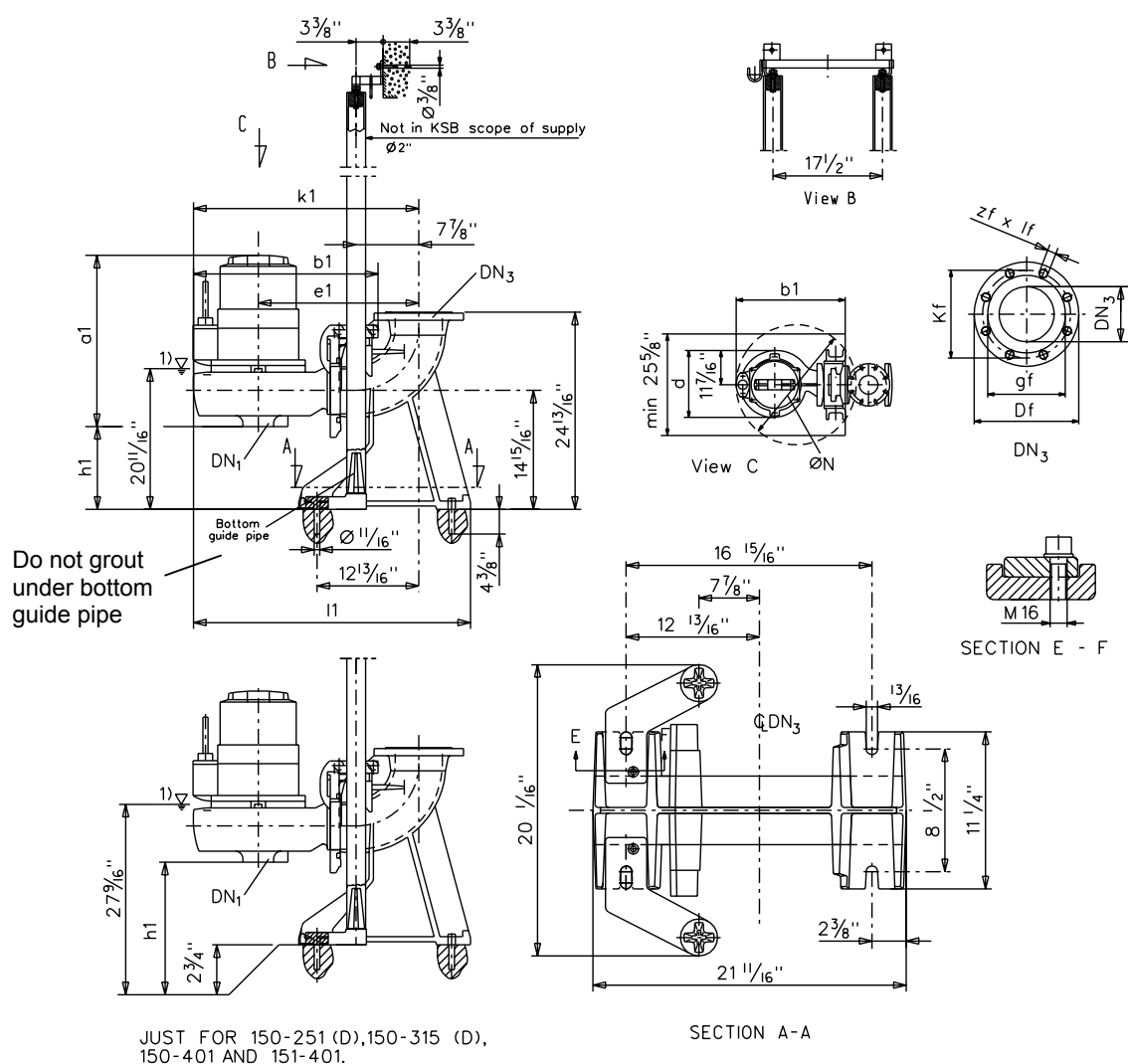
Flange – ANSI B 16.1 Class 125

DN ₃	g _f	K _f	D _f	z _f	l _f
6	8 1/2	9 1/2	11	8	7/8

Dimensions in inches

KRT ...-.../...		Dimensions in inches									Weight (lbs) G (material)
		DN ₁	a1	b1	d	e1	h1	k1	l1	N	
150-251 (D)	46	6	26 3/4	30 11/16	20 11/16	25 11/16	8 7/16	35 3/4	42 5/16	33 7/16	430
	66										455
	96		28								500
150-315 (F, E, K)	46	6	28	31 11/16	21 1/8	25 5/8	8 1/2	36 1/4	42 3/4	33 15/16	500
	66										520
	96		29 1/8								545
	126										565
	206		34 5/8								700
	266		33 1/2								755

1) Lowest shut-off point for automatic operation

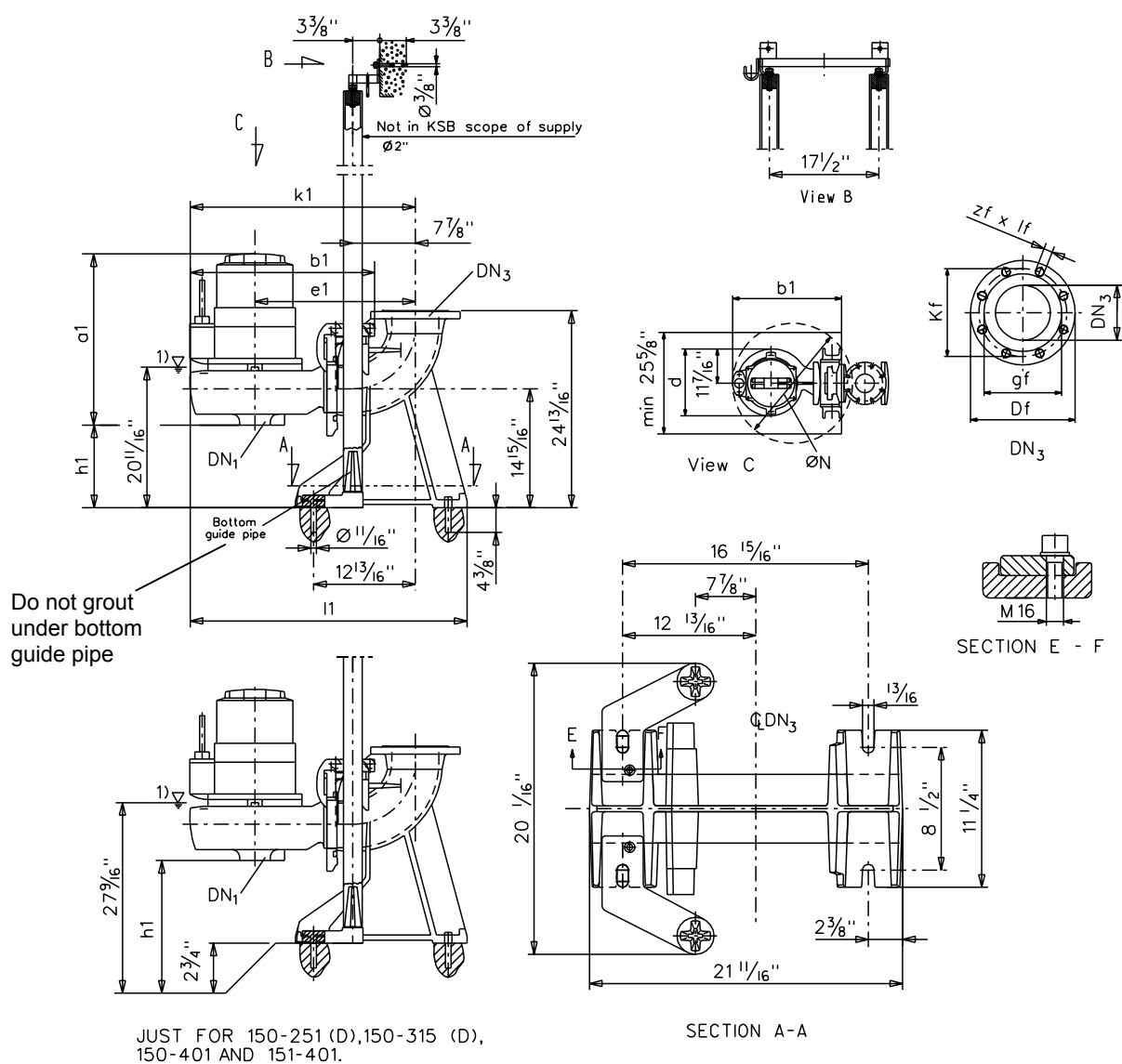
2.7 KRT 150-315 (D), 150-401 – Dimension table

Flange – ANSI B 16.1 Class 125

DN ₃	gf	Kf	Df	zf	lf
6	8 1/2	9 1/2	11	8	7/8

Dimensions in inches

KRT/...	Dimensions in inches									Weight (lbs)	
	DN ₁	a1	b1	d	e1	h1	k1	l1	N	G (material)	
150-315 (D)	6	96	30 5/16	33 9/16	23 5/8	26 3/4	6 5/16	38 9/16	42 1/16	37 3/8	695
		126									720
		206	35 3/4	860							
150-401 (F, E, K)	6	504	45 1/4	37 11/16	23 3/4	28 15/16	7 13/16	42 15/16	49 7/16	47 1/4	1370
		654	62 3/4	36 1/2			5 1/8	41 9/16	48 7/16		1445
		804									2205
		954	70 11/16	34 15/16			7 13/16	41 9/16	48 1/16		2340
		1104									2425
		1304									2980
		1554	39 15/16	36 1/2			5 1/8	41 9/16	48 7/16		3090
		206									970
		266	39	45 1/4			37 11/16	42 15/16	49 7/16		1015
		326	62 3/4								36 1/2
		406		1370							
		506	70 11/16	36 1/2			5 1/8	41 9/16	48 7/16		1445
		606									2985
		806	70 11/16	36 1/2			5 1/8	41 9/16	48 7/16		2625
		1006									2780

1) Lowest shut-off point for automatic operation

2.8 KRT 151-401 – Dimension table


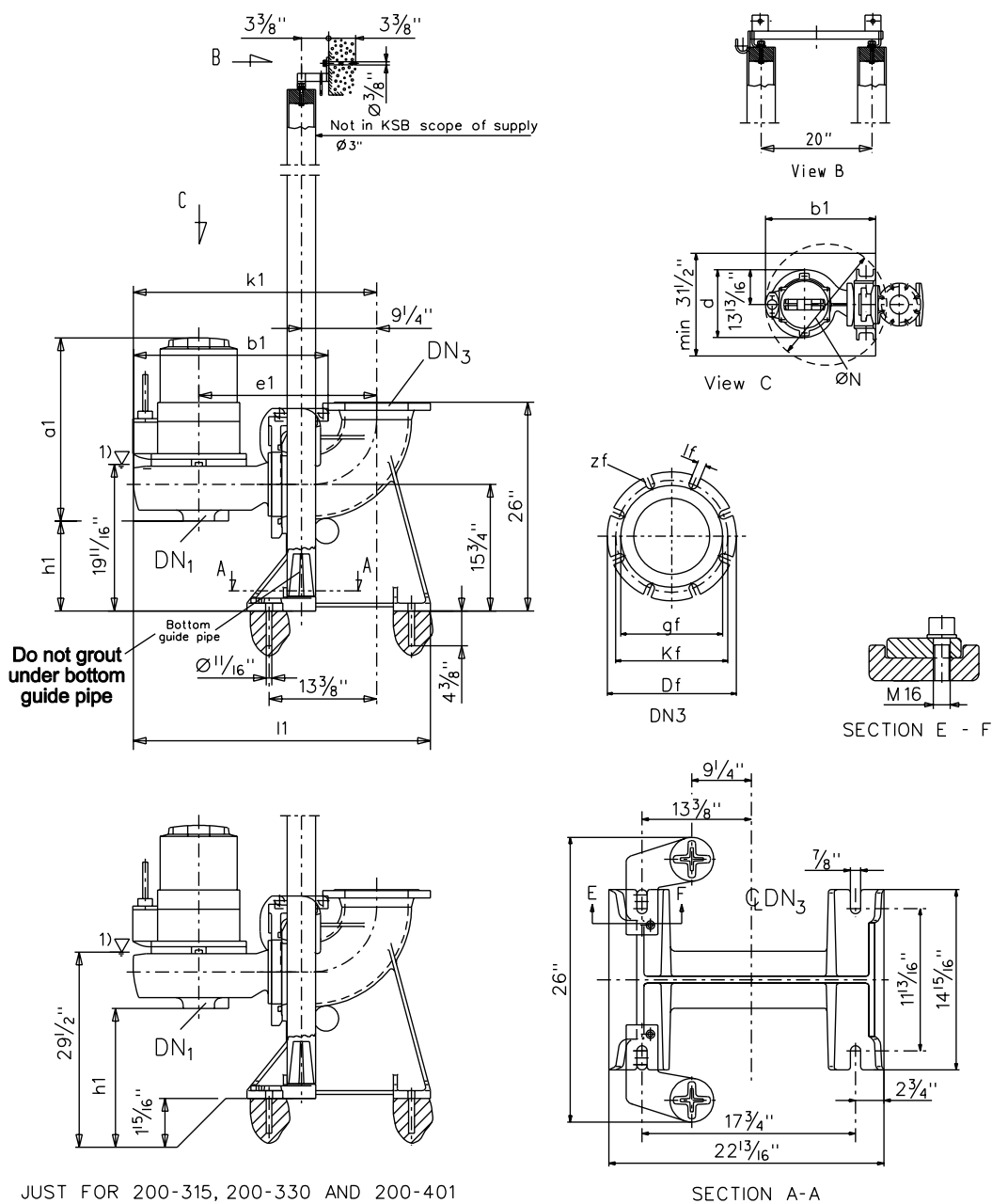
Flange – ANSI B 16.1 Class 125

DN ₃	gf	Kf	Df	zf	lf
6	8 1/2	9 1/2	11	8	7/8

Dimensions in inches

KRT ...-.../...		Dimensions in inches								Weight (lbs) G (material)	
DN ₁		a1	b1	d	e1	h1	k1	l1	N		
151-401 (K)	654	6	45 1/4	37 11/16	23 3/4	28 15/16	7 13/16	42 15/16	49 7/16	47 1/4	1445
	804		62 3/4	36 1/2			5 1/8	41 9/16	48 7/16	43 5/16	2205
	954		70 11/16								2340
	1104		73 3/4								2425
	1304			2980							
	1554			3090							
	326		45 1/4	37 11/16			7 13/16	42 15/16	49 7/16	47 1/4	1305
	406										1370
	506										1446
	606										2985
	806										2625
	1006		70 11/16	36 1/2			5 1/8	41 9/16	48 7/16	43 5/16	2780

1) Lowest shut-off point for automatic operation

2.9 KRT 200-280, 200-281, 200-315 – Dimension table

Flange – ANSI B 16.1 Class 125

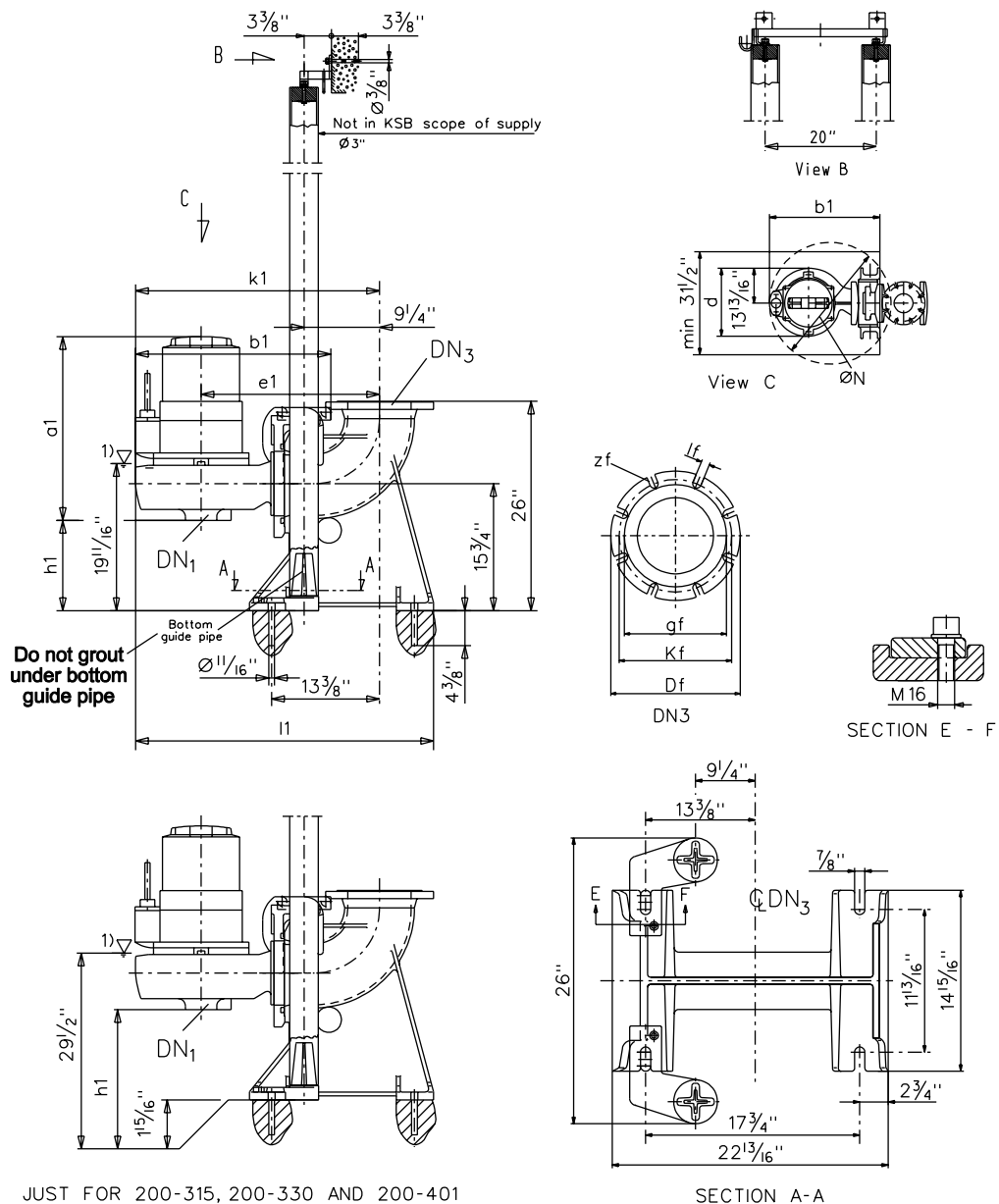
DN_3	g_f	K_f	D_f	z_f	l_f
8	10 9/16	11 5/8	13 3/8	8	1

Dimensions in inches

		Dimensions in inches									Weight (lbs) G (material)
KRT ...-.../...		DN ₁	a1	b1	d	e1	h1	k1	l1	N	
200-280/ 200-281 (K)	66	8	28 3/4	37 11/16	23 1/2	30 7/8	7 5/8	42 3/8	49	39 5/8	705
	96		29 7/8								730
	126		35 1/2								750
	206		34 1/4								855
	266		37 3/4								945
200-315 (D)	96	8	32 5/16	40 13/16	27 9/16	32 13/16	7 1/16	46 5/8	53 3/8	47 1/4	830
	126		37 3/4								830
	206		37 3/4								985

1) Lowest shut-off point for automatic operation

2.10 KRT 200-330 – Dimension table



Flange – ANSI B 16.1 Class 125

DN ₃	gf	Kf	Df	zf	lf
8	10 9/16	11 5/8	13 3/8	8	1

Dimensions in inches

KRT ...-.../...		Dimensions in inches								Weight (lbs) G (material)		
DN ₁		a1	b1	d	e1	h1	k1	l1	N			
200-330 (K)	504	10	42 11/16	41	25 3/16	32 13/16	10 5/8	46 13/16	53 9/16	47 1/4	1535	
	654											1610
	804		60 5/8	39 13/16	24 3/4			45 11/16	52 3/8		2470	
	954		68 1/2								2690	
	1104										2890	
	1304		71 5/8		3245							
	1554				3355							
	206		37 3/8	39 5/8	25 3/16			45 1/2	52 3/16		1115	
	266		36 7/16								1170	
	326		42 11/16	41				46 13/16	53 9/16		1480	
	406										1535	

1) Lowest shut-off point for automatic operation

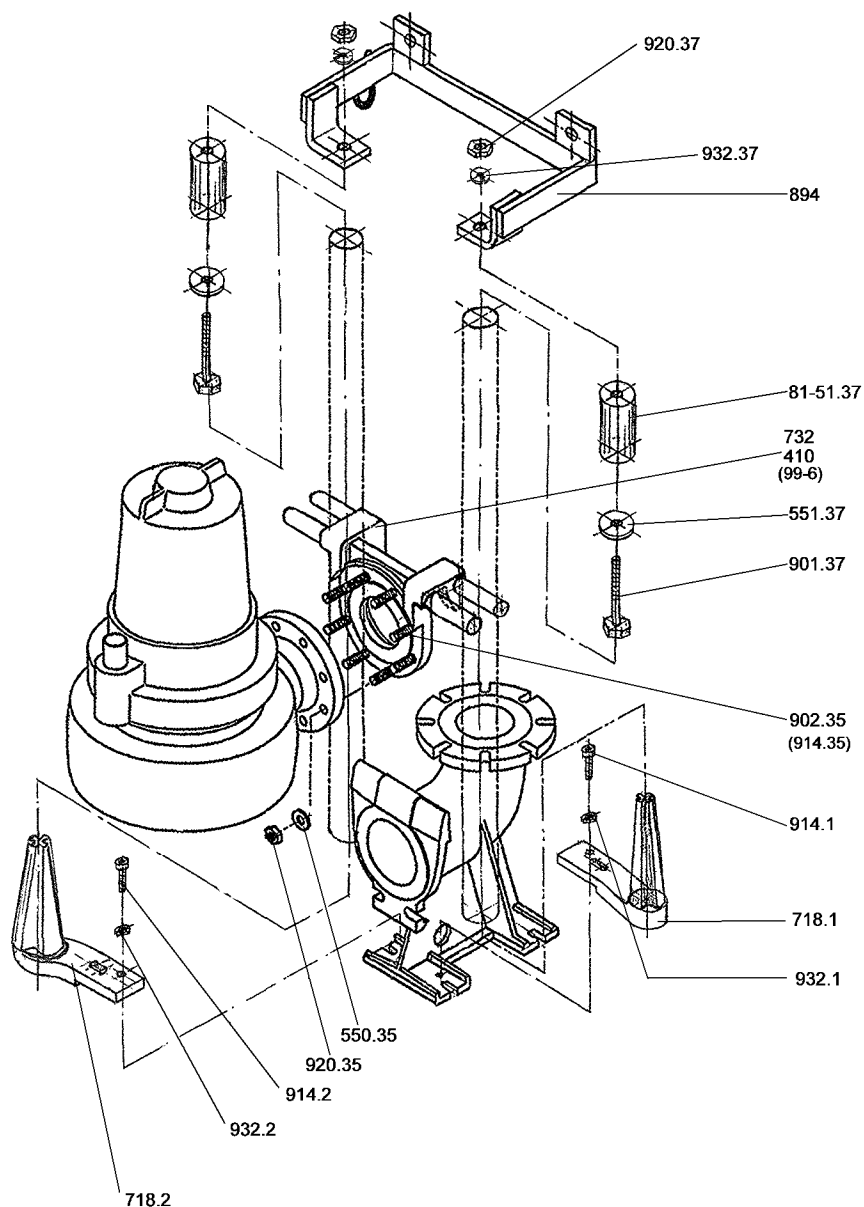
[illegible]

DN ₃	gf	Kf	Df	zf	lf
8	10 9/16	11 5/8	13 3/8	8	1

		Dimensions in inches								Weight (lbs)	
KRT	...	DN ₁	a1	b1	d	e1	h1	k1	l1	N	G (material)
200-401 (K)	804	8	64 3/16	38	25 3/16	30 13/16	8 11/16	43 11/16	50 3/8	47 1/4	2580
	954		72 1/16								2800
	1104		75 3/16								3000
	1304		40 3/16								37 11/16
	1554		46 7/16	39				43 1/2	50 3/16		3465
	266		64 3/16	38				44 13/16	51 9/16		1115
	326		72 1/16	50 3/8				1400			
	406								1470		
	506								1545		
	606								2670		
	806								2890		
	1006								3045		

15

3. Exploded view

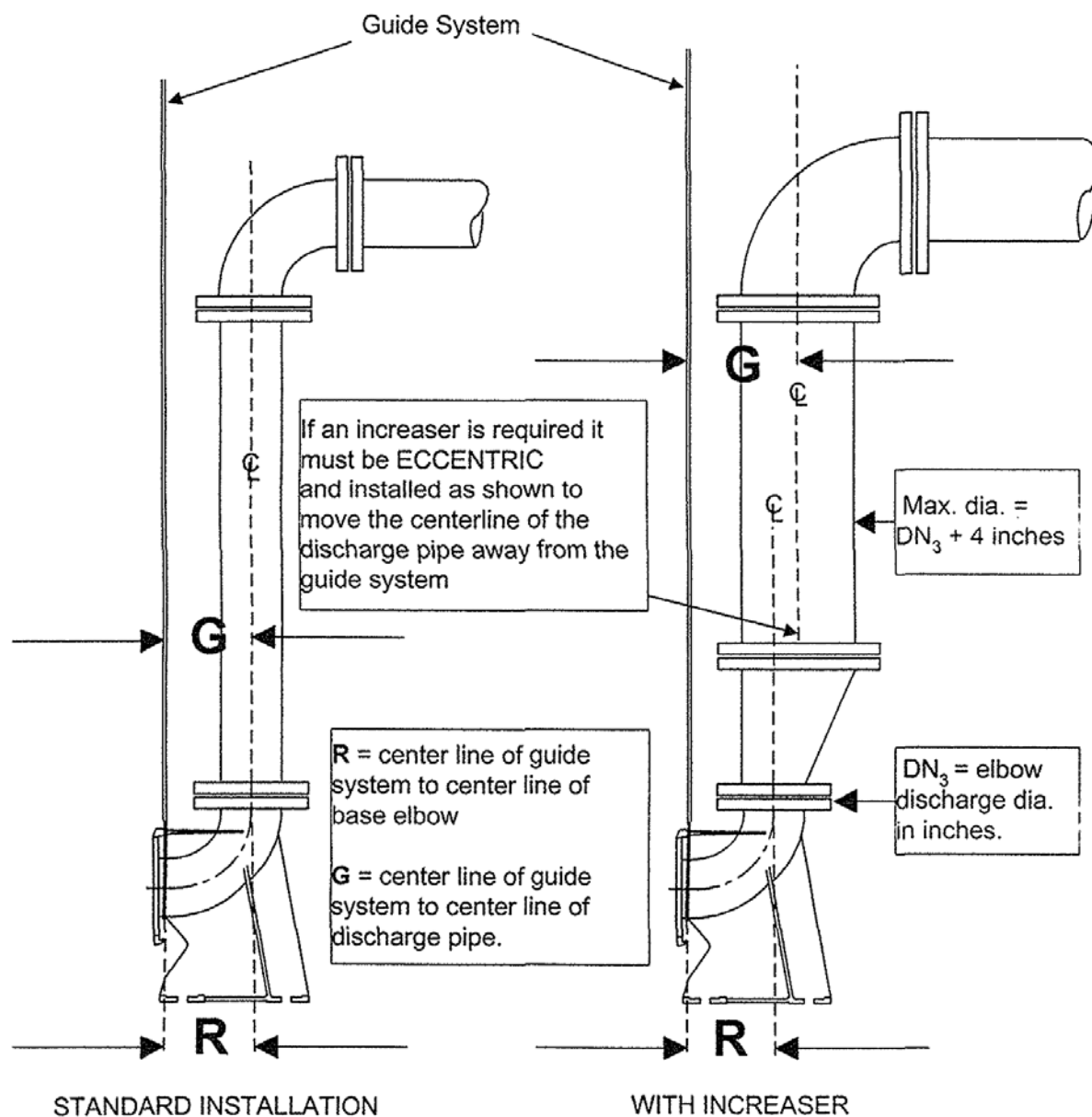


Kits Denominations	Part no.	Part Description	Qt
Bottom Guide Rail Bracket Kit	718.1	Right Bottom Guide Rail Bracket	1
	718.2	Left Bottom Guide Rail Bracket	1
	914.1	Socket head cap screw	1
	914.2	Socket head cap screw	1
	72-1	Discharge Elbow	1
	932.1	Circlip	1
	932.2	Circlip	1
Claw Kit	550.35	Washer	8 ⁵⁾
	732	Claw	1
	914.35	Socket head cap screw ¹⁾	4
	902.35	Stud ²⁾	8 ⁵⁾
	920.35	Nut ²⁾	8 ⁵⁾
	99-6	Round cord ³⁾	1
	410	Profile Gasket ⁴⁾	1

Notes

- 1-) Only applied for sizes 100-200
- 2-) Except for sizes 100-200
- 3-) Only applied for size DN 200.
- 4-) Except for size DN 200.
- 5-) For sizes 80-200, 80-251 and 80-315, 4 pieces.
- 6-) Do not grout under part number 718.1 and 718.2.

4. Increaser Installation



5. Kits Application

Pipe guide Kit application

Pump Size														Indent Nr.
80-200	80-250/251	80-315	100-200	100-250/251	100-316	100-401	150-251	150-315/316	150/151-401	200-280/281	200-315	200-330	200-401	
X	X	X												3349A9166
			X	X	X	X								3349C1080
							X	X	X					3349C1079
										X	X	X	X	3349C1077

Claw Kit application

Pump Size														Indent Nr.
80-200	80-250/251	80-315	100-200	100-250/251	100-316	100-401	150-251	150-315/316	150-151-401	200-280/281	200-315	200-330	200-401	
X	X	X												3349C3774
				X	X	X								3349C3775
			X											3349A6564
							X	X	X					3349C3776
										X	X	X	X	314991641

14.08.2006

A2553.0.1E/5

KSB Bombas Hidráulicas SA

Rua José Rabello Portella, 400

Várzea Paulista SP 13220-540

Brazil <http://www.ksb.com>

phone.: 55 11 4596 8500 Fax: 55 11 4596 8580

SAK – KSB Customer Servicee-mail: gqualidade@ksb.com.br

Fax: 55 11 4596 8656