

Axial Split Volute Casing Pump

Omega

General Arrangement Drawings – 50 Hz



Legal information/Copyright

General Arrangement Drawings Omega 50 Hz

All rights reserved. The contents provided herein must neither be distributed, copied, reproduced, edited or processed for any other purpose, nor otherwise transmitted, published or made available to a third party without the manufacturer's express written consent.

Subject to technical modification without prior notice.

© KSB Brasil Ltda., Várzea Paulista 03/12/2021

Contents

| | |
|---|----|
| Water supply | 4 |
| Axially Split Volute Casing Pump | 4 |
| Omega | 4 |
| Connections | 5 |
| Types of installation | 6 |
| Types of installation - Fig. 0 (bareshaft pump) | 7 |
| Types of installation - 3E - Omega 80-210 to 80-370 | 10 |
| Types of installation - 3E - Omega 100-250 to 100-375 | 13 |
| Types of installation - 3E - Omega 125-230 to 125-365 | 16 |
| Types of installation - 3E - Omega 125-500 to 150-460 | 19 |
| Types of installation - 3E - Omega 150-605 to 200-520 | 23 |
| Types of installation - 3E - Omega 200-670 to 250-480 | 27 |
| Types of installation - 3E - Omega 250-600 to 300-300 | 30 |
| Types of installation - 3E - Omega 300-435 to 300-700 | 33 |
| Types of installation - 3E - Omega 350-360 to 350-510 | 36 |
| Dimensions of the anchor bolts | 40 |

Water Supply

Axially Split Volute Casing Pump

Omega



Designation

Example: Omega 150 – 460 A GB P M

Designation key

| Code | Description |
|--------------|--|
| Omega | Type series |
| | Design |
| | 4) Horizontal installation |
| 150 | Nominal discharge nozzle diameter [mm] |
| 460 | Nominal impeller diameter [mm] |
| A | Impeller type |
| GB | Material variant |
| | GB Gray cast iron / bronze |
| | GC Gray cast iron / chrome steel |
| | SB Nodular cast iron / bronze |
| | SC Nodular cast iron / chrome steel |
| | DD ₃₅ Duplex stainless steel / duplex stainless steel |
| P | Shaft seal |
| | P Gland packing |
| | G Mechanical seal |
| M | Bearing lubrication |
| | F Grease |
| | M Fluid handled |

Connections

Omega

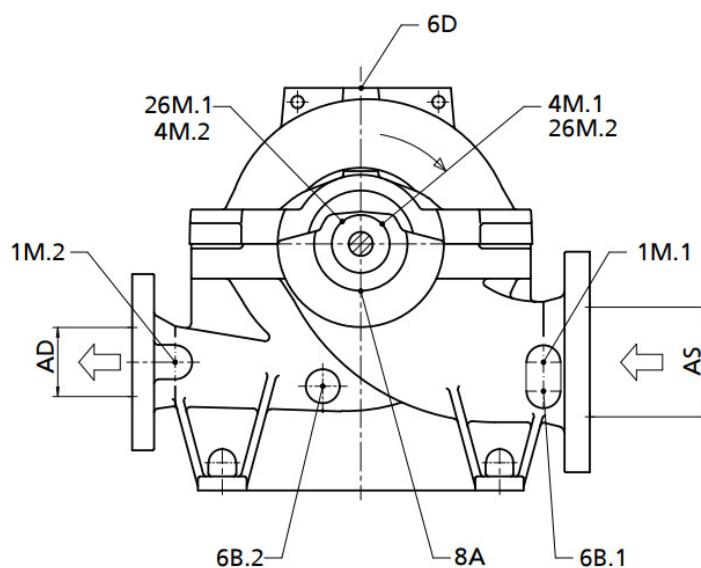


Fig. 1: Connections: Omega

Connections and thread sizes: Omega

| Connection | Description | Qty. | Thread |
|--------------------|---|------|--------|
| AS | Connection on the suction side of the pump | 1 | - |
| AD | Connection on the discharge side of the pump | 1 | - |
| 1M.1 | Connection for pressure measurement on the suction side | 2 | G 1/2 |
| 1M.2 | Connection for pressure measurement on the discharge side | 2 | G 1/2 |
| 4M.1 | Connection for temperature measurement at the drive end | 1 | G 3/8 |
| 4M.2 | Connection for temperature measurement at the non-drive end | 1 | G 3/8 |
| 6B.1 ¹⁾ | Connection for pump drain on the suction side | 2 | G 1/2 |
| 6B.2 | Connection for pump drain on the discharge side | 2 | G 1/2 |
| 6D | Connection for venting the pump | 1 | G 1/2 |
| 8A | Connection for leakage drain | 2 | G 3/4 |
| 26M.1 | Connection for vibration measurement at the drive end | 1 | M8 |
| 26M.2 | Connection for vibration measurement at the non-drive end | 1 | M8 |

1) Only for sizes 100-375, 150-290, 150-360, 150-605, 200-420, 200-520, 200-670, 250-600, 250-800, 300-300, 300-435, 300-560, 300-700, 300-860, 350-430 e 350-510.

Types of installation

Fig. 0

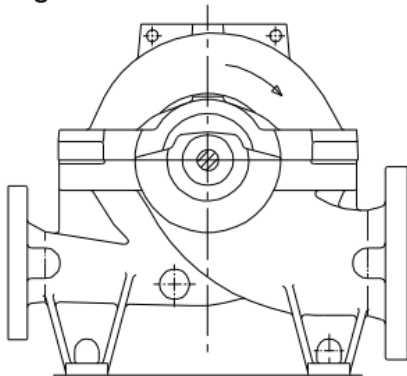


Fig. 2: Fig. 0: Bare shaft pump

Options of installation parts:

- None

Coupling options:

- Torsionally flexible 3-piece jaw coupling
- Torsion-resistant flexible disc coupling (on request) ³⁾

Coupling guard options:

- Light-duty design, not tread-proof

Delivery/ transport:

- Pump

3E

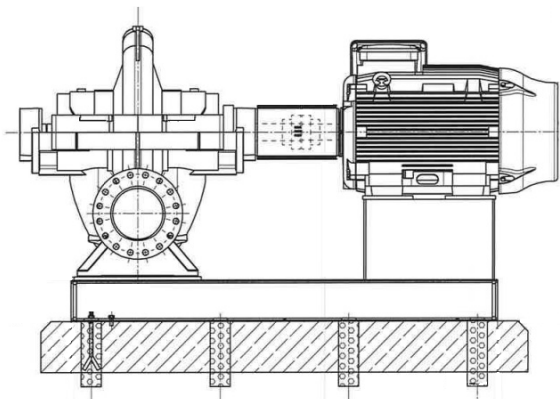


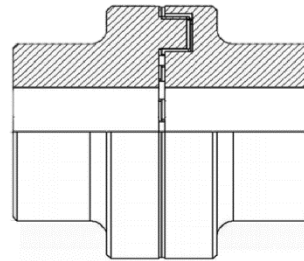
Fig. 3: 3E Pump and motor on a common base frame

Options of installation parts:

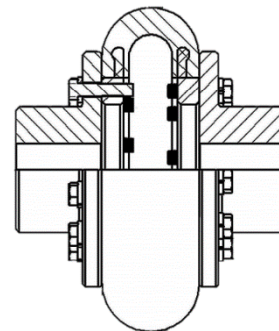
- Base frame for pump and motor
- Special base frame for pump and motor ²⁾

Coupling options:

- AE flexible coupling with 2 hubs and elastic element



- AW flexible coupling with 2 hubs, AW screws and elastic element



- Torsion-resistant flexible disc coupling (on request) ³⁾

Coupling guard options:

- Light-duty design, not tread-proof
- Heavy-duty, tread-proof design (on request)

Delivery/ transport:

- Up to motor size \leq IEC 280M or a max. total weight \leq 1500 kg pump and motor are supplied on the base frame
- From motor size $>$ IEC 280M or a max. total weight $>$ 1500 kg, pump, motor and base frame are supplied separately.

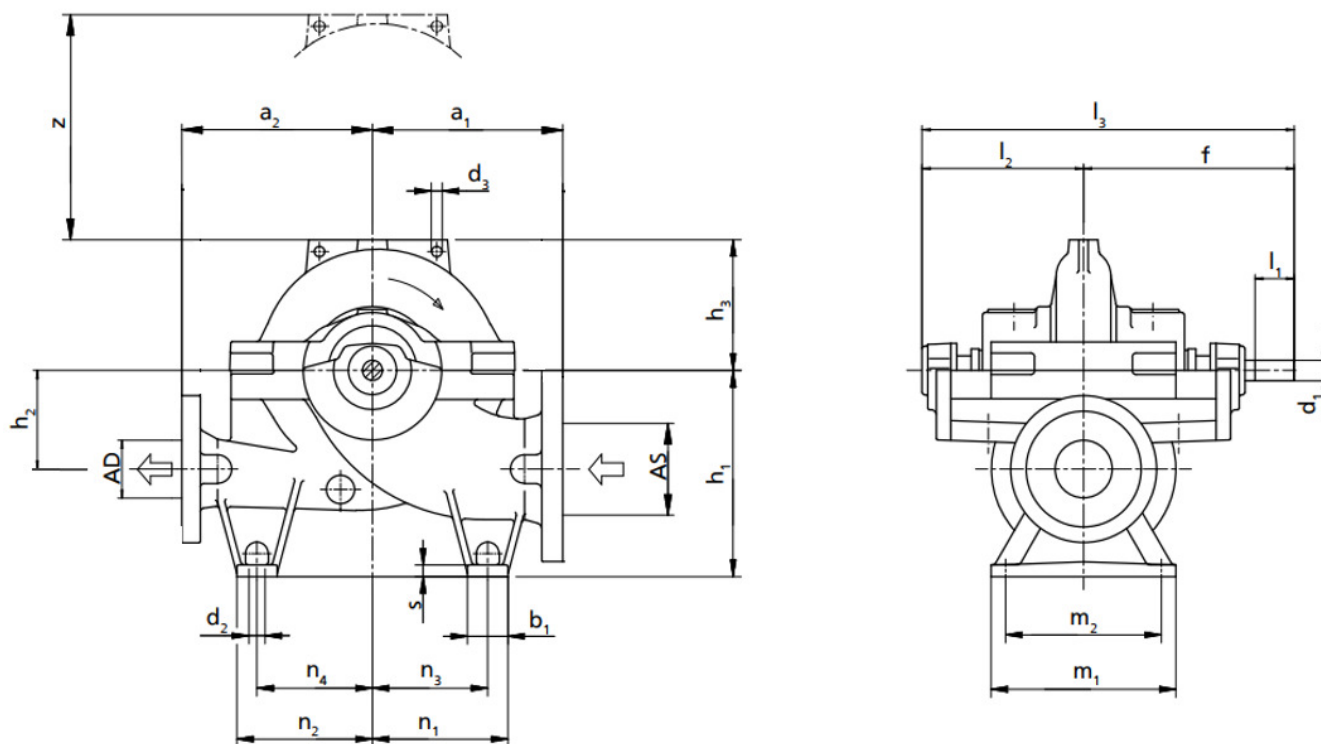
2) On request only; for motors $>$ IEC 280M and motors outside KSB standard as well as for other customer specific versions, special base frame for transporting pump sets with motors $>$ IEC 280M

3) On request only; special base frame required

Types of installation

Fig. 0

Dimensions: Omega, horizontal installation, Fig. 0 (bare-shaft pump)



Permissible dimensional deviations for dimensions without tolerance indication:

- General: ISO 2768 CK
- Shaft centreline heights: DIN 747
- Welded parts: ISO 13920-B/F
- Flange position: ISO 8062-3-DCTG13
- Flanges: to the corresponding standard
- Keyway and key: DIN 6885, sheet 1
- Shaft diameter (coupling): DIN 7155-h₆

Information on installation:

This drawing is not true to scale; it serves as an example only. The piping must be connected without transmitting any stresses or strains. The pump must not be used as support for the piping. Pipes must be fastened without transmitting any forces, vibrations or pipe weight to the pump. Observe the limits for forces and moments at the suction and discharge nozzle. It is impermissible to connect the pump with unbraced expansion joints.

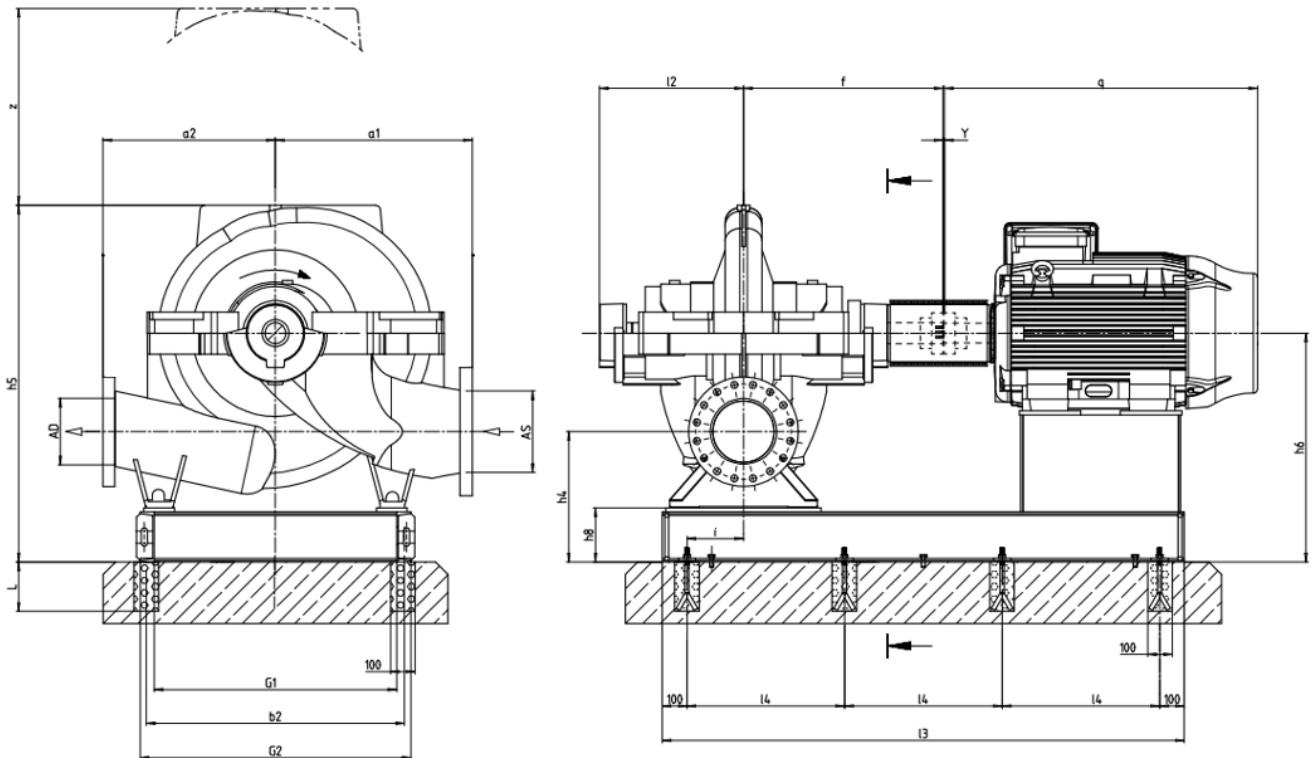
| Size | Pump dimensions [mm] | | | | | | | | | | | |
|---------|----------------------|-----|----------------|----------------|----------------|-----|----------------|----------------|----------------|----------------|----------------|-----|
| | AS | AD | a ₁ | a ₂ | d ₃ | f | h ₁ | h ₂ | h ₃ | l ₂ | l ₃ | z |
| 80-210 | 125 | 80 | 300 | 300 | 19 | 415 | 315 | 140 | 168 | 300 | 715 | 168 |
| 80-270 | 125 | 80 | 300 | 300 | 19 | 415 | 315 | 140 | 190 | 300 | 715 | 190 |
| 80-370 | 125 | 80 | 330 | 330 | 19 | 415 | 315 | 140 | 225 | 300 | 715 | 225 |
| 100-250 | 150 | 100 | 330 | 330 | 19 | 415 | 355 | 170 | 195 | 300 | 715 | 195 |
| 100-310 | 150 | 100 | 330 | 330 | 19 | 415 | 355 | 170 | 225 | 300 | 715 | 225 |
| 100-375 | 150 | 100 | 370 | 370 | 19 | 415 | 355 | 170 | 260 | 300 | 715 | 260 |
| 125-230 | 200 | 125 | 370 | 370 | 19 | 515 | 400 | 200 | 210 | 366 | 881 | 210 |
| 125-290 | 200 | 125 | 370 | 370 | 19 | 515 | 400 | 200 | 230 | 366 | 881 | 230 |
| 125-365 | 200 | 125 | 370 | 370 | 19 | 515 | 400 | 200 | 260 | 366 | 881 | 260 |
| 125-500 | 200 | 125 | 450 | 450 | 19 | 515 | 400 | 200 | 305 | 366 | 881 | 305 |
| 150-290 | 200 | 150 | 400 | 400 | 19 | 515 | 400 | 200 | 245 | 366 | 881 | 245 |
| 150-360 | 200 | 150 | 400 | 400 | 19 | 515 | 400 | 200 | 265 | 366 | 881 | 265 |
| 150-460 | 200 | 150 | 450 | 450 | 19 | 590 | 400 | 200 | 305 | 399 | 989 | 305 |
| 150-605 | 200 | 150 | 600 | 500 | 19 | 590 | 500 | 300 | 370 | 399 | 989 | 370 |
| 200-320 | 250 | 200 | 450 | 450 | 24,5 | 590 | 500 | 240 | 285 | 399 | 989 | 285 |
| 200-420 | 250 | 200 | 500 | 500 | 24,5 | 590 | 500 | 240 | 310 | 399 | 989 | 310 |
| 200-520 | 250 | 200 | 600 | 500 | 24,5 | 655 | 560 | 300 | 370 | 464 | 1119 | 370 |
| 200-670 | 250 | 200 | 650 | 550 | 30 | 655 | 600 | 350 | 430 | 464 | 1119 | 430 |
| 250-370 | 300 | 250 | 500 | 500 | 24,5 | 655 | 600 | 300 | 320 | 464 | 1119 | 320 |
| 250-480 | 300 | 250 | 550 | 550 | 30 | 730 | 600 | 300 | 355 | 515 | 1245 | 355 |
| 250-600 | 300 | 250 | 650 | 550 | 30 | 730 | 630 | 350 | 420 | 515 | 1245 | 420 |
| 250-800 | 300 | 250 | 800 | 700 | 30 | 810 | 710 | 400 | 520 | 585 | 1395 | 520 |
| 300-300 | 350 | 300 | 550 | 500 | 30 | 655 | 630 | 300 | 360 | 464 | 1119 | 360 |
| 300-435 | 400 | 300 | 650 | 550 | 30 | 730 | 670 | 350 | 365 | 515 | 1245 | 365 |
| 300-560 | 400 | 300 | 700 | 650 | 30 | 810 | 710 | 350 | 430 | 585 | 1395 | 430 |
| 300-700 | 400 | 300 | 750 | 650 | 30 | 810 | 750 | 400 | 485 | 585 | 1395 | 485 |
| 350-360 | 400 | 350 | 650 | 550 | 30 | 730 | 670 | 350 | 410 | 515 | 1245 | 410 |
| 350-430 | 450 | 350 | 750 | 650 | 30 | 810 | 750 | 400 | 465 | 585 | 1395 | 465 |
| 350-510 | 400 | 350 | 750 | 650 | 30 | 810 | 750 | 400 | 420 | 585 | 1395 | 420 |

| Size | Foot dimensions [mm] | | | | | | | | | Shaft | | Weight [kg] | |
|---------|----------------------|----------------|----------------|----------------|----------------|----------------|----------------|----------------|----|----------------|----------------|-------------|------------|
| | b ₁ | d ₂ | m ₁ | m ₂ | n ₁ | n ₂ | n ₃ | n ₄ | s | d ₁ | l ₁ | Pump | Water fill |
| 80-210 | 70 | 19 | 320 | 270 | 205 | 205 | 170 | 170 | 20 | 35 | 80 | 185 | 10 |
| 80-270 | 70 | 19 | 320 | 270 | 205 | 205 | 170 | 170 | 20 | 35 | 80 | 195 | 15 |
| 80-370 | 70 | 19 | 320 | 270 | 205 | 205 | 170 | 170 | 20 | 35 | 80 | 205 | 20 |
| 100-250 | 70 | 19 | 320 | 270 | 235 | 235 | 200 | 200 | 20 | 35 | 80 | 210 | 20 |
| 100-310 | 70 | 19 | 320 | 270 | 235 | 235 | 200 | 200 | 20 | 35 | 80 | 225 | 25 |
| 100-375 | 70 | 19 | 320 | 270 | 235 | 235 | 200 | 200 | 20 | 35 | 80 | 245 | 30 |
| 125-230 | 70 | 19 | 390 | 340 | 260 | 260 | 225 | 225 | 20 | 45 | 100 | 250 | 35 |
| 125-290 | 70 | 19 | 390 | 340 | 260 | 260 | 225 | 225 | 20 | 45 | 100 | 275 | 40 |
| 125-365 | 70 | 19 | 390 | 340 | 260 | 260 | 225 | 225 | 20 | 45 | 100 | 300 | 45 |
| 125-500 | 70 | 19 | 390 | 340 | 315 | 315 | 280 | 280 | 20 | 45 | 100 | 335 | 55 |
| 150-290 | 70 | 19 | 390 | 340 | 260 | 260 | 225 | 225 | 20 | 45 | 100 | 350 | 50 |
| 150-360 | 70 | 19 | 390 | 340 | 260 | 260 | 225 | 225 | 20 | 45 | 100 | 360 | 60 |
| 150-460 | 70 | 19 | 480 | 430 | 315 | 315 | 280 | 280 | 20 | 55 | 125 | 440 | 75 |
| 150-605 | 70 | 19 | 480 | 430 | 385 | 385 | 350 | 350 | 20 | 55 | 125 | 650 | 90 |
| 200-320 | 70 | 19 | 480 | 430 | 315 | 315 | 280 | 280 | 20 | 55 | 125 | 450 | 80 |
| 200-420 | 70 | 19 | 480 | 430 | 315 | 315 | 280 | 280 | 20 | 55 | 125 | 520 | 95 |

| Size | Foot dimensions [mm] | | | | | | | | | Shaft | | Weight [kg] | |
|---------|----------------------|----------------|----------------|----------------|----------------|----------------|----------------|----------------|----|----------------|----------------|-------------|------------|
| | b ₁ | d ₂ | m ₁ | m ₂ | n ₁ | n ₂ | n ₃ | n ₄ | s | d ₁ | l ₁ | Pump | Water fill |
| 200-520 | 70 | 23 | 480 | 400 | 385 | 385 | 350 | 350 | 20 | 65 | 140 | 840 | 115 |
| 200-670 | 100 | 23 | 480 | 400 | 400 | 400 | 350 | 350 | 26 | 65 | 140 | 990 | 140 |
| 250-370 | 100 | 23 | 480 | 400 | 400 | 400 | 350 | 350 | 26 | 65 | 140 | 665 | 125 |
| 250-480 | 100 | 23 | 600 | 520 | 400 | 400 | 350 | 350 | 26 | 75 | 160 | 910 | 145 |
| 250-600 | 100 | 23 | 600 | 520 | 400 | 400 | 350 | 350 | 26 | 75 | 160 | 1215 | 180 |
| 250-800 | 100 | 23 | 600 | 520 | 525 | 525 | 475 | 475 | 26 | 85 | 180 | 1900 | 150 |
| 300-300 | 100 | 23 | 480 | 400 | 400 | 400 | 350 | 350 | 26 | 65 | 140 | 870 | 150 |
| 300-435 | 100 | 23 | 600 | 520 | 400 | 400 | 350 | 350 | 26 | 75 | 160 | 905 | 190 |
| 300-560 | 100 | 23 | 600 | 520 | 525 | 525 | 475 | 475 | 26 | 85 | 180 | 1425 | 225 |
| 300-700 | 100 | 23 | 600 | 520 | 525 | 525 | 475 | 475 | 26 | 85 | 180 | 1690 | 275 |
| 350-360 | 100 | 23 | 600 | 520 | 400 | 400 | 350 | 350 | 26 | 75 | 160 | 1100 | 230 |
| 350-430 | 100 | 23 | 600 | 520 | 525 | 525 | 475 | 475 | 26 | 85 | 180 | 1434 | 240 |
| 350-510 | 100 | 23 | 600 | 520 | 525 | 525 | 475 | 475 | 26 | 85 | 180 | 1395 | 290 |

3E

Omega 80-210 a 80-370



Anchor bolts dimensions: page 31

Permissible dimensional deviations for dimensions without tolerance indication:

- General: ISO 2768 CK
- Shaft centreline heights: DIN 747
- Welded parts: ISO 13920-B/F
- Flange position: ISO 8062-3-DCTG13
- Flanges: to the corresponding standard
- Keyway and key: DIN 6885, sheet 1
- Shaft diameter (coupling): DIN 7155-h₆

Information on installation:

This drawing is not true to scale; it serves as an example only. The dimensions apply to Weg W22 50 Hz motors (up to and including IEC 355M/L frame size). The piping must be connected without transmitting any stresses or strains. The pump must not be used as support for the piping. Pipes must be fastened without transmitting any forces, vibrations or pipe weight to the pump. Observe the limits for forces and moments at the suction nozzle and at the discharge nozzle. The pump must not be connected with unbraced expansion joints.

Grout all areas of the baseplates completely with non-shrinking concrete. Observe the required compressive strength class C25/30 of the concrete in exposure class XC1 as per EN 206-1.

Pump dimensions

| Size | Pump dimensions (mm) | | | | | | | | Weight (kg) | |
|--------|----------------------|----------------|-----|----------------|----------------|----------------|----------------|-----|-------------|------------|
| | a ₁ | a ₂ | f | h ₁ | h ₂ | h ₃ | l ₂ | z | Pump | Water fill |
| 80-210 | 300 | 300 | 415 | 315 | 140 | 168 | 300 | 168 | 185 | 10 |
| 80-270 | 300 | 300 | 415 | 315 | 140 | 190 | 300 | 190 | 195 | 15 |
| 80-370 | 330 | 330 | 415 | 315 | 140 | 225 | 300 | 225 | 205 | 20 |

AE Coupling

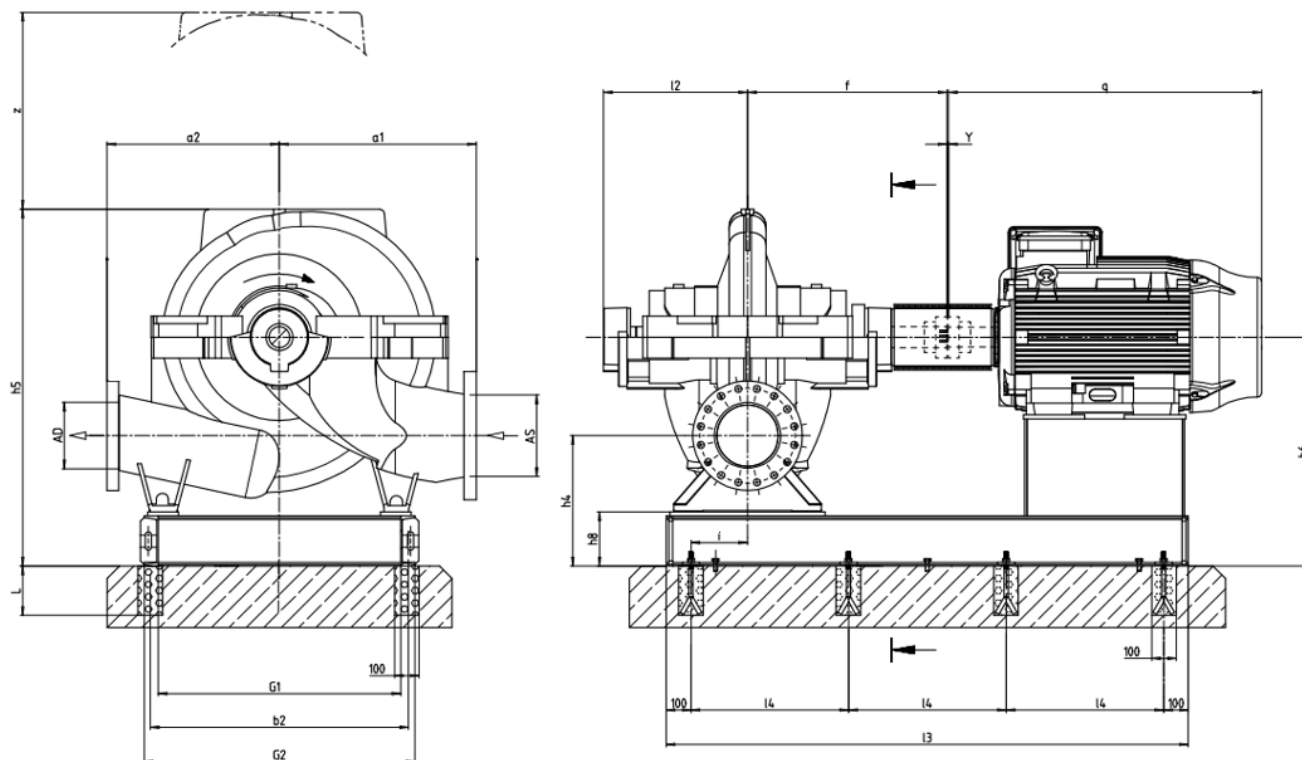
| Size | Power (KW) | Nº of poles | Frame size | Pump and baseplate dimensions (mm) | | | | | | | | | | Anchor bolts qty. | Motor | | Weight (kg) | |
|--------|------------|-------------|------------|------------------------------------|----------------|----------------|----------------|----------------|----------------|----------------|----------------|----------------|------|-------------------|----------------|------------|-------------|--|
| | | | | b ₂ | G ₁ | G ₂ | l ₃ | l ₄ | h ₄ | h ₅ | h ₆ | h ₈ | q | | h ₇ | Base frame | Motor | |
| 80-210 | 2,2 | 4 | 100L | 430 | 380 | 460 | 920 | 720 | 293 | 601 | 433 | 118 | 4 | 376 | 143 | 57 | 32 | |
| | 3 | 4 | L100L | 430 | 380 | 460 | 920 | 720 | 293 | 601 | 433 | 118 | 4 | 414 | 143 | 57 | 38 | |
| | 4 | 4 | 112M | 430 | 380 | 460 | 930 | 730 | 293 | 601 | 433 | 118 | 4 | 394 | 167 | 57 | 44 | |
| | 5,5 | 4 | 132S | 430 | 380 | 460 | 1040 | 840 | 293 | 601 | 433 | 118 | 4 | 452 | 182 | 63 | 71 | |
| | 7,5 | 4 | 132M | 430 | 380 | 460 | 1040 | 840 | 293 | 601 | 433 | 118 | 4 | 489 | 182 | 63 | 74 | |
| | 9,2 | 4 | 132M/L | 430 | 380 | 460 | 1040 | 840 | 293 | 601 | 433 | 118 | 4 | 515 | 182 | 63 | 82 | |
| | 18,5 | 2 | 160L | 430 | 380 | 460 | 1140 | 940 | 293 | 623 | 433 | 118 | 4 | 642 | 215 | 70 | 135 | |
| | 22 | 2 | 180M | 430 | 380 | 460 | 1180 | 980 | 293 | 601 | 433 | 118 | 4 | 664 | 230 | 71 | 170 | |
| | 30 | 2 | 200L | 430 | 380 | 460 | 1220 | 510 | 293 | 601 | 433 | 118 | 6 | 767 | 261 | 71 | 235 | |
| | 37 | 2 | 200L | 430 | 380 | 460 | 1220 | 510 | 293 | 601 | 433 | 118 | 6 | 767 | 261 | 71 | 250 | |
| 45 | 2 | 225S/M | 460 | 410 | 490 | 1270 | 535 | 293 | 601 | 433 | 118 | 6 | 856 | 315 | 71 | 380 | | |
| 80-270 | 5,5 | 4 | 132S | 430 | 380 | 460 | 1040 | 840 | 293 | 623 | 433 | 118 | 4 | 452 | 182 | 63 | 71 | |
| | 7,5 | 4 | 132M | 430 | 380 | 460 | 1040 | 840 | 293 | 623 | 433 | 118 | 4 | 489 | 182 | 63 | 74 | |
| | 9,2 | 4 | 132M/L | 430 | 380 | 460 | 1040 | 840 | 293 | 623 | 433 | 118 | 4 | 515 | 182 | 63 | 82 | |
| | 11 | 4 | 160M | 430 | 380 | 460 | 1140 | 940 | 293 | 623 | 433 | 118 | 4 | 598 | 215 | 70 | 113 | |
| | 15 | 4 | 160L | 430 | 380 | 460 | 1140 | 940 | 293 | 623 | 433 | 118 | 4 | 642 | 215 | 70 | 140 | |
| | 30 | 2 | 200L | 430 | 360 | 460 | 1220 | 510 | 293 | 623 | 433 | 118 | 6 | 767 | 261 | 71 | 235 | |
| | 37 | 2 | 200L | 430 | 360 | 460 | 1220 | 510 | 293 | 623 | 433 | 118 | 6 | 767 | 261 | 71 | 250 | |
| | 45 | 2 | 225S/M | 460 | 410 | 490 | 1270 | 535 | 293 | 623 | 433 | 118 | 6 | 856 | 315 | 71 | 380 | |
| | 55 | 2 | 250S/M | 530 | 480 | 560 | 1360 | 580 | 293 | 623 | 433 | 118 | 6 | 965 | 337 | 80 | 460 | |
| | 75 | 2 | 280S/M | 580 | 530 | 610 | 1440 | 620 | 293 | 623 | 433 | 118 | 6 | 1071 | 410 | 83 | 680 | |
| 90 | 2 | 280S/M | 580 | 530 | 610 | 1440 | 620 | 293 | 623 | 433 | 118 | 6 | 1071 | 410 | 83 | 710 | | |
| 80-370 | 3 | 6 | 132S | 430 | 380 | 460 | 1040 | 840 | 293 | 658 | 433 | 118 | 4 | 452 | 182 | 63 | 65 | |
| | 4 | 6 | 132M | 430 | 380 | 460 | 1040 | 840 | 293 | 658 | 433 | 118 | 4 | 489 | 182 | 63 | 70 | |
| | 5,5 | 6 | 132M/L | 430 | 380 | 460 | 1040 | 840 | 293 | 658 | 433 | 118 | 4 | 515 | 182 | 63 | 78 | |
| | 7,5 | 6 | 160M | 430 | 380 | 460 | 1140 | 940 | 293 | 658 | 433 | 118 | 4 | 598 | 215 | 70 | 118 | |
| | 7,5 | 4 | 132M | 430 | 380 | 460 | 1040 | 840 | 293 | 658 | 433 | 118 | 4 | 489 | 182 | 63 | 74 | |
| | 9,2 | 4 | 132M/L | 430 | 380 | 460 | 1040 | 840 | 293 | 658 | 433 | 118 | 4 | 515 | 182 | 63 | 82 | |
| | 11 | 4 | 160M | 430 | 380 | 460 | 1140 | 940 | 293 | 658 | 433 | 118 | 4 | 598 | 215 | 70 | 113 | |
| | 15 | 4 | 160L | 430 | 380 | 460 | 1140 | 940 | 293 | 658 | 433 | 118 | 4 | 642 | 215 | 70 | 140 | |
| | 18,5 | 4 | 180M | 430 | 380 | 460 | 1180 | 980 | 293 | 658 | 433 | 118 | 4 | 664 | 230 | 71 | 188 | |
| 22 | 4 | 180L | 430 | 380 | 460 | 1180 | 980 | 293 | 658 | 433 | 118 | 4 | 702 | 230 | 71 | 185 | | |

AW Coupling

| Size | Power (KW) | N° of poles | Frame size | Pump and baseplate dimensions (mm) | | | | | | | | | Anchor bolts qty. | Motor | | Weight (kg) | |
|--------|------------|-------------|------------|------------------------------------|----------------|----------------|----------------|----------------|----------------|----------------|----------------|----------------|-------------------|-------|----------------|-------------|-------|
| | | | | b ₂ | G ₁ | G ₂ | I ₃ | I ₄ | h ₄ | h ₅ | h ₆ | h ₈ | | q | h ₇ | Base frame | Motor |
| 80-210 | 2,2 | 4 | 100L | 430 | 380 | 460 | 945 | 745 | 293 | 601 | 433 | 118 | 4 | 376 | 143 | 57 | 32 |
| | 3 | 4 | L100L | 430 | 380 | 460 | 945 | 745 | 293 | 601 | 433 | 118 | 4 | 414 | 143 | 57 | 38 |
| | 4 | 4 | 112M | 430 | 380 | 460 | 955 | 755 | 293 | 601 | 433 | 118 | 4 | 394 | 167 | 58 | 44 |
| | 5,5 | 4 | 132S | 430 | 380 | 460 | 1065 | 865 | 293 | 601 | 433 | 118 | 4 | 452 | 182 | 63 | 71 |
| | 7,5 | 4 | 132M | 430 | 380 | 460 | 1065 | 865 | 293 | 601 | 433 | 118 | 4 | 489 | 182 | 63 | 74 |
| | 9,2 | 4 | 132M/L | 430 | 380 | 460 | 1065 | 865 | 293 | 601 | 433 | 118 | 4 | 515 | 182 | 63 | 82 |
| | 18,5 | 2 | 160L | 430 | 380 | 460 | 1175 | 975 | 293 | 623 | 433 | 118 | 4 | 642 | 215 | 70 | 135 |
| | 22 | 2 | 180M | 430 | 380 | 460 | 1230 | 515 | 293 | 601 | 433 | 118 | 6 | 664 | 230 | 72 | 170 |
| | 30 | 2 | 200L | 430 | 380 | 460 | 1280 | 540 | 293 | 601 | 433 | 118 | 6 | 767 | 261 | 72 | 235 |
| | 37 | 2 | 200L | 430 | 380 | 460 | 1280 | 540 | 293 | 601 | 433 | 118 | 6 | 767 | 261 | 72 | 250 |
| | 45 | 2 | 225S/M | 460 | 410 | 490 | 1330 | 565 | 293 | 601 | 433 | 118 | 6 | 856 | 315 | 72 | 380 |
| 80-270 | 5,5 | 4 | 132S | 430 | 380 | 460 | 1065 | 865 | 293 | 623 | 433 | 118 | 4 | 452 | 182 | 63 | 71 |
| | 7,5 | 4 | 132M | 430 | 380 | 460 | 1065 | 865 | 293 | 623 | 433 | 118 | 4 | 489 | 182 | 63 | 74 |
| | 9,2 | 4 | 132M/L | 430 | 380 | 460 | 1065 | 865 | 293 | 623 | 433 | 118 | 4 | 515 | 182 | 63 | 82 |
| | 11 | 4 | 160M | 430 | 380 | 460 | 1175 | 975 | 293 | 623 | 433 | 118 | 4 | 598 | 215 | 70 | 113 |
| | 15 | 4 | 160L | 430 | 380 | 460 | 1175 | 975 | 293 | 623 | 433 | 118 | 4 | 642 | 215 | 70 | 140 |
| | 30 | 2 | 200L | 430 | 380 | 460 | 1280 | 540 | 293 | 623 | 433 | 118 | 6 | 767 | 261 | 72 | 235 |
| | 37 | 2 | 200L | 430 | 380 | 460 | 1280 | 540 | 293 | 623 | 433 | 118 | 6 | 767 | 261 | 72 | 250 |
| | 45 | 2 | 225S/M | 460 | 410 | 490 | 1330 | 565 | 293 | 623 | 433 | 118 | 6 | 856 | 315 | 72 | 380 |
| | 55 | 2 | 250S/M | 530 | 480 | 560 | 1330 | 610 | 293 | 623 | 433 | 118 | 6 | 965 | 337 | 81 | 460 |
| | 75 | 2 | 280S/M | 580 | 530 | 610 | 1500 | 650 | 293 | 623 | 433 | 118 | 6 | 1071 | 410 | 84 | 680 |
| | 90 | 2 | 280S/M | 580 | 530 | 610 | 1500 | 650 | 293 | 623 | 433 | 118 | 6 | 1071 | 410 | 84 | 710 |
| 80-370 | 3 | 6 | 132S | 430 | 380 | 460 | 1065 | 865 | 293 | 658 | 433 | 118 | 4 | 452 | 182 | 63 | 65 |
| | 4 | 6 | 132M | 430 | 380 | 460 | 1065 | 865 | 293 | 658 | 433 | 118 | 4 | 489 | 182 | 63 | 70 |
| | 5,5 | 6 | 132M/L | 430 | 380 | 460 | 1065 | 865 | 293 | 658 | 433 | 118 | 4 | 515 | 182 | 63 | 78 |
| | 7,5 | 6 | 160M | 430 | 380 | 460 | 1175 | 975 | 293 | 658 | 433 | 118 | 4 | 598 | 215 | 70 | 118 |
| | 7,5 | 4 | 132M | 430 | 380 | 460 | 1065 | 865 | 293 | 658 | 433 | 118 | 4 | 489 | 182 | 63 | 74 |
| | 9,2 | 4 | 132M/L | 430 | 380 | 460 | 1065 | 865 | 293 | 658 | 433 | 118 | 4 | 515 | 182 | 63 | 82 |
| | 11 | 4 | 160M | 430 | 380 | 460 | 1175 | 975 | 293 | 658 | 433 | 118 | 4 | 598 | 215 | 70 | 113 |
| | 15 | 4 | 160L | 430 | 380 | 460 | 1175 | 975 | 293 | 658 | 433 | 118 | 4 | 642 | 215 | 70 | 140 |
| | 18,5 | 4 | 180M | 430 | 380 | 460 | 1230 | 515 | 293 | 658 | 433 | 118 | 6 | 664 | 230 | 72 | 188 |
| | 22 | 4 | 180L | 430 | 380 | 460 | 1230 | 515 | 293 | 658 | 433 | 118 | 6 | 702 | 230 | 72 | 185 |

3E

Omega 100-250 a 100-375



Anchor bolts dimensions: page 31

Permissible dimensional deviations for dimensions without tolerance indication:

- General: ISO 2768 CK
- Shaft centreline heights: DIN 747
- Welded parts: ISO 13920-B/F
- Flange position: ISO 8062-3-DCTG13
- Flanges: to the corresponding standard
- Keyway and key: DIN 6885, sheet 1
- Shaft diameter (coupling): DIN 7155-h₆

Information on installation:

This drawing is not true to scale; it serves as an example only. The dimensions apply to Weg W22 50 Hz motors (up to and including IEC 355M/L frame size). The piping must be connected without transmitting any stresses or strains. The pump must not be used as support for the piping. Pipes must be fastened without transmitting any forces, vibrations or pipe weight to the pump. Observe the limits for forces and moments at the suction nozzle and at the discharge nozzle. The pump must not be connected with unbraced expansion joints.

Grout all areas of the baseplates completely with non-shrinking concrete. Observe the required compressive strength class C25/30 of the concrete in exposure class XC1 as per EN 206-1.

Pump dimensions

| Size | Pump dimensions (mm) | | | | | | | | Weight (kg) | |
|---------|----------------------|----------------|-----|----------------|----------------|----------------|----------------|-----|-------------|------------|
| | a ₁ | a ₂ | f | h ₁ | h ₂ | h ₃ | l ₂ | z | Pump | Water fill |
| 100-250 | 330 | 330 | 415 | 355 | 170 | 195 | 300 | 195 | 210 | 20 |
| 100-310 | 330 | 330 | 415 | 355 | 170 | 225 | 300 | 225 | 225 | 25 |
| 100-375 | 370 | 370 | 415 | 355 | 170 | 260 | 300 | 260 | 245 | 30 |

AE Coupling

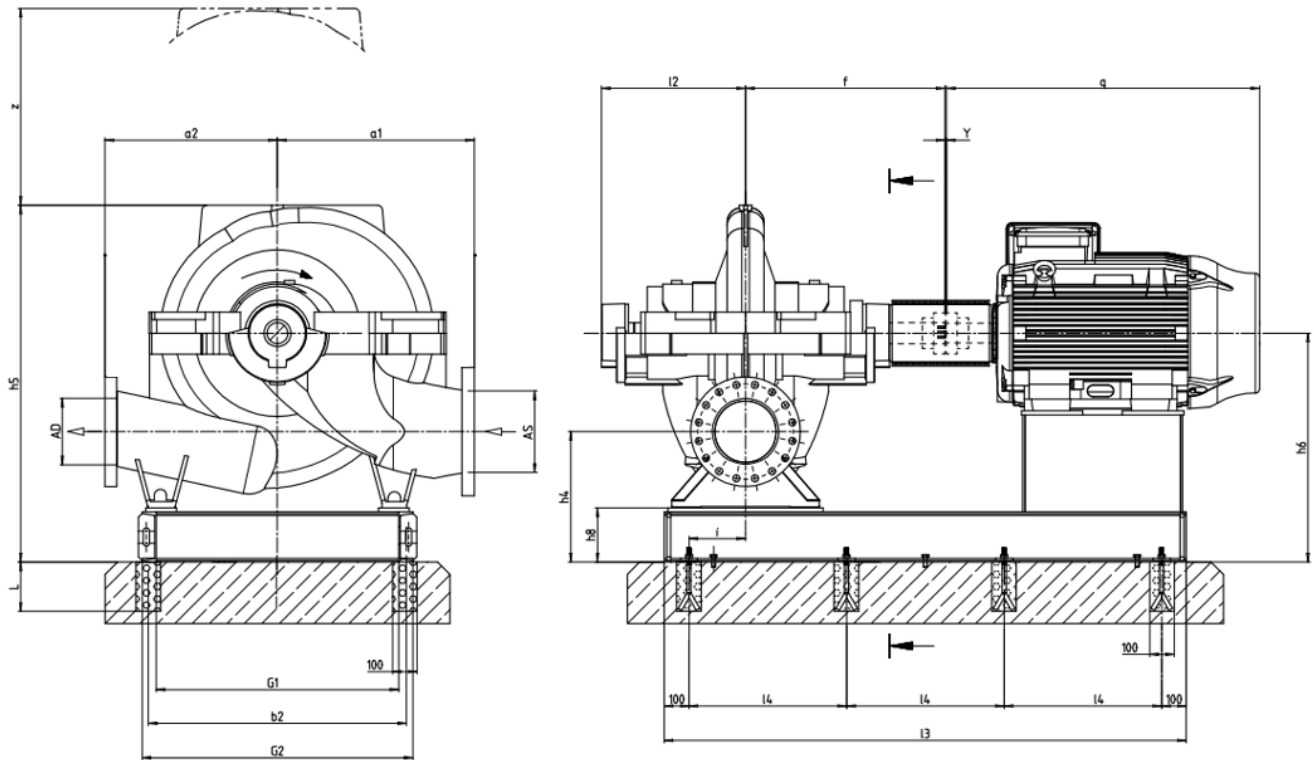
| Size | Power (KW) | Nº of poles | Frame size | Pump and baseplate dimensions (mm) | | | | | | | | | | Anchor bolts qty. | Motor | | Weight (kg) | |
|---------|------------|-------------|------------|------------------------------------|----------------|----------------|----------------|----------------|----------------|----------------|----------------|----------------|------|----------------------|----------------|---------------|-------------|--|
| | | | | b ₂ | G ₁ | G ₂ | l ₃ | l ₄ | h ₄ | h ₅ | h ₆ | h ₈ | q | | h ₇ | Base frame | Motor | |
| 100-250 | 5,5 | 4 | 132S | 490 | 440 | 520 | 1040 | 840 | 303 | 668 | 473 | 118 | 4 | 452 | 182 | 68 | 71 | |
| | 7,5 | 4 | 132M | 490 | 440 | 520 | 1040 | 840 | 303 | 668 | 473 | 118 | 4 | 489 | 182 | 68 | 74 | |
| | 9,2 | 4 | 132M/L | 490 | 440 | 520 | 1040 | 840 | 303 | 668 | 473 | 118 | 4 | 515 | 182 | 68 | 82 | |
| | 11 | 4 | 160L | 490 | 440 | 520 | 1140 | 940 | 303 | 668 | 473 | 118 | 4 | 642 | 215 | 78 | 113 | |
| | 15 | 4 | 160L | 490 | 440 | 520 | 1140 | 940 | 303 | 668 | 473 | 118 | 4 | 642 | 215 | 78 | 140 | |
| | 37 | 2 | 200L | 490 | 440 | 520 | 1220 | 510 | 303 | 668 | 473 | 118 | 6 | 767 | 261 | 79 | 250 | |
| | 45 | 2 | 225S/M | 490 | 440 | 520 | 1300 | 550 | 303 | 668 | 473 | 118 | 6 | 856 | 315 | 81 | 380 | |
| | 55 | 2 | 250S/M | 530 | 480 | 560 | 1360 | 580 | 303 | 668 | 473 | 118 | 6 | 965 | 337 | 85 | 460 | |
| | 75 | 2 | 280S/M | 580 | 530 | 610 | 1440 | 620 | 303 | 668 | 473 | 118 | 6 | 1071 | 410 | 88 | 680 | |
| | 90 | 2 | 280S/M | 580 | 510 | 610 | 1440 | 620 | 303 | 668 | 473 | 118 | 6 | 1071 | 410 | 88 | 710 | |
| 100-310 | 9,2 | 4 | 132M/L | 490 | 440 | 520 | 1040 | 840 | 303 | 698 | 473 | 118 | 4 | 515 | 182 | 68 | 82 | |
| | 11 | 4 | 160M | 490 | 440 | 520 | 1140 | 940 | 303 | 698 | 473 | 118 | 4 | 598 | 215 | 78 | 113 | |
| | 15 | 4 | 160L | 490 | 440 | 520 | 1140 | 940 | 303 | 698 | 473 | 118 | 4 | 642 | 215 | 78 | 140 | |
| | 18,5 | 4 | 180M | 490 | 440 | 520 | 1180 | 980 | 303 | 698 | 473 | 118 | 4 | 664 | 230 | 80 | 188 | |
| | 22 | 4 | 180L | 490 | 440 | 520 | 1180 | 980 | 303 | 698 | 473 | 118 | 4 | 702 | 230 | 80 | 185 | |
| | 30 | 4 | 200L | 490 | 440 | 520 | 1220 | 510 | 303 | 698 | 473 | 118 | 6 | 767 | 261 | 79 | 228 | |
| | 75 | 2 | 280S/M | 580 | 530 | 610 | 1440 | 620 | 303 | 698 | 473 | 118 | 6 | 1071 | 410 | 88 | 680 | |
| | 90 | 2 | 280S/M | 580 | 530 | 610 | 1440 | 620 | 303 | 698 | 473 | 118 | 6 | 1071 | 410 | 88 | 710 | |
| | 110 | 2 | 315S/M | 640 | 580 | 680 | 1550 | 675 | 354 | 749 | 524 | 169 | 6 | 1244 | 436 | 118 | 900 | |
| | 132 | 2 | 315S/M | 640 | 580 | 680 | 1550 | 675 | 354 | 749 | 524 | 169 | 6 | 1244 | 436 | 118 | 950 | |
| 150 | 2 | 315S/M | 640 | 580 | 680 | 1550 | 675 | 354 | 749 | 524 | 169 | 6 | 1244 | 436 | 118 | 1050 | | |
| 100-375 | 5,5 | 6 | 132M/L | 490 | 440 | 520 | 1040 | 840 | 303 | 733 | 473 | 118 | 4 | 515 | 182 | 68 | 78 | |
| | 7,5 | 6 | 160M | 490 | 440 | 520 | 1140 | 940 | 303 | 733 | 473 | 118 | 4 | 598 | 215 | 78 | 118 | |
| | 9,2 | 6 | 160L | 490 | 440 | 520 | 1140 | 940 | 303 | 733 | 473 | 118 | 4 | 642 | 215 | 78 | 135 | |
| | 11 | 6 | 160L | 490 | 440 | 520 | 1140 | 940 | 303 | 733 | 473 | 118 | 4 | 642 | 215 | 78 | 140 | |
| | 15 | 6 | 180L | 490 | 440 | 520 | 1180 | 980 | 303 | 733 | 473 | 118 | 4 | 702 | 230 | 80 | 185 | |
| | 18,5 | 4 | 180M | 490 | 440 | 520 | 1180 | 980 | 303 | 733 | 473 | 118 | 4 | 664 | 230 | 80 | 188 | |
| | 22 | 4 | 180L | 490 | 440 | 520 | 1180 | 980 | 303 | 733 | 473 | 118 | 4 | 702 | 230 | 80 | 185 | |
| | 30 | 4 | 200L | 490 | 440 | 520 | 1220 | 510 | 303 | 733 | 473 | 118 | 6 | 767 | 261 | 79 | 228 | |
| | 37 | 4 | 225S/M | 490 | 440 | 520 | 1300 | 550 | 303 | 733 | 473 | 118 | 6 | 886 | 315 | 81 | 365 | |
| | 45 | 4 | 225S/M | 490 | 440 | 520 | 1300 | 550 | 303 | 733 | 473 | 118 | 6 | 886 | 315 | 81 | 400 | |

AW Coupling

| Size | Power (KW) | N° of poles | Frame size | Pump and baseplate dimensions (mm) | | | | | | | | | Anchor bolts qty. | Motor | | Weight (kg) | |
|---------|------------|-------------|------------|------------------------------------|----------------|----------------|----------------|----------------|----------------|----------------|----------------|----------------|----------------------|-------|----------------|---------------|-------|
| | | | | b ₂ | G ₁ | G ₂ | I ₃ | I ₄ | h ₄ | h ₅ | h ₆ | h ₈ | | q | h ₇ | Base frame | Motor |
| 100-250 | 5,5 | 4 | 132S | 490 | 440 | 520 | 1065 | 865 | 303 | 668 | 473 | 118 | 4 | 452 | 182 | 68 | 71 |
| | 7,5 | 4 | 132M | 490 | 440 | 520 | 1065 | 865 | 303 | 668 | 473 | 118 | 4 | 489 | 182 | 68 | 74 |
| | 9,2 | 4 | 132M/L | 490 | 440 | 520 | 1065 | 865 | 303 | 668 | 473 | 118 | 4 | 515 | 182 | 68 | 82 |
| | 11 | 4 | 160L | 490 | 440 | 520 | 1175 | 975 | 303 | 668 | 473 | 118 | 4 | 642 | 215 | 79 | 113 |
| | 15 | 4 | 160L | 490 | 440 | 520 | 1175 | 975 | 303 | 668 | 473 | 118 | 4 | 642 | 215 | 79 | 140 |
| | 37 | 2 | 200L | 490 | 440 | 520 | 1280 | 540 | 303 | 668 | 473 | 118 | 6 | 767 | 261 | 80 | 250 |
| | 45 | 2 | 225S/M | 490 | 440 | 520 | 1360 | 580 | 303 | 668 | 473 | 118 | 6 | 856 | 315 | 82 | 380 |
| | 55 | 2 | 250S/M | 530 | 480 | 560 | 1420 | 610 | 303 | 668 | 473 | 118 | 6 | 965 | 337 | 86 | 460 |
| | 75 | 2 | 280S/M | 580 | 530 | 610 | 1500 | 650 | 303 | 668 | 473 | 118 | 6 | 1071 | 410 | 89 | 680 |
| | 90 | 2 | 280S/M | 580 | 530 | 610 | 1500 | 650 | 303 | 668 | 473 | 118 | 6 | 1071 | 410 | 89 | 710 |
| 100-310 | 9,2 | 4 | 132M/L | 490 | 440 | 520 | 1065 | 865 | 303 | 698 | 473 | 118 | 4 | 515 | 182 | 68 | 82 |
| | 11 | 4 | 160M | 490 | 440 | 520 | 1175 | 975 | 303 | 698 | 473 | 118 | 4 | 598 | 215 | 79 | 113 |
| | 15 | 4 | 160L | 490 | 440 | 520 | 1175 | 975 | 303 | 698 | 473 | 118 | 4 | 642 | 215 | 79 | 140 |
| | 18,5 | 4 | 180M | 490 | 440 | 520 | 1230 | 515 | 303 | 698 | 473 | 118 | 6 | 664 | 230 | 81 | 188 |
| | 22 | 4 | 180L | 490 | 440 | 520 | 1230 | 515 | 303 | 698 | 473 | 118 | 6 | 702 | 230 | 81 | 185 |
| | 30 | 4 | 200L | 490 | 440 | 520 | 1280 | 540 | 303 | 698 | 473 | 118 | 6 | 767 | 261 | 80 | 228 |
| | 75 | 2 | 280S/M | 580 | 530 | 610 | 1500 | 650 | 303 | 698 | 473 | 118 | 6 | 1071 | 410 | 89 | 680 |
| | 90 | 2 | 280S/M | 580 | 530 | 610 | 1500 | 650 | 303 | 698 | 473 | 118 | 6 | 1071 | 410 | 89 | 710 |
| | 110 | 2 | 315S/M | 640 | 580 | 680 | 1610 | 705 | 354 | 749 | 524 | 169 | 6 | 1244 | 436 | 120 | 900 |
| | 132 | 2 | 315S/M | 640 | 580 | 680 | 1610 | 705 | 354 | 749 | 524 | 169 | 6 | 1244 | 436 | 120 | 950 |
| 150 | 2 | 315S/M | 640 | 580 | 680 | 1610 | 705 | 354 | 749 | 524 | 169 | 6 | 1244 | 436 | 120 | 1050 | |
| 100-375 | 5,5 | 6 | 132M/L | 490 | 440 | 520 | 1065 | 865 | 303 | 733 | 473 | 118 | 4 | 515 | 182 | 68 | 78 |
| | 7,5 | 6 | 160M | 490 | 440 | 520 | 1175 | 975 | 303 | 733 | 473 | 118 | 4 | 598 | 215 | 79 | 118 |
| | 9,2 | 6 | 160L | 490 | 440 | 520 | 1175 | 975 | 303 | 733 | 473 | 118 | 4 | 642 | 215 | 79 | 135 |
| | 11 | 6 | 160L | 490 | 440 | 520 | 1175 | 975 | 303 | 733 | 473 | 118 | 4 | 642 | 215 | 79 | 140 |
| | 15 | 6 | 180L | 490 | 440 | 520 | 1230 | 515 | 303 | 733 | 473 | 118 | 6 | 702 | 230 | 81 | 185 |
| | 18,5 | 4 | 180M | 490 | 440 | 520 | 1230 | 515 | 303 | 733 | 473 | 118 | 6 | 664 | 230 | 81 | 188 |
| | 22 | 4 | 180L | 490 | 440 | 520 | 1230 | 515 | 303 | 733 | 473 | 118 | 6 | 702 | 230 | 81 | 185 |
| | 30 | 4 | 200L | 490 | 440 | 520 | 1280 | 540 | 303 | 733 | 473 | 118 | 6 | 767 | 261 | 80 | 228 |
| | 37 | 4 | 225S/M | 490 | 440 | 520 | 1360 | 580 | 303 | 733 | 473 | 118 | 6 | 886 | 315 | 82 | 365 |
| | 45 | 4 | 225S/M | 490 | 440 | 520 | 1360 | 580 | 303 | 733 | 473 | 118 | 6 | 886 | 315 | 82 | 400 |

3E

Omega 125-230 a 125-365



Anchor bolts dimensions: page 31

Permissible dimensional deviations for dimensions without tolerance indication:

- General: ISO 2768 CK
- Shaft centreline heights: DIN 747
- Welded parts: ISO 13920-B/F
- Flange position: ISO 8062-3-DCTG13
- Flanges: to the corresponding standard
- Keyway and key: DIN 6885, sheet 1
- Shaft diameter (coupling): DIN 7155-h₆

Information on installation:

This drawing is not true to scale; it serves as an example only. The dimensions apply to Weg W22 50 Hz motors (up to and including IEC 355M/L frame size). The piping must be connected without transmitting any stresses or strains. The pump must not be used as support for the piping. Pipes must be fastened without transmitting any forces, vibrations or pipe weight to the pump. Observe the limits for forces and moments at the suction nozzle and at the discharge nozzle. The pump must not be connected with unbraced expansion joints.

Grout all areas of the baseplates completely with non-shrinking concrete. Observe the required compressive strength class C25/30 of the concrete in exposure class XC1 as per EN 206-1.

Pump dimensions

| Size | Pump dimensions (mm) | | | | | | | | Weight (kg) | |
|---------|----------------------|----------------|-----|----------------|----------------|----------------|----------------|-----|-------------|------------|
| | a ₁ | a ₂ | f | h ₁ | h ₂ | h ₃ | l ₂ | z | Pump | Water fill |
| 125-230 | 370 | 370 | 515 | 400 | 200 | 210 | 366 | 210 | 250 | 35 |
| 125-290 | 370 | 370 | 515 | 400 | 200 | 230 | 366 | 230 | 275 | 40 |
| 125-365 | 370 | 370 | 515 | 400 | 200 | 260 | 366 | 260 | 300 | 45 |

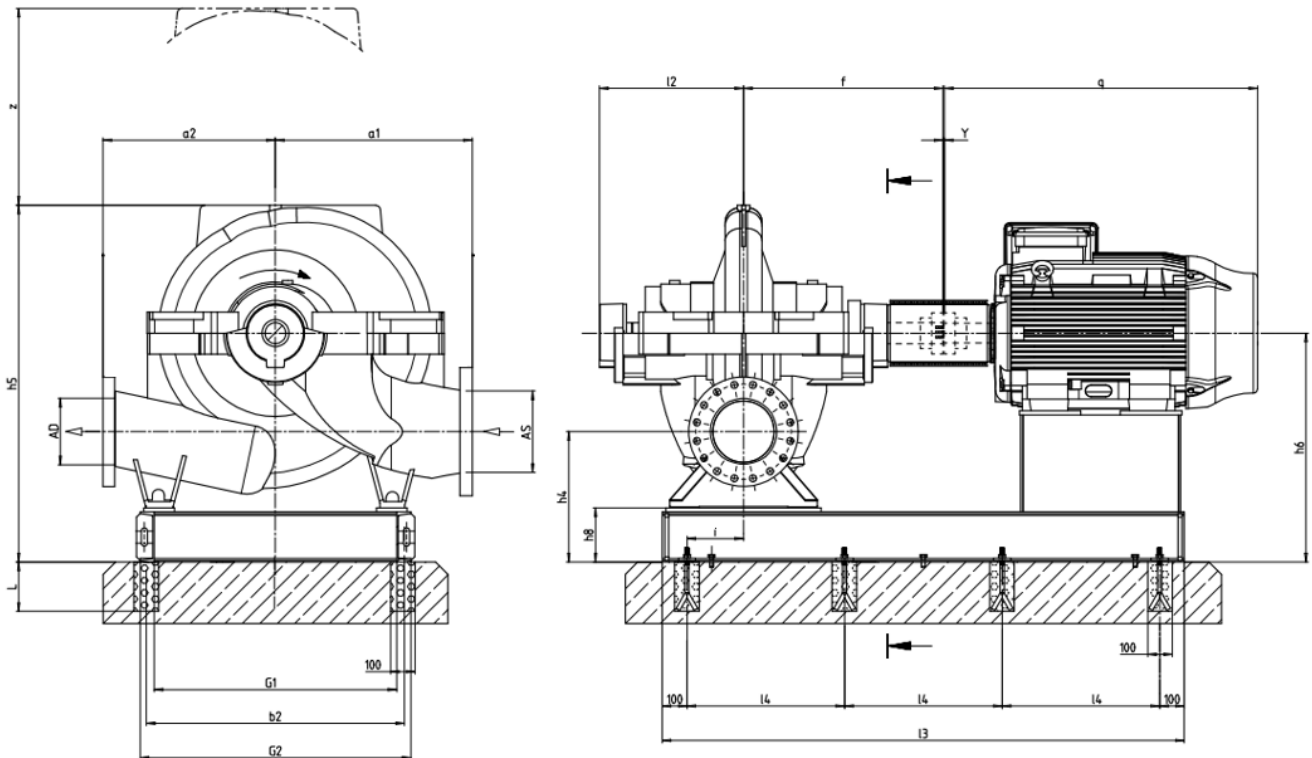
AE Coupling

| Size | Power (KW) | Nº of poles | Frame size | Pump and baseplate dimensions (mm) | | | | | | | | | Anchor bolts qty. | Motor | | Weight (kg) | |
|---------|------------|-------------|------------|------------------------------------|----------------|----------------|----------------|----------------|----------------|----------------|----------------|----------------|-------------------|-------|----------------|-------------|-------|
| | | | | b ₂ | G ₁ | G ₂ | l ₃ | l ₄ | h ₄ | h ₅ | h ₆ | h ₈ | | q | h ₇ | Base frame | Motor |
| 125-230 | 7,5 | 4 | 132M | 540 | 490 | 570 | 1170 | 970 | 318 | 728 | 518 | 118 | 4 | 489 | 182 | 77 | 74 |
| | 9,2 | 4 | 132M/L | 540 | 490 | 570 | 1170 | 970 | 318 | 728 | 518 | 118 | 4 | 515 | 182 | 77 | 82 |
| | 11 | 4 | 160M | 540 | 490 | 570 | 1270 | 535 | 318 | 728 | 518 | 118 | 6 | 598 | 215 | 91 | 113 |
| | 15 | 4 | 160L | 540 | 490 | 570 | 1270 | 535 | 318 | 728 | 518 | 118 | 6 | 642 | 215 | 91 | 140 |
| | 18,5 | 4 | 180M | 540 | 490 | 570 | 1320 | 560 | 318 | 728 | 518 | 118 | 6 | 664 | 230 | 91 | 188 |
| | 75 | 2 | 280S/M | 580 | 530 | 610 | 1570 | 685 | 318 | 728 | 518 | 118 | 6 | 1071 | 410 | 98 | 680 |
| | 90 | 2 | 280S/M | 580 | 530 | 610 | 1570 | 685 | 318 | 728 | 518 | 118 | 6 | 1071 | 410 | 98 | 710 |
| | 110 | 2 | 315S/M | 640 | 580 | 680 | 1700 | 750 | 369 | 779 | 569 | 169 | 6 | 1244 | 436 | 132 | 900 |
| 125-290 | 15 | 4 | 160L | 540 | 490 | 570 | 1270 | 535 | 318 | 748 | 518 | 118 | 6 | 642 | 215 | 91 | 140 |
| | 18,5 | 4 | 180M | 540 | 490 | 570 | 1320 | 560 | 318 | 748 | 518 | 118 | 6 | 664 | 230 | 91 | 188 |
| | 22 | 4 | 180L | 540 | 490 | 570 | 1320 | 560 | 318 | 748 | 518 | 118 | 6 | 702 | 230 | 91 | 185 |
| | 30 | 4 | 200L | 540 | 490 | 570 | 1360 | 580 | 318 | 748 | 518 | 118 | 6 | 767 | 261 | 91 | 228 |
| | 90 | 2 | 280S/M | 580 | 530 | 610 | 1570 | 685 | 318 | 748 | 518 | 118 | 6 | 1071 | 410 | 98 | 710 |
| | 110 | 2 | 315S/M | 640 | 580 | 680 | 1700 | 750 | 369 | 799 | 569 | 169 | 6 | 1244 | 436 | 132 | 900 |
| 125-365 | 7,5 | 6 | 160M | 540 | 490 | 570 | 1270 | 535 | 318 | 778 | 518 | 118 | 6 | 598 | 215 | 91 | 118 |
| | 9,2 | 6 | 160L | 540 | 490 | 570 | 1270 | 535 | 318 | 778 | 518 | 118 | 6 | 642 | 215 | 91 | 135 |
| | 11 | 6 | 160L | 540 | 490 | 570 | 1270 | 535 | 318 | 778 | 518 | 118 | 6 | 642 | 215 | 91 | 140 |
| | 15 | 6 | 180L | 540 | 490 | 570 | 1320 | 560 | 318 | 778 | 518 | 118 | 6 | 702 | 230 | 91 | 185 |
| | 18,5 | 6 | 200L | 540 | 490 | 570 | 1360 | 580 | 318 | 778 | 518 | 118 | 6 | 767 | 261 | 91 | 215 |
| | 22 | 6 | 200L | 540 | 490 | 570 | 1360 | 580 | 318 | 778 | 518 | 118 | 6 | 767 | 261 | 91 | 225 |
| | 30 | 6 | 225S/M | 540 | 490 | 570 | 1420 | 610 | 318 | 778 | 518 | 118 | 6 | 886 | 315 | 91 | 380 |
| | 18,5 | 4 | 180M | 540 | 490 | 570 | 1320 | 560 | 318 | 778 | 518 | 118 | 6 | 664 | 230 | 91 | 188 |
| | 22 | 4 | 180L | 540 | 490 | 570 | 1320 | 560 | 318 | 778 | 518 | 118 | 6 | 702 | 230 | 91 | 185 |
| | 30 | 4 | 200L | 540 | 490 | 570 | 1360 | 580 | 318 | 778 | 518 | 118 | 6 | 767 | 261 | 91 | 228 |
| | 37 | 4 | 225S/M | 540 | 490 | 570 | 1420 | 610 | 318 | 778 | 518 | 118 | 6 | 886 | 315 | 91 | 365 |
| | 45 | 4 | 225S/M | 540 | 490 | 570 | 1420 | 610 | 318 | 778 | 518 | 118 | 6 | 886 | 315 | 91 | 400 |
| | 55 | 4 | 250S/M | 540 | 490 | 570 | 1500 | 650 | 318 | 778 | 518 | 118 | 6 | 965 | 337 | 97 | 500 |

AW Coupling

| Size | Power (KW) | Nº of poles | Frame size | Pump and baseplate dimensions (mm) | | | | | | | | | Anchor bolts qty. | Motor | | Weight (kg) | |
|---------|------------|-------------|------------|------------------------------------|----------------|----------------|----------------|----------------|----------------|----------------|----------------|----------------|-------------------|-------|----------------|-------------|-------|
| | | | | b ₂ | G ₁ | G ₂ | I ₃ | I ₄ | h ₄ | h ₅ | h ₆ | h ₈ | | q | h ₇ | Base frame | Motor |
| 125-230 | 7,5 | 4 | 132M | 540 | 490 | 570 | 1220 | 510 | 318 | 728 | 518 | 118 | 6 | 489 | 182 | 78 | 74 |
| | 9,2 | 4 | 132M/L | 540 | 490 | 570 | 1220 | 510 | 318 | 728 | 518 | 118 | 6 | 515 | 182 | 78 | 82 |
| | 11 | 4 | 160M | 540 | 490 | 570 | 1310 | 555 | 318 | 728 | 518 | 118 | 6 | 598 | 215 | 92 | 113 |
| | 15 | 4 | 160L | 540 | 490 | 570 | 1310 | 555 | 318 | 728 | 518 | 118 | 6 | 642 | 215 | 92 | 140 |
| | 18,5 | 4 | 180M | 540 | 490 | 570 | 1370 | 585 | 318 | 728 | 518 | 118 | 6 | 664 | 230 | 92 | 188 |
| | 75 | 2 | 280S/M | 580 | 530 | 610 | 1660 | 730 | 318 | 728 | 518 | 118 | 6 | 1071 | 410 | 100 | 680 |
| | 90 | 2 | 280S/M | 580 | 530 | 610 | 1660 | 730 | 318 | 728 | 518 | 118 | 6 | 1071 | 410 | 100 | 710 |
| | 110 | 2 | 315S/M | 640 | 580 | 680 | 1790 | 795 | 369 | 779 | 569 | 169 | 6 | 1244 | 436 | 135 | 900 |
| 125-290 | 15 | 4 | 160L | 540 | 490 | 570 | 1310 | 555 | 318 | 748 | 518 | 118 | 6 | 642 | 215 | 92 | 140 |
| | 18,5 | 4 | 180M | 540 | 490 | 570 | 1370 | 585 | 318 | 748 | 518 | 118 | 6 | 664 | 230 | 92 | 188 |
| | 22 | 4 | 180L | 540 | 490 | 570 | 1370 | 585 | 318 | 748 | 518 | 118 | 6 | 702 | 230 | 92 | 185 |
| | 30 | 4 | 200L | 540 | 490 | 570 | 1410 | 605 | 318 | 748 | 518 | 118 | 6 | 767 | 261 | 92 | 228 |
| | 90 | 2 | 280S/M | 580 | 530 | 610 | 1660 | 730 | 318 | 748 | 518 | 118 | 6 | 1071 | 410 | 100 | 710 |
| | 110 | 2 | 315S/M | 640 | 580 | 680 | 1790 | 795 | 369 | 799 | 569 | 169 | 6 | 1244 | 436 | 135 | 900 |
| 125-365 | 7,5 | 6 | 160M | 540 | 490 | 570 | 1310 | 555 | 318 | 778 | 518 | 118 | 6 | 598 | 215 | 92 | 118 |
| | 9,2 | 6 | 160L | 540 | 490 | 570 | 1310 | 555 | 318 | 778 | 518 | 118 | 6 | 642 | 215 | 92 | 135 |
| | 11 | 6 | 160L | 540 | 490 | 570 | 1310 | 555 | 318 | 778 | 518 | 118 | 6 | 642 | 215 | 92 | 140 |
| | 15 | 6 | 180L | 540 | 490 | 570 | 1370 | 585 | 318 | 778 | 518 | 118 | 6 | 702 | 230 | 92 | 185 |
| | 18,5 | 6 | 200L | 540 | 490 | 570 | 1410 | 605 | 318 | 778 | 518 | 118 | 6 | 767 | 261 | 92 | 215 |
| | 22 | 6 | 200L | 540 | 490 | 570 | 1410 | 605 | 318 | 778 | 518 | 118 | 6 | 767 | 261 | 92 | 225 |
| | 30 | 6 | 225S/M | 540 | 490 | 570 | 1470 | 635 | 318 | 778 | 518 | 118 | 6 | 886 | 315 | 93 | 380 |
| | 18,5 | 4 | 180M | 540 | 490 | 570 | 1370 | 585 | 318 | 778 | 518 | 118 | 6 | 664 | 230 | 92 | 188 |
| | 22 | 4 | 180L | 540 | 490 | 570 | 1370 | 585 | 318 | 778 | 518 | 118 | 6 | 702 | 230 | 92 | 185 |
| | 30 | 4 | 200L | 540 | 490 | 570 | 1410 | 605 | 318 | 778 | 518 | 118 | 6 | 767 | 261 | 92 | 228 |
| | 37 | 4 | 225S/M | 540 | 490 | 570 | 1470 | 635 | 318 | 778 | 518 | 118 | 6 | 886 | 315 | 93 | 365 |
| | 45 | 4 | 225S/M | 540 | 490 | 570 | 1470 | 635 | 318 | 778 | 518 | 118 | 6 | 886 | 315 | 93 | 400 |
| | 55 | 4 | 250S/M | 540 | 490 | 570 | 1560 | 680 | 318 | 778 | 518 | 118 | 6 | 965 | 337 | 98 | 500 |

Omega 125-500 a 150-460



Anchor bolts dimensions: page 31

Permissible dimensional deviations for dimensions without tolerance indication:

- General: ISO 2768 CK
- Shaft centreline heights: DIN 747
- Welded parts: ISO 13920-B/F
- Flange position: ISO 8062-3-DCTG13
- Flanges: to the corresponding standard
- Keyway and key: DIN 6885, sheet 1
- Shaft diameter (coupling): DIN 7155-h₆

Information on installation:

This drawing is not true to scale; it serves as an example only. The dimensions apply to Weg W22 50 Hz motors (up to and including IEC 355M/L frame size). The piping must be connected without transmitting any stresses or strains. The pump must not be used as support for the piping. Pipes must be fastened without transmitting any forces, vibrations or pipe weight to the pump. Observe the limits for forces and moments at the suction nozzle and at the discharge nozzle. The pump must not be connected with unbraced expansion joints.

Grout all areas of the baseplates completely with non-shrinking concrete. Observe the required compressive strength class C25/30 of the concrete in exposure class XC1 as per EN 206-1.

Pump dimensions

| Size | Pump dimensions (mm) | | | | | | | | Weight (kg) | |
|---------|----------------------|----------------|-----|----------------|----------------|----------------|----------------|-----|-------------|------------|
| | a ₁ | a ₂ | f | h ₁ | h ₂ | h ₃ | l ₂ | z | Pump | Water fill |
| 125-500 | 450 | 450 | 515 | 400 | 200 | 305 | 366 | 305 | 335 | 55 |
| 150-290 | 400 | 400 | 515 | 400 | 200 | 245 | 366 | 245 | 350 | 50 |
| 150-360 | 400 | 400 | 515 | 400 | 200 | 265 | 366 | 265 | 360 | 60 |
| 150-460 | 450 | 450 | 590 | 400 | 200 | 305 | 399 | 305 | 440 | 75 |

AE Coupling

| Size | Power (KW) | Nº of poles | Frame size | Pump and baseplate dimensions (mm) | | | | | | | | | Anchor bolts qty. | Motor | | Weight (kg) | |
|---------|------------|-------------|------------|------------------------------------|----------------|----------------|----------------|----------------|----------------|----------------|----------------|----------------|-------------------|-------|----------------|-------------|-------|
| | | | | b ₂ | G ₁ | G ₂ | l ₃ | l ₄ | h ₄ | h ₅ | h ₆ | h ₈ | | q | h ₇ | Base frame | Motor |
| 125-500 | 15 | 6 | 180L | 650 | 600 | 680 | 1320 | 560 | 318 | 823 | 518 | 118 | 6 | 702 | 230 | 100 | 185 |
| | 18,5 | 6 | 200L | 650 | 600 | 680 | 1360 | 580 | 318 | 823 | 518 | 118 | 6 | 767 | 261 | 95 | 215 |
| | 22 | 6 | 200L | 650 | 600 | 680 | 1360 | 580 | 318 | 823 | 518 | 118 | 6 | 767 | 261 | 95 | 225 |
| | 30 | 6 | 225S/M | 650 | 600 | 680 | 1430 | 615 | 318 | 823 | 518 | 118 | 6 | 886 | 315 | 95 | 380 |
| | 37 | 6 | 250S/M | 650 | 600 | 680 | 1500 | 650 | 318 | 823 | 518 | 118 | 6 | 965 | 337 | 100 | 430 |
| | 37 | 4 | 225S/M | 650 | 600 | 680 | 1430 | 615 | 318 | 823 | 518 | 118 | 6 | 886 | 315 | 95 | 365 |
| | 45 | 4 | 225S/M | 650 | 600 | 680 | 1430 | 615 | 318 | 823 | 518 | 118 | 6 | 886 | 315 | 95 | 400 |
| | 55 | 4 | 250S/M | 650 | 600 | 680 | 1500 | 650 | 318 | 823 | 518 | 118 | 6 | 965 | 337 | 100 | 500 |
| | 75 | 4 | 280S/M | 650 | 600 | 680 | 1570 | 685 | 318 | 823 | 518 | 118 | 6 | 1101 | 410 | 100 | 630 |
| | 90 | 4 | 280S/M | 650 | 600 | 680 | 1570 | 685 | 318 | 823 | 518 | 118 | 6 | 1101 | 410 | 100 | 700 |
| | 110 | 4 | 280S/M | 650 | 600 | 680 | 1570 | 685 | 318 | 823 | 518 | 118 | 6 | 1101 | 410 | 100 | 800 |
| 150-290 | 5,5 | 6 | 132M/L | 540 | 490 | 570 | 1170 | 970 | 318 | 763 | 518 | 118 | 4 | 515 | 182 | 77 | 78 |
| | 7,5 | 6 | 160M | 540 | 490 | 570 | 1270 | 535 | 318 | 763 | 518 | 118 | 6 | 598 | 215 | 91 | 118 |
| | 9,2 | 6 | 160L | 540 | 490 | 570 | 1270 | 535 | 318 | 763 | 518 | 118 | 6 | 642 | 215 | 91 | 135 |
| | 11 | 6 | 160L | 540 | 490 | 570 | 1270 | 535 | 318 | 763 | 518 | 118 | 6 | 642 | 215 | 91 | 140 |
| | 15 | 6 | 180L | 540 | 490 | 570 | 1320 | 560 | 318 | 763 | 518 | 118 | 6 | 702 | 230 | 91 | 185 |
| | 18,5 | 4 | 180M | 540 | 490 | 570 | 1320 | 560 | 318 | 763 | 518 | 118 | 6 | 664 | 230 | 91 | 188 |
| | 22 | 4 | 180L | 540 | 490 | 570 | 1320 | 560 | 318 | 763 | 518 | 118 | 6 | 702 | 230 | 91 | 185 |
| | 30 | 4 | 200L | 540 | 490 | 570 | 1360 | 580 | 318 | 763 | 518 | 118 | 6 | 767 | 261 | 91 | 228 |
| | 37 | 4 | 225S/M | 540 | 490 | 570 | 1420 | 610 | 318 | 763 | 518 | 118 | 6 | 886 | 315 | 91 | 365 |
| 150-360 | 9,2 | 6 | 160L | 540 | 490 | 570 | 1270 | 535 | 318 | 763 | 518 | 118 | 6 | 642 | 215 | 91 | 135 |
| | 11 | 6 | 160L | 540 | 490 | 570 | 1270 | 535 | 318 | 763 | 518 | 118 | 6 | 642 | 215 | 91 | 140 |
| | 15 | 6 | 180L | 540 | 490 | 570 | 1320 | 560 | 318 | 763 | 518 | 118 | 6 | 702 | 230 | 91 | 185 |
| | 18,5 | 6 | 200L | 540 | 490 | 570 | 1360 | 580 | 318 | 763 | 518 | 118 | 6 | 767 | 261 | 91 | 215 |
| | 22 | 6 | 200L | 540 | 490 | 570 | 1360 | 580 | 318 | 763 | 518 | 118 | 6 | 767 | 261 | 91 | 225 |
| | 30 | 4 | 200L | 540 | 490 | 570 | 1360 | 580 | 318 | 763 | 518 | 118 | 6 | 767 | 261 | 91 | 228 |
| | 37 | 4 | 225S/M | 540 | 490 | 570 | 1420 | 610 | 318 | 763 | 518 | 118 | 6 | 886 | 315 | 91 | 365 |
| | 45 | 4 | 225S/M | 540 | 490 | 570 | 1420 | 610 | 318 | 763 | 518 | 118 | 6 | 886 | 315 | 91 | 400 |
| | 55 | 4 | 250S/M | 540 | 490 | 570 | 1500 | 650 | 318 | 763 | 518 | 118 | 6 | 965 | 337 | 97 | 500 |
| | 75 | 4 | 280S/M | 580 | 490 | 610 | 1570 | 685 | 318 | 763 | 518 | 118 | 6 | 1101 | 410 | 98 | 630 |

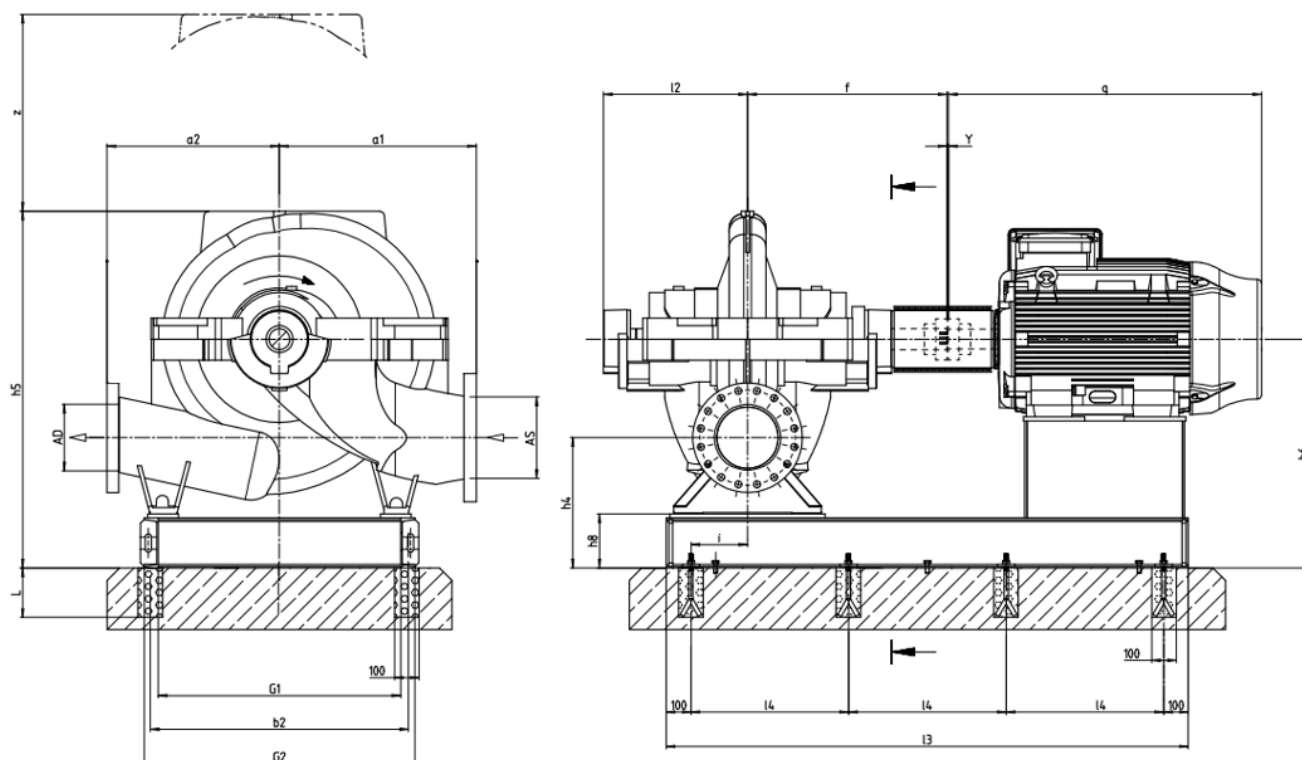
| Size | Power (KW) | N° of poles | Frame size | Pump and baseplate dimensions (mm) | | | | | | | | | Anchor bolts qty. | Motor | | Weight (kg) | |
|---------|------------|-------------|------------|------------------------------------|----------------|----------------|----------------|----------------|----------------|----------------|----------------|----------------|-------------------|-------|----------------|-------------|-------|
| | | | | b ₂ | G ₁ | G ₂ | I ₃ | I ₄ | h ₄ | h ₅ | h ₆ | h ₈ | | q | h ₇ | Base frame | Motor |
| 150-460 | 18,5 | 6 | 200L | 650 | 600 | 680 | 1480 | 640 | 318 | 823 | 518 | 118 | 6 | 767 | 261 | 99 | 215 |
| | 22 | 6 | 200L | 650 | 600 | 680 | 1480 | 640 | 318 | 823 | 518 | 118 | 6 | 767 | 261 | 99 | 225 |
| | 30 | 6 | 225S/M | 650 | 600 | 680 | 1550 | 675 | 318 | 823 | 518 | 118 | 6 | 886 | 315 | 100 | 380 |
| | 37 | 6 | 250S/M | 650 | 600 | 680 | 1620 | 710 | 318 | 823 | 518 | 118 | 6 | 965 | 337 | 103 | 430 |
| | 45 | 6 | 280S/M | 650 | 600 | 680 | 1700 | 750 | 318 | 823 | 518 | 118 | 6 | 1101 | 410 | 104 | 640 |
| | 37 | 4 | 225S/M | 650 | 600 | 680 | 1550 | 675 | 318 | 823 | 518 | 118 | 6 | 886 | 315 | 100 | 365 |
| | 45 | 4 | 225S/M | 650 | 600 | 680 | 1550 | 675 | 318 | 823 | 518 | 118 | 6 | 886 | 315 | 100 | 400 |
| | 55 | 4 | 250S/M | 650 | 600 | 680 | 1620 | 710 | 318 | 823 | 518 | 118 | 6 | 965 | 337 | 103 | 500 |
| | 75 | 4 | 280S/M | 650 | 600 | 680 | 1700 | 750 | 318 | 823 | 518 | 118 | 6 | 1101 | 410 | 104 | 630 |
| | 90 | 4 | 280S/M | 650 | 600 | 680 | 1700 | 750 | 318 | 823 | 518 | 118 | 6 | 1101 | 410 | 104 | 700 |
| | 110 | 4 | 280S/M | 650 | 600 | 680 | 1700 | 750 | 318 | 823 | 518 | 118 | 6 | 1101 | 410 | 104 | 800 |
| | 132 | 4 | 315S/M | 640 | 580 | 680 | 1820 | 810 | 318 | 823 | 518 | 169 | 6 | 1274 | 436 | 134 | 1010 |
| | 150 | 4 | 315S/M | 640 | 580 | 680 | 1820 | 810 | 318 | 823 | 518 | 169 | 6 | 1274 | 436 | 134 | 1030 |

AW Coupling

| Size | Power (KW) | N° of poles | Frame size | Pump and baseplate dimensions (mm) | | | | | | | | | Anchor bolts qty. | Motor | | Weight (kg) | |
|---------|------------|-------------|------------|------------------------------------|----------------|----------------|----------------|----------------|----------------|----------------|----------------|----------------|-------------------|-------|----------------|-------------|-------|
| | | | | b ₂ | G ₁ | G ₂ | I ₃ | I ₄ | h ₄ | h ₅ | h ₆ | h ₈ | | q | h ₇ | Base frame | Motor |
| 125-500 | 15 | 6 | 180L | 650 | 600 | 680 | 1370 | 585 | 318 | 823 | 518 | 118 | 6 | 702 | 230 | 101 | 185 |
| | 18,5 | 6 | 200L | 650 | 600 | 680 | 1420 | 610 | 318 | 823 | 518 | 118 | 6 | 767 | 261 | 96 | 215 |
| | 22 | 6 | 200L | 650 | 600 | 680 | 1420 | 610 | 318 | 823 | 518 | 118 | 6 | 767 | 261 | 96 | 225 |
| | 30 | 6 | 225S/M | 650 | 600 | 680 | 1490 | 645 | 318 | 823 | 518 | 118 | 6 | 886 | 315 | 96 | 380 |
| | 37 | 6 | 250S/M | 650 | 600 | 680 | 1560 | 680 | 318 | 823 | 518 | 118 | 6 | 965 | 337 | 101 | 430 |
| | 37 | 4 | 225S/M | 650 | 600 | 680 | 1490 | 645 | 318 | 823 | 518 | 118 | 6 | 886 | 315 | 96 | 365 |
| | 45 | 4 | 225S/M | 650 | 600 | 680 | 1490 | 645 | 318 | 823 | 518 | 118 | 6 | 886 | 315 | 96 | 400 |
| | 55 | 4 | 250S/M | 650 | 600 | 680 | 1560 | 645 | 318 | 823 | 518 | 118 | 6 | 965 | 337 | 101 | 500 |
| | 75 | 4 | 280S/M | 650 | 600 | 680 | 1660 | 680 | 318 | 823 | 518 | 118 | 6 | 1101 | 410 | 101 | 630 |
| | 90 | 4 | 280S/M | 650 | 600 | 680 | 1660 | 680 | 318 | 823 | 518 | 118 | 6 | 1101 | 410 | 101 | 700 |
| 150-290 | 110 | 4 | 280S/M | 650 | 600 | 680 | 1660 | 680 | 318 | 823 | 518 | 118 | 6 | 1101 | 410 | 101 | 800 |
| | 5,5 | 6 | 132M/L | 540 | 490 | 570 | 1220 | 510 | 318 | 763 | 518 | 118 | 6 | 515 | 182 | 92 | 78 |
| | 7,5 | 6 | 160M | 540 | 490 | 570 | 1310 | 555 | 318 | 763 | 518 | 118 | 6 | 598 | 215 | 92 | 118 |
| | 9,2 | 6 | 160L | 540 | 490 | 570 | 1310 | 555 | 318 | 763 | 518 | 118 | 6 | 642 | 215 | 92 | 135 |
| | 11 | 6 | 160L | 540 | 490 | 570 | 1310 | 555 | 318 | 763 | 518 | 118 | 6 | 642 | 215 | 92 | 140 |
| | 15 | 6 | 180L | 540 | 490 | 570 | 1370 | 585 | 318 | 763 | 518 | 118 | 6 | 702 | 230 | 92 | 185 |
| | 18,5 | 4 | 180M | 540 | 490 | 570 | 1370 | 585 | 318 | 763 | 518 | 118 | 6 | 664 | 230 | 92 | 188 |
| | 22 | 4 | 180L | 540 | 490 | 570 | 1370 | 585 | 318 | 763 | 518 | 118 | 6 | 702 | 230 | 92 | 185 |
| | 30 | 4 | 200L | 540 | 490 | 570 | 1410 | 605 | 318 | 763 | 518 | 118 | 6 | 767 | 261 | 92 | 228 |
| 150-360 | 37 | 4 | 225S/M | 540 | 490 | 570 | 1470 | 635 | 318 | 763 | 518 | 118 | 6 | 886 | 315 | 93 | 365 |
| | 9,2 | 6 | 160L | 540 | 490 | 570 | 1310 | 555 | 318 | 763 | 518 | 118 | 6 | 642 | 215 | 92 | 135 |
| | 11 | 6 | 160L | 540 | 490 | 570 | 1310 | 555 | 318 | 763 | 518 | 118 | 6 | 642 | 215 | 92 | 140 |
| | 15 | 6 | 180L | 540 | 490 | 570 | 1370 | 585 | 318 | 763 | 518 | 118 | 6 | 702 | 230 | 92 | 185 |
| | 18,5 | 6 | 200L | 540 | 490 | 570 | 1410 | 605 | 318 | 763 | 518 | 118 | 6 | 767 | 261 | 92 | 215 |
| | 22 | 6 | 200L | 540 | 490 | 570 | 1410 | 605 | 318 | 763 | 518 | 118 | 6 | 767 | 261 | 92 | 225 |
| | 30 | 4 | 200L | 540 | 490 | 570 | 1410 | 605 | 318 | 763 | 518 | 118 | 6 | 767 | 261 | 92 | 228 |
| | 37 | 4 | 225S/M | 540 | 490 | 570 | 1470 | 635 | 318 | 763 | 518 | 118 | 6 | 886 | 315 | 93 | 365 |
| | 45 | 4 | 225S/M | 540 | 490 | 570 | 1470 | 635 | 318 | 763 | 518 | 118 | 6 | 886 | 315 | 93 | 400 |
| | 55 | 4 | 250S/M | 540 | 490 | 570 | 1560 | 680 | 318 | 763 | 518 | 118 | 6 | 965 | 337 | 98 | 500 |
| | 75 | 4 | 280S/M | 580 | 490 | 610 | 1660 | 730 | 318 | 763 | 518 | 118 | 6 | 1101 | 410 | 100 | 630 |

| Size | Power (KW) | Nº of poles | Frame size | Pump and baseplate dimensions (mm) | | | | | | | | | | Anchor bolts qty. | Motor | | Weight (kg) | |
|---------|------------|-------------|------------|------------------------------------|----------------|----------------|----------------|----------------|----------------|----------------|----------------|----------------|---|-------------------|----------------|------------|-------------|--|
| | | | | b ₂ | G ₁ | G ₂ | l ₃ | l ₄ | h ₄ | h ₅ | h ₆ | h ₈ | q | | h ₇ | Base frame | Motor | |
| 150-460 | 18,5 | 6 | 200L | 650 | 600 | 680 | 1530 | 665 | 318 | 823 | 518 | 118 | 6 | 767 | 261 | 100 | 215 | |
| | 22 | 6 | 200L | 650 | 600 | 680 | 1530 | 665 | 318 | 823 | 518 | 118 | 6 | 767 | 261 | 100 | 225 | |
| | 30 | 6 | 225S/M | 650 | 600 | 680 | 1600 | 700 | 318 | 823 | 518 | 118 | 6 | 886 | 315 | 101 | 380 | |
| | 37 | 6 | 250S/M | 650 | 600 | 680 | 1680 | 740 | 318 | 823 | 518 | 118 | 6 | 965 | 337 | 106 | 430 | |
| | 45 | 6 | 280S/M | 650 | 600 | 680 | 1790 | 795 | 318 | 823 | 518 | 118 | 6 | 1101 | 410 | 106 | 640 | |
| | 37 | 4 | 225S/M | 650 | 600 | 680 | 1600 | 700 | 318 | 823 | 518 | 118 | 6 | 886 | 315 | 101 | 365 | |
| | 45 | 4 | 225S/M | 650 | 600 | 680 | 1600 | 700 | 318 | 823 | 518 | 118 | 6 | 886 | 315 | 101 | 400 | |
| | 55 | 4 | 250S/M | 650 | 600 | 680 | 1680 | 740 | 318 | 823 | 518 | 118 | 6 | 965 | 337 | 106 | 500 | |
| | 75 | 4 | 280S/M | 650 | 600 | 680 | 1790 | 795 | 318 | 823 | 518 | 118 | 6 | 1101 | 410 | 106 | 630 | |
| | 90 | 4 | 280S/M | 650 | 600 | 680 | 1790 | 795 | 318 | 823 | 518 | 118 | 6 | 1101 | 410 | 106 | 700 | |
| | 110 | 4 | 280S/M | 650 | 600 | 680 | 1790 | 795 | 318 | 823 | 518 | 118 | 6 | 1101 | 410 | 106 | 800 | |
| | 132 | 4 | 315S/M | 640 | 580 | 680 | 1910 | 855 | 318 | 823 | 518 | 169 | 6 | 1274 | 436 | 136 | 1010 | |
| | 150 | 4 | 315S/M | 640 | 580 | 680 | 1910 | 855 | 318 | 823 | 518 | 169 | 6 | 1274 | 436 | 136 | 1030 | |

Omega 150-605 a 200-520



Anchor bolts dimensions: page 31

Permissible dimensional deviations for dimensions without tolerance indication:

- General: ISO 2768 CK
- Shaft centreline heights: DIN 747
- Welded parts: ISO 13920-B/F
- Flange position: ISO 8062-3-DCTG13
- Flanges: to the corresponding standard
- Keyway and key: DIN 6885, sheet 1
- Shaft diameter (coupling): DIN 7155-h₆

Information on installation:

This drawing is not true to scale; it serves as an example only. The dimensions apply to Weg W22 50 Hz motors (up to and including IEC 355M/L frame size). The piping must be connected without transmitting any stresses or strains. The pump must not be used as support for the piping. Pipes must be fastened without transmitting any forces, vibrations or pipe weight to the pump. Observe the limits for forces and moments at the suction nozzle and at the discharge nozzle. The pump must not be connected with unbraced expansion joints.

Grout all areas of the baseplates completely with non-shrinking concrete. Observe the required compressive strength class C25/30 of the concrete in exposure class XC1 as per EN 206-1.

Pump dimensions

| Size | Pump dimensions (mm) | | | | | | | | Weight (kg) | |
|---------|----------------------|----------------|-----|----------------|----------------|----------------|----------------|-----|-------------|------------|
| | a ₁ | a ₂ | f | h ₁ | h ₂ | h ₃ | l ₂ | z | Pump | Water fill |
| 150-605 | 600 | 500 | 590 | 500 | 300 | 370 | 399 | 370 | 650 | 90 |
| 200-320 | 450 | 450 | 590 | 500 | 240 | 285 | 399 | 285 | 450 | 80 |
| 200-420 | 500 | 500 | 590 | 500 | 240 | 310 | 399 | 310 | 520 | 95 |
| 200-520 | 600 | 500 | 655 | 560 | 300 | 370 | 464 | 370 | 840 | 115 |

AE Coupling

| Size | Power (KW) | N° of poles | Frame size | Pump and baseplate dimensions (mm) | | | | | | | | | Anchor bolts qty. | Motor | | Weight (kg) | |
|---------|------------|-------------|------------|------------------------------------|----------------|----------------|----------------|----------------|----------------|----------------|----------------|----------------|-------------------|-------|----------------|-------------|-------|
| | | | | b ₂ | G ₁ | G ₂ | l ₃ | l ₄ | h ₄ | h ₅ | h ₆ | h ₈ | | q | h ₇ | Base frame | Motor |
| 150-605 | 30 | 6 | 225S/M | 790 | 740 | 820 | 1550 | 675 | 318 | 988 | 618 | 118 | 6 | 886 | 315 | 120 | 380 |
| | 37 | 6 | 250S/M | 790 | 740 | 820 | 1620 | 710 | 318 | 988 | 618 | 118 | 6 | 965 | 337 | 125 | 430 |
| | 45 | 6 | 280S/M | 790 | 720 | 820 | 1700 | 790 | 369 | 1039 | 669 | 169 | 6 | 1101 | 410 | 156 | 640 |
| | 55 | 6 | 280S/M | 790 | 720 | 820 | 1700 | 790 | 369 | 1039 | 669 | 169 | 6 | 1101 | 410 | 156 | 665 |
| | 75 | 6 | 315S/M | 790 | 720 | 820 | 1820 | 810 | 369 | 1039 | 669 | 169 | 8 | 1274 | 436 | 152 | 920 |
| | 90 | 6 | 315S/M | 790 | 720 | 820 | 1820 | 810 | 369 | 1039 | 669 | 169 | 8 | 1274 | 436 | 152 | 990 |
| | 90 | 4 | 280S/M | 790 | 720 | 820 | 1700 | 790 | 369 | 1039 | 669 | 169 | 6 | 1101 | 410 | 156 | 700 |
| | 110 | 4 | 280S/M | 790 | 720 | 820 | 1700 | 790 | 369 | 1039 | 669 | 169 | 6 | 1101 | 410 | 156 | 800 |
| | 132 | 4 | 315S/M | 790 | 720 | 820 | 1820 | 810 | 369 | 1039 | 669 | 169 | 6 | 1274 | 436 | 152 | 1010 |
| | 150 | 4 | 315S/M | 790 | 720 | 820 | 1820 | 810 | 369 | 1039 | 669 | 169 | 6 | 1274 | 436 | 152 | 1030 |
| 200-320 | 11 | 6 | 160L | 650 | 600 | 680 | 1390 | 595 | 378 | 903 | 618 | 118 | 6 | 642 | 215 | 117 | 140 |
| | 15 | 6 | 180L | 650 | 600 | 680 | 1430 | 615 | 378 | 903 | 618 | 118 | 6 | 702 | 230 | 120 | 185 |
| | 18,5 | 6 | 200L | 650 | 600 | 680 | 1480 | 640 | 378 | 903 | 618 | 118 | 6 | 767 | 261 | 122 | 215 |
| | 22 | 6 | 200L | 650 | 600 | 680 | 1480 | 640 | 378 | 903 | 618 | 118 | 6 | 767 | 261 | 122 | 225 |
| | 30 | 6 | 225S/M | 650 | 600 | 680 | 1550 | 675 | 378 | 903 | 618 | 118 | 6 | 886 | 315 | 125 | 380 |
| | 45 | 4 | 225S/M | 650 | 600 | 680 | 1550 | 645 | 378 | 903 | 618 | 118 | 6 | 886 | 315 | 125 | 400 |
| | 55 | 4 | 250S/M | 650 | 600 | 680 | 1620 | 710 | 378 | 903 | 618 | 118 | 6 | 965 | 337 | 121 | 500 |
| | 75 | 4 | 280S/M | 640 | 580 | 680 | 1700 | 750 | 429 | 954 | 669 | 169 | 6 | 1101 | 410 | 149 | 630 |
| 200-420 | 18,5 | 6 | 200L | 650 | 600 | 680 | 1480 | 640 | 378 | 928 | 618 | 118 | 6 | 767 | 261 | 122 | 215 |
| | 22 | 6 | 200L | 650 | 600 | 680 | 1480 | 640 | 378 | 928 | 618 | 118 | 6 | 767 | 261 | 122 | 225 |
| | 30 | 6 | 225S/M | 650 | 600 | 680 | 1550 | 675 | 378 | 928 | 618 | 118 | 6 | 886 | 315 | 125 | 380 |
| | 37 | 6 | 250S/M | 650 | 600 | 680 | 1620 | 710 | 378 | 928 | 618 | 118 | 6 | 965 | 337 | 121 | 430 |
| | 55 | 4 | 250S/M | 650 | 600 | 680 | 1620 | 710 | 378 | 928 | 618 | 118 | 6 | 965 | 337 | 121 | 500 |
| | 75 | 4 | 280S/M | 640 | 580 | 680 | 1700 | 750 | 429 | 979 | 669 | 169 | 6 | 1101 | 410 | 149 | 630 |
| | 90 | 4 | 280S/M | 640 | 580 | 680 | 1700 | 750 | 429 | 979 | 669 | 169 | 6 | 1101 | 410 | 149 | 700 |
| | 110 | 4 | 280S/M | 640 | 580 | 680 | 1700 | 750 | 429 | 979 | 669 | 169 | 6 | 1101 | 410 | 149 | 800 |
| | 132 | 4 | 315S/M | 640 | 580 | 680 | 1820 | 810 | 429 | 979 | 669 | 169 | 6 | 1274 | 436 | 157 | 1010 |
| | 150 | 4 | 315S/M | 640 | 580 | 680 | 1820 | 810 | 429 | 979 | 669 | 169 | 6 | 1274 | 436 | 157 | 1030 |

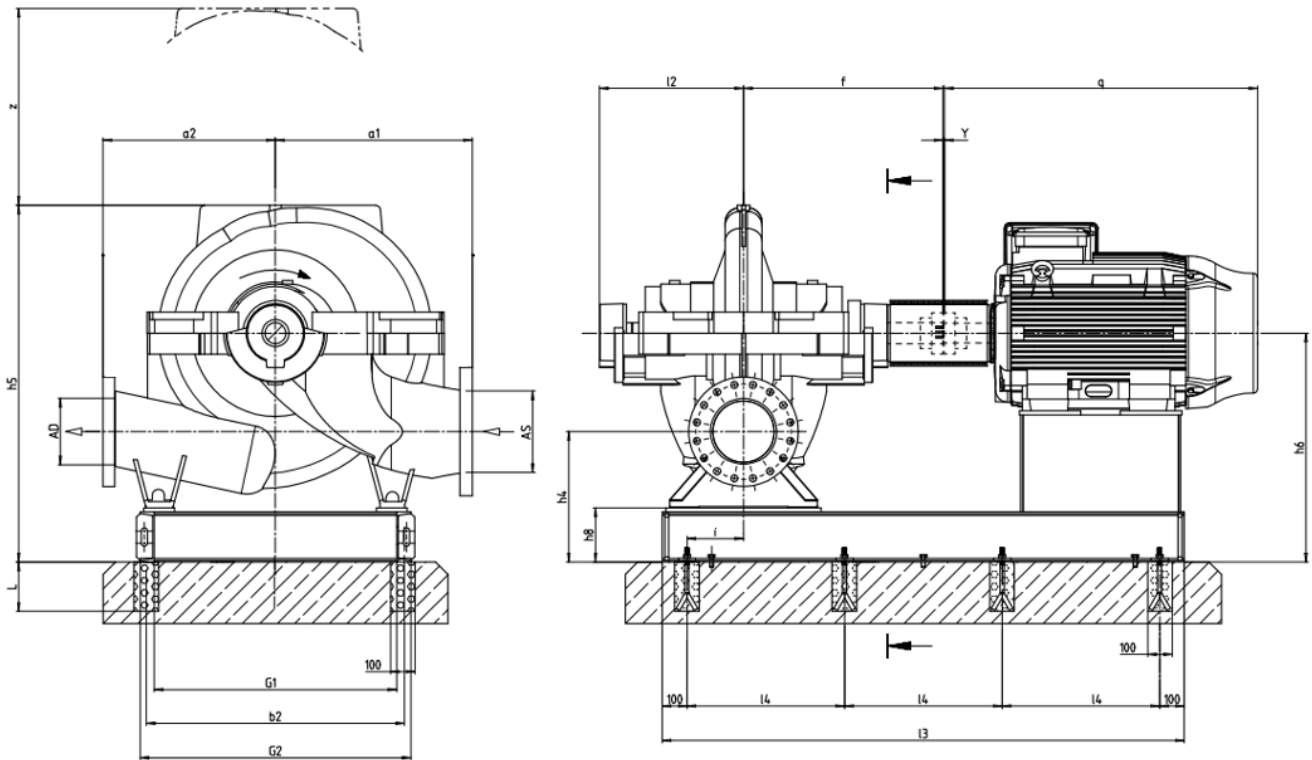
| Size | Power (KW) | Nº of poles | Frame size | Pump and baseplate dimensions (mm) | | | | | | | | | Anchor bolts qty. | Motor | | Weight (kg) | |
|---------|------------|-------------|------------|------------------------------------|----------------|----------------|----------------|----------------|----------------|----------------|----------------|----------------|-------------------|-------|----------------|-------------|-------|
| | | | | b ₂ | G ₁ | G ₂ | I ₃ | I ₄ | h ₄ | h ₅ | h ₆ | h ₈ | | q | h ₇ | Base frame | Motor |
| 200-520 | 37 | 6 | 250S/M | 780 | 720 | 820 | 1670 | 735 | 429 | 1099 | 729 | 169 | 6 | 965 | 337 | 166 | 430 |
| | 45 | 6 | 280S/M | 780 | 720 | 820 | 1760 | 780 | 429 | 1099 | 729 | 169 | 6 | 1101 | 410 | 169 | 640 |
| | 55 | 6 | 280S/M | 780 | 720 | 820 | 1760 | 780 | 429 | 1099 | 729 | 169 | 6 | 1101 | 410 | 169 | 665 |
| | 75 | 6 | 315S/M | 780 | 720 | 820 | 1890 | 845 | 429 | 1099 | 729 | 169 | 6 | 1274 | 436 | 179 | 920 |
| | 90 | 6 | 315S/M | 780 | 720 | 820 | 1890 | 845 | 429 | 1099 | 729 | 169 | 6 | 1274 | 436 | 179 | 990 |
| | 110 | 6 | 315S/M | 780 | 720 | 820 | 1890 | 845 | 429 | 1099 | 729 | 169 | 6 | 1274 | 436 | 179 | 1040 |
| | 90 | 4 | 280S/M | 780 | 720 | 820 | 1760 | 780 | 429 | 1099 | 729 | 169 | 6 | 1101 | 410 | 169 | 700 |
| | 110 | 4 | 280S/M | 780 | 720 | 820 | 1760 | 780 | 429 | 1099 | 729 | 169 | 6 | 1101 | 410 | 169 | 800 |
| | 132 | 4 | 315S/M | 780 | 720 | 820 | 1890 | 845 | 429 | 1099 | 729 | 169 | 6 | 1274 | 436 | 179 | 1010 |
| | 150 | 4 | 315S/M | 780 | 720 | 820 | 1890 | 845 | 429 | 1099 | 729 | 169 | 6 | 1274 | 436 | 179 | 1030 |

AW Coupling

| Size | Power (KW) | Nº of poles | Frame size | Pump and baseplate dimensions (mm) | | | | | | | | | | Anchor bolts qty. | Motor | | Weight (kg) | |
|---------|------------|-------------|------------|------------------------------------|----------------|----------------|----------------|----------------|----------------|----------------|----------------|----------------|---|----------------------|----------------|---------------|-------------|--|
| | | | | b ₂ | G ₁ | G ₂ | I ₃ | I ₄ | h ₄ | h ₅ | h ₆ | h ₈ | q | | h ₇ | Base frame | Motor | |
| 150-605 | 30 | 6 | 225S/M | 790 | 740 | 820 | 1610 | 705 | 318 | 988 | 618 | 118 | 6 | 886 | 315 | 121 | 380 | |
| | 37 | 6 | 250S/M | 790 | 740 | 820 | 1680 | 740 | 318 | 988 | 618 | 118 | 6 | 965 | 337 | 128 | 430 | |
| | 45 | 6 | 280S/M | 790 | 720 | 820 | 1790 | 795 | 369 | 1039 | 669 | 169 | 6 | 1101 | 410 | 158 | 640 | |
| | 55 | 6 | 280S/M | 790 | 720 | 820 | 1790 | 795 | 369 | 1039 | 669 | 169 | 6 | 1101 | 410 | 158 | 665 | |
| | 75 | 6 | 315S/M | 790 | 720 | 820 | 1910 | 855 | 369 | 1039 | 669 | 169 | 6 | 1274 | 436 | 166 | 920 | |
| | 90 | 6 | 315S/M | 790 | 720 | 820 | 1910 | 855 | 369 | 1039 | 669 | 169 | 6 | 1274 | 436 | 166 | 990 | |
| | 90 | 4 | 280S/M | 790 | 720 | 820 | 1790 | 795 | 369 | 1039 | 669 | 169 | 6 | 1101 | 410 | 158 | 700 | |
| | 110 | 4 | 280S/M | 790 | 720 | 820 | 1790 | 795 | 369 | 1039 | 669 | 169 | 6 | 1101 | 410 | 158 | 800 | |
| | 132 | 4 | 315S/M | 790 | 720 | 820 | 1910 | 855 | 369 | 1039 | 669 | 169 | 6 | 1274 | 436 | 166 | 1010 | |
| | 150 | 4 | 315S/M | 790 | 720 | 820 | 1910 | 855 | 369 | 1039 | 669 | 169 | 6 | 1274 | 436 | 166 | 1030 | |
| 200-320 | 11 | 6 | 160L | 650 | 600 | 680 | 1440 | 620 | 378 | 903 | 618 | 118 | 6 | 642 | 215 | 119 | 140 | |
| | 15 | 6 | 180L | 650 | 600 | 680 | 1480 | 640 | 378 | 903 | 618 | 118 | 6 | 702 | 230 | 121 | 185 | |
| | 18,5 | 6 | 200L | 650 | 600 | 680 | 1530 | 665 | 378 | 903 | 618 | 118 | 6 | 767 | 261 | 123 | 215 | |
| | 22 | 6 | 200L | 650 | 600 | 680 | 1530 | 665 | 378 | 903 | 618 | 118 | 6 | 767 | 261 | 123 | 225 | |
| | 30 | 6 | 225S/M | 650 | 600 | 680 | 1600 | 700 | 378 | 903 | 618 | 118 | 6 | 886 | 315 | 126 | 380 | |
| | 45 | 4 | 225S/M | 650 | 600 | 680 | 1600 | 700 | 378 | 903 | 618 | 118 | 6 | 886 | 315 | 126 | 400 | |
| | 55 | 4 | 250S/M | 650 | 600 | 680 | 1680 | 740 | 378 | 903 | 618 | 118 | 6 | 965 | 337 | 124 | 500 | |
| | 75 | 4 | 280S/M | 640 | 580 | 680 | 1760 | 780 | 429 | 954 | 669 | 169 | 6 | 1101 | 410 | 150 | 630 | |
| 200-420 | 18,5 | 6 | 200L | 650 | 600 | 680 | 1530 | 665 | 378 | 928 | 618 | 118 | 6 | 767 | 261 | 123 | 215 | |
| | 22 | 6 | 200L | 650 | 600 | 680 | 1530 | 665 | 378 | 928 | 618 | 118 | 6 | 767 | 261 | 123 | 225 | |
| | 30 | 6 | 225S/M | 650 | 600 | 680 | 1600 | 700 | 378 | 928 | 618 | 118 | 6 | 886 | 315 | 126 | 380 | |
| | 37 | 6 | 250S/M | 650 | 600 | 680 | 1680 | 740 | 378 | 928 | 618 | 118 | 6 | 965 | 337 | 124 | 430 | |
| | 55 | 4 | 250S/M | 650 | 600 | 680 | 1680 | 740 | 378 | 928 | 618 | 118 | 6 | 965 | 337 | 124 | 500 | |
| | 75 | 4 | 280S/M | 640 | 580 | 680 | 1760 | 780 | 429 | 979 | 669 | 169 | 6 | 1101 | 410 | 150 | 630 | |
| | 90 | 4 | 280S/M | 640 | 580 | 680 | 1760 | 780 | 429 | 979 | 669 | 169 | 6 | 1101 | 410 | 150 | 700 | |
| | 110 | 4 | 280S/M | 640 | 580 | 680 | 1760 | 780 | 429 | 979 | 669 | 169 | 6 | 1101 | 410 | 150 | 800 | |
| | 132 | 4 | 315S/M | 640 | 580 | 680 | 1880 | 840 | 429 | 979 | 669 | 169 | 6 | 1274 | 436 | 158 | 1010 | |
| | 150 | 4 | 315S/M | 640 | 580 | 680 | 1880 | 840 | 429 | 979 | 669 | 169 | 6 | 1274 | 436 | 158 | 1030 | |

| Size | Power (KW) | N° of poles | Frame size | Pump and baseplate dimensions (mm) | | | | | | | | | Anchor bolts qty. | Motor | | Weight (kg) | |
|---------|------------|-------------|------------|------------------------------------|----------------|----------------|----------------|----------------|----------------|----------------|----------------|----------------|----------------------|-------|----------------|---------------|-------|
| | | | | b ₂ | G ₁ | G ₂ | I ₃ | I ₄ | h ₄ | h ₅ | h ₆ | h ₈ | | q | h ₇ | Base frame | Motor |
| 200-520 | 37 | 6 | 250S/M | 780 | 720 | 820 | 1730 | 765 | 429 | 1099 | 729 | 169 | 6 | 965 | 337 | 167 | 430 |
| | 45 | 6 | 280S/M | 780 | 720 | 820 | 1850 | 825 | 429 | 1099 | 729 | 169 | 6 | 1101 | 410 | 171 | 640 |
| | 55 | 6 | 280S/M | 780 | 720 | 820 | 1850 | 825 | 429 | 1099 | 729 | 169 | 6 | 1101 | 410 | 171 | 665 |
| | 75 | 6 | 315S/M | 780 | 720 | 820 | 1980 | 890 | 429 | 1099 | 729 | 169 | 8 | 1274 | 436 | 181 | 920 |
| | 90 | 6 | 315S/M | 780 | 720 | 820 | 1980 | 890 | 429 | 1099 | 729 | 169 | 8 | 1274 | 436 | 181 | 990 |
| | 110 | 6 | 315S/M | 780 | 720 | 820 | 1980 | 890 | 429 | 1099 | 729 | 169 | 8 | 1274 | 436 | 181 | 1040 |
| | 90 | 4 | 280S/M | 780 | 720 | 820 | 1850 | 825 | 429 | 1099 | 729 | 169 | 6 | 1101 | 410 | 171 | 700 |
| | 110 | 4 | 280S/M | 780 | 720 | 820 | 1850 | 825 | 429 | 1099 | 729 | 169 | 6 | 1101 | 410 | 171 | 800 |
| | 132 | 4 | 315S/M | 780 | 720 | 820 | 1980 | 890 | 429 | 1099 | 729 | 169 | 6 | 1274 | 436 | 181 | 1010 |
| | 150 | 4 | 315S/M | 780 | 720 | 820 | 1980 | 890 | 429 | 1099 | 729 | 169 | 6 | 1274 | 436 | 181 | 1030 |

Omega 200-670 a 250-480



Anchor bolts dimensions: page 31

Permissible dimensional deviations for dimensions without tolerance indication:

- General: ISO 2768 CK
- Shaft centreline heights: DIN 747
- Welded parts: ISO 13920-B/F
- Flange position: ISO 8062-3-DCTG13
- Flanges: to the corresponding standard
- Keyway and key: DIN 6885, sheet 1
- Shaft diameter (coupling): DIN 7155-h₆

Information on installation:

This drawing is not true to scale; it serves as an example only. The dimensions apply to Weg W22 50 Hz motors (up to and including IEC 355M/L frame size). The piping must be connected without transmitting any stresses or strains. The pump must not be used as support for the piping. Pipes must be fastened without transmitting any forces, vibrations or pipe weight to the pump. Observe the limits for forces and moments at the suction nozzle and at the discharge nozzle. The pump must not be connected with unbraced expansion joints.

Grout all areas of the baseplates completely with non-shrinking concrete. Observe the required compressive strength class C25/30 of the concrete in exposure class XC1 as per EN 206-1.

Pump dimensions

| Size | Pump dimensions (mm) | | | | | | | | Weight (kg) | |
|---------|----------------------|----------------|-----|----------------|----------------|----------------|----------------|-----|-------------|------------|
| | a ₁ | a ₂ | f | h ₁ | h ₂ | h ₃ | l ₂ | z | Pump | Water fill |
| 200-670 | 650 | 550 | 655 | 600 | 350 | 430 | 464 | 430 | 990 | 140 |
| 250-370 | 500 | 500 | 655 | 600 | 300 | 320 | 464 | 320 | 665 | 125 |
| 250-480 | 550 | 550 | 730 | 600 | 300 | 355 | 535 | 355 | 910 | 145 |

AE Coupling

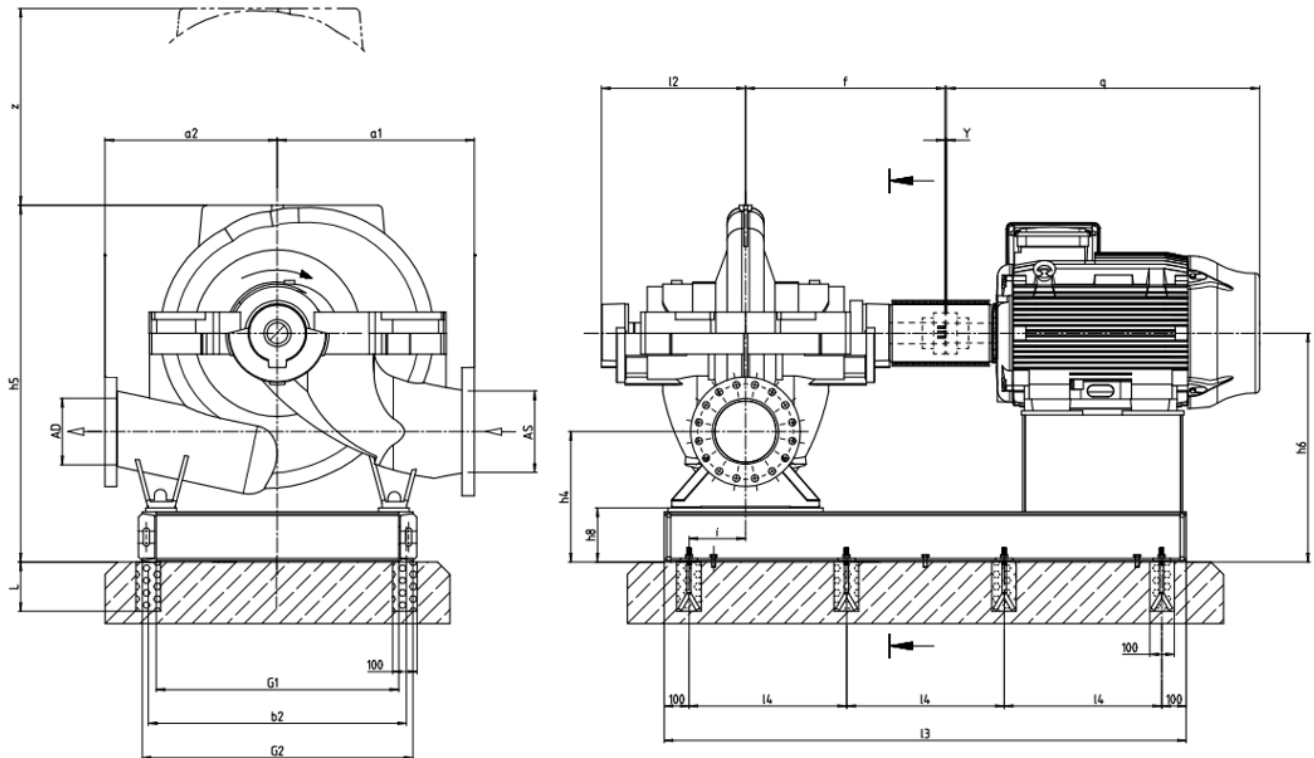
| Size | Power (KW) | Nº of poles | Frame size | Pump and baseplate dimensions (mm) | | | | | | | | | Anchor bolts qty. | Motor | | Weight (kg) | |
|---------|------------|-------------|------------|------------------------------------|----------------|----------------|----------------|----------------|----------------|----------------|----------------|----------------|-------------------|-------|----------------|-------------|-------|
| | | | | b ₂ | G ₁ | G ₂ | l ₃ | l ₄ | h ₄ | h ₅ | h ₆ | h ₈ | | q | h ₇ | Base frame | Motor |
| 200-670 | 45 | 6 | 280S/M | 810 | 750 | 850 | 1760 | 780 | 419 | 1199 | 769 | 169 | 6 | 1101 | 410 | 178 | 640 |
| | 55 | 6 | 280S/M | 810 | 750 | 850 | 1760 | 780 | 419 | 1199 | 769 | 169 | 6 | 1101 | 410 | 178 | 665 |
| | 75 | 6 | 315S/M | 810 | 750 | 850 | 1890 | 845 | 419 | 1199 | 769 | 169 | 6 | 1274 | 436 | 194 | 920 |
| | 90 | 6 | 315S/M | 810 | 750 | 850 | 1890 | 845 | 419 | 1199 | 769 | 169 | 6 | 1274 | 436 | 194 | 990 |
| | 110 | 6 | 315S/M | 810 | 750 | 850 | 1890 | 845 | 419 | 1199 | 769 | 169 | 6 | 1274 | 436 | 194 | 1040 |
| | 132 | 6 | 315S/M | 810 | 750 | 850 | 1890 | 845 | 419 | 1199 | 769 | 169 | 6 | 1274 | 436 | 194 | 1100 |
| | 150 | 6 | 315L | 810 | 750 | 850 | 1890 | 845 | 419 | 1199 | 769 | 169 | 6 | 1385 | 436 | 194 | 1200 |
| | 160 | 6 | 315L | 810 | 750 | 850 | 1890 | 845 | 419 | 1199 | 769 | 169 | 6 | 1385 | 436 | 194 | 1230 |
| | 150 | 4 | 315S/M | 810 | 750 | 850 | 1890 | 845 | 419 | 1199 | 769 | 169 | 6 | 1274 | 436 | 194 | 1030 |
| 250-370 | 22 | 6 | 200L | 810 | 750 | 850 | 1540 | 670 | 469 | 1089 | 769 | 169 | 6 | 767 | 261 | 166 | 225 |
| | 30 | 6 | 225S/M | 810 | 750 | 850 | 1620 | 710 | 469 | 1089 | 769 | 169 | 6 | 886 | 315 | 170 | 380 |
| | 37 | 6 | 250S/M | 810 | 750 | 850 | 1680 | 740 | 469 | 1089 | 769 | 169 | 6 | 965 | 337 | 179 | 430 |
| | 45 | 6 | 280S/M | 810 | 750 | 850 | 1760 | 780 | 469 | 1089 | 769 | 169 | 6 | 1101 | 410 | 178 | 640 |
| | 55 | 6 | 280S/M | 810 | 750 | 850 | 1760 | 780 | 469 | 1089 | 769 | 169 | 6 | 1101 | 410 | 178 | 665 |
| | 75 | 4 | 280S/M | 810 | 750 | 850 | 1760 | 780 | 469 | 1089 | 769 | 169 | 6 | 1101 | 410 | 178 | 630 |
| | 90 | 4 | 280S/M | 810 | 750 | 850 | 1760 | 780 | 469 | 1089 | 769 | 169 | 6 | 1101 | 410 | 178 | 700 |
| | 110 | 4 | 280S/M | 810 | 750 | 850 | 1760 | 780 | 469 | 1089 | 769 | 169 | 6 | 1101 | 410 | 178 | 800 |
| | 132 | 4 | 315S/M | 810 | 750 | 850 | 1890 | 845 | 469 | 1089 | 769 | 169 | 6 | 1274 | 436 | 194 | 1010 |
| 250-480 | 150 | 4 | 315S/M | 810 | 750 | 850 | 1890 | 845 | 469 | 1089 | 769 | 169 | 6 | 1274 | 436 | 194 | 1030 |
| | 45 | 6 | 280S/M | 810 | 750 | 850 | 1900 | 850 | 469 | 1124 | 769 | 169 | 6 | 1101 | 410 | 191 | 640 |
| | 55 | 6 | 280S/M | 810 | 750 | 850 | 1900 | 850 | 469 | 1124 | 769 | 169 | 6 | 1101 | 410 | 191 | 665 |
| | 75 | 6 | 315S/M | 810 | 750 | 850 | 2020 | 910 | 469 | 1124 | 769 | 169 | 6 | 1274 | 436 | 202 | 920 |
| | 90 | 6 | 315S/M | 810 | 750 | 850 | 2020 | 910 | 469 | 1124 | 769 | 169 | 6 | 1274 | 436 | 202 | 990 |
| | 110 | 6 | 315S/M | 810 | 750 | 850 | 2020 | 910 | 469 | 1124 | 769 | 169 | 6 | 1274 | 436 | 202 | 1040 |
| | 110 | 4 | 280S/M | 810 | 750 | 850 | 1900 | 850 | 469 | 1124 | 769 | 169 | 6 | 1101 | 410 | 191 | 800 |
| | 132 | 4 | 315S/M | 810 | 750 | 850 | 2020 | 910 | 469 | 1124 | 769 | 169 | 6 | 1274 | 436 | 202 | 1010 |
| | 150 | 4 | 315S/M | 810 | 750 | 850 | 2020 | 910 | 469 | 1124 | 769 | 169 | 6 | 1274 | 436 | 202 | 1030 |

AW Coupling

| Size | Power (KW) | N° of poles | Frame size | Pump and baseplate dimensions (mm) | | | | | | | | | Anchor bolts qty. | Motor | | Weight (kg) | |
|---------|------------|-------------|------------|------------------------------------|----------------|----------------|----------------|----------------|----------------|----------------|----------------|----------------|-------------------|-------|----------------|-------------|-------|
| | | | | b ₂ | G ₁ | G ₂ | I ₃ | I ₄ | h ₄ | h ₅ | h ₆ | h ₈ | | q | h ₇ | Base frame | Motor |
| 200-670 | 45 | 6 | 280S/M | 810 | 750 | 850 | 1850 | 825 | 419 | 1199 | 769 | 169 | 6 | 1101 | 410 | 185 | 640 |
| | 55 | 6 | 280S/M | 810 | 750 | 850 | 1850 | 825 | 419 | 1199 | 769 | 169 | 6 | 1101 | 410 | 185 | 665 |
| | 75 | 6 | 315S/M | 810 | 750 | 850 | 1980 | 890 | 419 | 1199 | 769 | 169 | 6 | 1274 | 436 | 197 | 920 |
| | 90 | 6 | 315S/M | 810 | 750 | 850 | 1980 | 890 | 419 | 1199 | 769 | 169 | 6 | 1274 | 436 | 197 | 990 |
| | 110 | 6 | 315S/M | 810 | 750 | 850 | 1980 | 890 | 419 | 1199 | 769 | 169 | 6 | 1274 | 436 | 197 | 1040 |
| | 132 | 6 | 315S/M | 810 | 750 | 850 | 1980 | 890 | 419 | 1199 | 769 | 169 | 6 | 1274 | 436 | 197 | 1100 |
| | 150 | 6 | 315L | 810 | 750 | 850 | 1980 | 890 | 419 | 1199 | 769 | 169 | 6 | 1385 | 436 | 197 | 1200 |
| | 160 | 6 | 315L | 810 | 750 | 850 | 1980 | 890 | 419 | 1199 | 769 | 169 | 6 | 1385 | 436 | 197 | 1230 |
| | 150 | 4 | 315S/M | 810 | 750 | 850 | 1980 | 890 | 470 | 1250 | 820 | 169 | 6 | 1274 | 436 | 197 | 1030 |
| 250-370 | 22 | 6 | 200L | 810 | 750 | 850 | 1600 | 700 | 469 | 1089 | 769 | 169 | 6 | 767 | 261 | 167 | 225 |
| | 30 | 6 | 225S/M | 810 | 750 | 850 | 1680 | 740 | 469 | 1089 | 769 | 169 | 6 | 886 | 315 | 171 | 380 |
| | 37 | 6 | 250S/M | 810 | 750 | 850 | 1740 | 770 | 469 | 1089 | 769 | 169 | 6 | 965 | 337 | 181 | 430 |
| | 45 | 6 | 280S/M | 810 | 750 | 850 | 1850 | 825 | 469 | 1089 | 769 | 169 | 6 | 1101 | 410 | 185 | 640 |
| | 55 | 6 | 280S/M | 810 | 750 | 850 | 1850 | 825 | 469 | 1089 | 769 | 169 | 6 | 1101 | 410 | 185 | 665 |
| | 75 | 4 | 280S/M | 810 | 750 | 850 | 1850 | 825 | 469 | 1089 | 769 | 169 | 6 | 1101 | 410 | 185 | 630 |
| | 90 | 4 | 280S/M | 810 | 750 | 850 | 1850 | 825 | 469 | 1089 | 769 | 169 | 6 | 1101 | 410 | 185 | 700 |
| | 110 | 4 | 280S/M | 810 | 750 | 850 | 1850 | 825 | 469 | 1089 | 769 | 169 | 6 | 1101 | 410 | 185 | 800 |
| | '132 | 4 | 315S/M | 810 | 750 | 850 | 1980 | 890 | 469 | 1089 | 769 | 169 | 6 | 1274 | 436 | 197 | 1010 |
| 150 | 4 | 315S/M | 810 | 750 | 850 | 1980 | 890 | 469 | 1089 | 769 | 169 | 6 | 1274 | 436 | 197 | 1030 | |
| 250-480 | 45 | 6 | 280S/M | 810 | 750 | 850 | 1960 | 880 | 469 | 1124 | 769 | 169 | 6 | 1101 | 410 | 192 | 640 |
| | 55 | 6 | 280S/M | 810 | 750 | 850 | 1960 | 880 | 469 | 1124 | 769 | 169 | 6 | 1101 | 410 | 192 | 665 |
| | 75 | 6 | 315S/M | 810 | 750 | 850 | 2080 | 940 | 469 | 1124 | 769 | 169 | 6 | 1274 | 436 | 203 | 920 |
| | 90 | 6 | 315S/M | 810 | 750 | 850 | 2080 | 940 | 469 | 1124 | 769 | 169 | 6 | 1274 | 436 | 203 | 990 |
| | 110 | 6 | 315S/M | 810 | 750 | 850 | 2080 | 940 | 469 | 1124 | 769 | 169 | 6 | 1274 | 436 | 203 | 1040 |
| | 110 | 4 | 280S/M | 810 | 750 | 850 | 1960 | 880 | 469 | 1124 | 769 | 169 | 6 | 1101 | 410 | 192 | 800 |
| | 132 | 4 | 315S/M | 810 | 750 | 850 | 2080 | 940 | 469 | 1124 | 769 | 169 | 6 | 1274 | 436 | 203 | 1010 |
| | 150 | 4 | 315S/M | 810 | 750 | 850 | 2080 | 940 | 469 | 1124 | 769 | 169 | 6 | 1274 | 436 | 203 | 1030 |

3E

Omega 250-600 a 300-300



Anchor bolts dimensions: page 31

Permissible dimensional deviations for dimensions without tolerance indication:

- General: ISO 2768 CK
- Shaft centreline heights: DIN 747
- Welded parts: ISO 13920-B/F
- Flange position: ISO 8062-3-DCTG13
- Flanges: to the corresponding standard
- Keyway and key: DIN 6885, sheet 1
- Shaft diameter (coupling): DIN 7155-h₆

Information on installation:

This drawing is not true to scale; it serves as an example only. The dimensions apply to Weg W22 50 Hz motors (up to and including IEC 355M/L frame size). The piping must be connected without transmitting any stresses or strains. The pump must not be used as support for the piping. Pipes must be fastened without transmitting any forces, vibrations or pipe weight to the pump. Observe the limits for forces and moments at the suction nozzle and at the discharge nozzle. The pump must not be connected with unbraced expansion joints.

Grout all areas of the baseplates completely with non-shrinking concrete. Observe the required compressive strength class C25/30 of the concrete in exposure class XC1 as per EN 206-1.

Pump dimensions

| Size | Pump dimensions (mm) | | | | | | | | Weight (kg) | |
|---------|----------------------|----------------|-----|----------------|----------------|----------------|----------------|-----|-------------|------------|
| | a ₁ | a ₂ | f | h ₁ | h ₂ | h ₃ | l ₂ | z | Pump | Water fill |
| 250-600 | 650 | 550 | 730 | 630 | 350 | 420 | 515 | 420 | 1215 | 180 |
| 250-800 | 800 | 700 | 810 | 710 | 400 | 520 | 585 | 520 | 1900 | 150 |
| 300-300 | 550 | 500 | 655 | 630 | 300 | 360 | 464 | 360 | 870 | 150 |

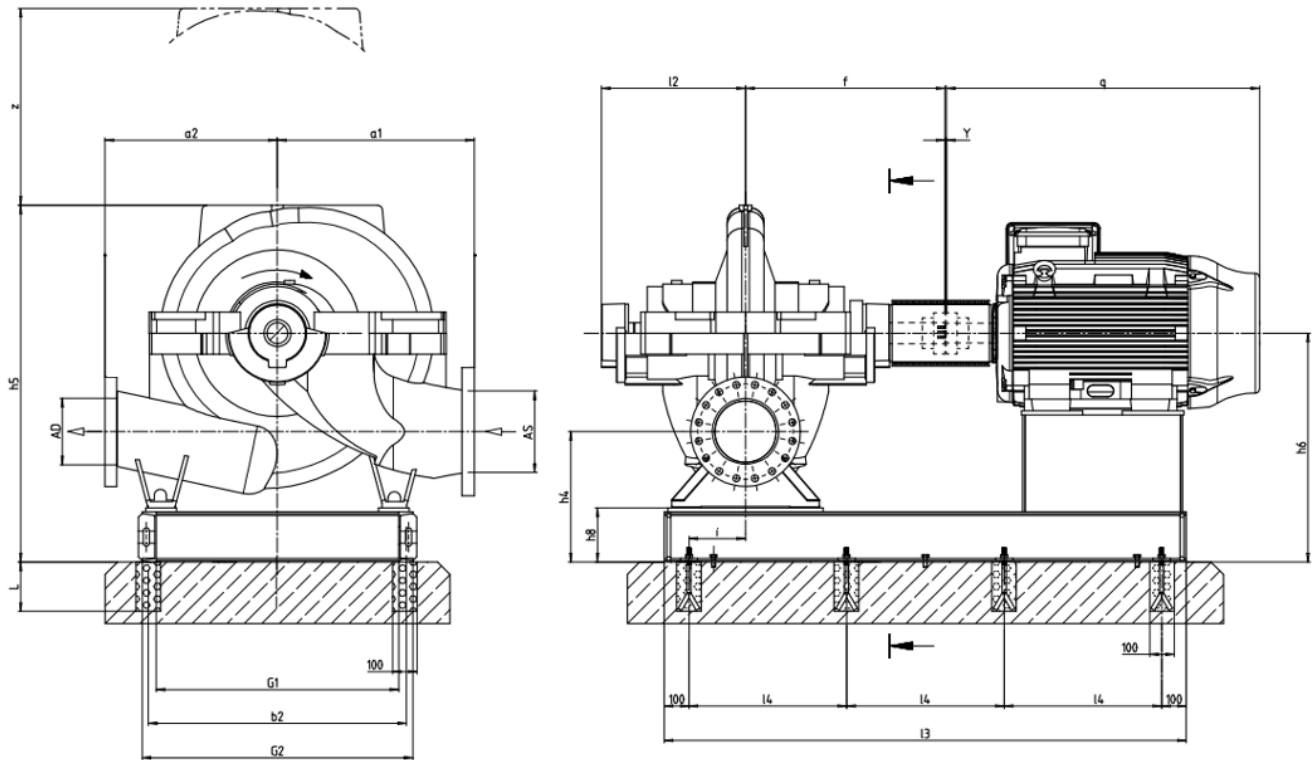
AE Coupling

| Size | Power (KW) | N° of poles | Frame size | Pump and baseplate dimensions (mm) | | | | | | | | | | Anchor bolts qty. | Motor | | Weight (kg) | |
|---------|------------|-------------|------------|------------------------------------|----------------|----------------|----------------|----------------|----------------|----------------|----------------|----------------|---|-------------------|----------------|------------|-------------|--|
| | | | | b ₂ | G ₁ | G ₂ | l ₃ | l ₄ | h ₄ | h ₅ | h ₆ | h ₈ | q | | h ₇ | Base frame | Motor | |
| 250-600 | 75 | 6 | 315S/M | 810 | 750 | 850 | 2020 | 910 | 419 | 1199 | 769 | 169 | 6 | 1274 | 436 | 204 | 920 | |
| | 90 | 6 | 315S/M | 810 | 750 | 850 | 2020 | 910 | 419 | 1199 | 769 | 169 | 6 | 1274 | 436 | 204 | 990 | |
| | 110 | 6 | 315S/M | 810 | 750 | 850 | 2020 | 910 | 419 | 1199 | 769 | 169 | 6 | 1274 | 436 | 204 | 1040 | |
| | 132 | 6 | 315S/M | 810 | 750 | 850 | 2020 | 910 | 419 | 1199 | 769 | 169 | 6 | 1274 | 436 | 204 | 1100 | |
| | 150 | 6 | 315L | 810 | 750 | 850 | 2020 | 910 | 419 | 1199 | 769 | 169 | 6 | 1385 | 436 | 204 | 1200 | |
| | 160 | 6 | 315L | 810 | 750 | 850 | 2020 | 910 | 419 | 1199 | 769 | 169 | 6 | 1385 | 436 | 204 | 1230 | |
| | 185 | 6 | 355M/L | 800 | 735 | 850 | 2260 | 1030 | 470 | 1250 | 820 | 220 | 6 | 1482 | 537 | 262 | 1550 | |
| | 200 | 4 | 355M/L | 800 | 735 | 850 | 2260 | 1030 | 470 | 1250 | 820 | 220 | 6 | 1482 | 537 | 262 | 1495 | |
| | 250 | 4 | 355M/L | 800 | 735 | 850 | 2260 | 1030 | 470 | 1250 | 820 | 220 | 6 | 1482 | 537 | 262 | 1550 | |
| | 260 | 4 | 355M/L | 800 | 735 | 850 | 2260 | 1030 | 470 | 1250 | 820 | 220 | 6 | 1482 | 537 | 262 | 1550 | |
| | 280 | 4 | 355M/L | 800 | 735 | 850 | 2260 | 1030 | 470 | 1250 | 820 | 220 | 6 | 1482 | 537 | 262 | 1600 | |
| | 315 | 4 | 355M/L | 800 | 735 | 850 | 2260 | 1030 | 470 | 1250 | 820 | 220 | 6 | 1482 | 537 | 262 | 1750 | |
| 250-800 | 160 | 6 | 315L | 1050 | 985 | 1100 | 2120 | 640 | 530 | 1450 | 930 | 220 | 8 | 1355 | 436 | 305 | 1230 | |
| | 200 | 6 | 355M/L | 1050 | 985 | 1100 | 2345 | 715 | 530 | 1450 | 930 | 220 | 8 | 1482 | 537 | 348 | 1620 | |
| | 220 | 6 | 355M/L | 1050 | 985 | 1100 | 2345 | 715 | 530 | 1450 | 930 | 220 | 8 | 1482 | 537 | 348 | 1710 | |
| | 250 | 6 | 355M/L | 1050 | 985 | 1100 | 2345 | 715 | 530 | 1450 | 930 | 220 | 8 | 1482 | 537 | 348 | 1830 | |
| | 260 | 6 | 355M/L | 1050 | 985 | 1100 | 2345 | 715 | 530 | 1450 | 930 | 220 | 8 | 1482 | 537 | 348 | 1830 | |
| | 280 | 6 | 355M/L | 1050 | 985 | 1100 | 2345 | 715 | 530 | 1450 | 930 | 220 | 8 | 1482 | 537 | 348 | 1970 | |
| | 300 | 6 | 355M/L | 1050 | 985 | 1100 | 2345 | 715 | 530 | 1450 | 930 | 220 | 8 | 1482 | 537 | 348 | 2493 | |
| | 315 | 6 | 355M/L | 1050 | 985 | 1100 | 2345 | 715 | 530 | 1450 | 930 | 220 | 8 | 1482 | 537 | 348 | 2493 | |
| 300-300 | 15 | 6 | 180L | 820 | 770 | 850 | 1500 | 650 | 448 | 1108 | 748 | 118 | 6 | 702 | 230 | 162 | 185 | |
| | 18,5 | 6 | 200L | 820 | 770 | 850 | 1540 | 670 | 448 | 1108 | 748 | 118 | 6 | 767 | 261 | 144 | 215 | |
| | 22 | 6 | 200L | 820 | 770 | 850 | 1540 | 670 | 448 | 1108 | 748 | 118 | 6 | 767 | 261 | 144 | 225 | |
| | 30 | 6 | 225S/M | 820 | 770 | 850 | 1620 | 710 | 448 | 1108 | 748 | 118 | 6 | 886 | 315 | 147 | 380 | |
| | 55 | 4 | 250S/M | 820 | 770 | 850 | 1680 | 740 | 448 | 1108 | 748 | 118 | 6 | 965 | 337 | 157 | 500 | |
| | 75 | 4 | 280S/M | 810 | 750 | 850 | 1760 | 780 | 499 | 1159 | 799 | 169 | 6 | 1101 | 410 | 189 | 630 | |
| | 90 | 4 | 280S/M | 810 | 750 | 850 | 1760 | 780 | 499 | 1159 | 799 | 169 | 6 | 1101 | 410 | 189 | 700 | |
| | 110 | 4 | 280S/M | 810 | 750 | 850 | 1760 | 780 | 499 | 1159 | 799 | 169 | 6 | 1101 | 410 | 189 | 800 | |
| | 132 | 4 | 315S/M | 810 | 750 | 850 | 1900 | 850 | 499 | 1159 | 799 | 169 | 6 | 1274 | 436 | 201 | 1010 | |

AW Coupling

| Size | Power (KW) | Nº of poles | Frame size | Pump and baseplate dimensions (mm) | | | | | | | | | | Anchor bolts qty. | Motor | | Weight (kg) | |
|---------|------------|-------------|------------|------------------------------------|----------------|----------------|----------------|----------------|----------------|----------------|----------------|----------------|---|----------------------|----------------|---------------|-------------|--|
| | | | | b ₂ | G ₁ | G ₂ | I ₃ | I ₄ | h ₄ | h ₅ | h ₆ | h ₈ | q | | h ₇ | Base frame | Motor | |
| 250-600 | 75 | 6 | 315S/M | 810 | 750 | 850 | 2080 | 940 | 419 | 1199 | 769 | 169 | 6 | 1274 | 436 | 206 | 920 | |
| | 90 | 6 | 315S/M | 810 | 750 | 850 | 2080 | 940 | 419 | 1199 | 769 | 169 | 6 | 1274 | 436 | 206 | 990 | |
| | 110 | 6 | 315S/M | 810 | 750 | 850 | 2080 | 940 | 419 | 1199 | 769 | 169 | 6 | 1274 | 436 | 206 | 1040 | |
| | 132 | 6 | 315S/M | 810 | 750 | 850 | 2080 | 940 | 419 | 1199 | 769 | 169 | 6 | 1274 | 436 | 206 | 1100 | |
| | 150 | 6 | 315L | 810 | 750 | 850 | 2080 | 940 | 419 | 1199 | 769 | 169 | 6 | 1385 | 436 | 206 | 1200 | |
| | 160 | 6 | 315L | 810 | 750 | 850 | 2080 | 940 | 419 | 1199 | 769 | 169 | 6 | 1385 | 436 | 206 | 1230 | |
| | 185 | 6 | 355M/L | 800 | 735 | 850 | 2345 | 715 | 470 | 1250 | 820 | 220 | 8 | 1482 | 537 | 265 | 1550 | |
| | 200 | 4 | 355M/L | 800 | 735 | 850 | 2345 | 715 | 470 | 1250 | 820 | 220 | 8 | 1482 | 537 | 265 | 1495 | |
| | 250 | 4 | 355M/L | 800 | 735 | 850 | 2345 | 715 | 470 | 1250 | 820 | 220 | 8 | 1482 | 537 | 265 | 1550 | |
| | 260 | 4 | 355M/L | 800 | 735 | 850 | 2345 | 715 | 470 | 1250 | 820 | 220 | 8 | 1482 | 537 | 265 | 1550 | |
| | 280 | 4 | 355M/L | 800 | 735 | 850 | 2345 | 715 | 470 | 1250 | 820 | 220 | 8 | 1482 | 537 | 265 | 1600 | |
| | 315 | 4 | 355M/L | 800 | 735 | 850 | 2345 | 715 | 470 | 1250 | 820 | 220 | 8 | 1482 | 537 | 265 | 1750 | |
| 250-800 | 160 | 6 | 315L | 1050 | 985 | 1100 | 2180 | 660 | 530 | 1450 | 930 | 169 | 8 | 1355 | 436 | 287 | 1230 | |
| | 200 | 6 | 355M/L | 1050 | 985 | 1100 | 2345 | 745 | 530 | 1450 | 930 | 220 | 8 | 1482 | 537 | 308 | 1620 | |
| | 220 | 6 | 355M/L | 1050 | 985 | 1100 | 2345 | 745 | 530 | 1450 | 930 | 220 | 8 | 1482 | 537 | 308 | 1710 | |
| | 250 | 6 | 355M/L | 1050 | 985 | 1100 | 2345 | 745 | 530 | 1450 | 930 | 220 | 8 | 1482 | 537 | 308 | 1830 | |
| | 260 | 6 | 355M/L | 1050 | 985 | 1100 | 2345 | 745 | 530 | 1450 | 930 | 220 | 8 | 1482 | 537 | 308 | 1830 | |
| | 280 | 6 | 355M/L | 1050 | 985 | 1100 | 2345 | 745 | 530 | 1450 | 930 | 220 | 8 | 1482 | 537 | 308 | 1970 | |
| | 300 | 6 | 355M/L | 1050 | 985 | 1100 | 2345 | 745 | 530 | 1450 | 930 | 220 | 8 | 1482 | 537 | 308 | 2493 | |
| | 315 | 6 | 355M/L | 1050 | 985 | 1100 | 2345 | 745 | 530 | 1450 | 930 | 220 | 8 | 1482 | 537 | 308 | 2493 | |
| 300-300 | 15 | 6 | 180L | 820 | 770 | 850 | 1560 | 680 | 448 | 1108 | 748 | 118 | 6 | 702 | 230 | 163 | 185 | |
| | 18,5 | 6 | 200L | 820 | 770 | 850 | 1600 | 700 | 448 | 1108 | 748 | 118 | 6 | 767 | 261 | 145 | 215 | |
| | 22 | 6 | 200L | 820 | 770 | 850 | 1600 | 700 | 448 | 1108 | 748 | 118 | 6 | 767 | 261 | 145 | 225 | |
| | 30 | 6 | 225S/M | 820 | 770 | 850 | 1680 | 740 | 448 | 1108 | 748 | 118 | 6 | 886 | 315 | 148 | 380 | |
| | 55 | 4 | 250S/M | 820 | 770 | 850 | 1740 | 770 | 448 | 1108 | 748 | 118 | 6 | 965 | 337 | 158 | 500 | |
| | 75 | 4 | 280S/M | 810 | 750 | 850 | 1820 | 810 | 499 | 1159 | 799 | 169 | 6 | 1101 | 410 | 190 | 630 | |
| | 90 | 4 | 280S/M | 810 | 750 | 850 | 1820 | 810 | 499 | 1159 | 799 | 169 | 6 | 1101 | 410 | 190 | 700 | |
| | 110 | 4 | 280S/M | 810 | 750 | 850 | 1820 | 810 | 499 | 1159 | 799 | 169 | 6 | 1101 | 410 | 190 | 800 | |
| | 132 | 4 | 315S/M | 810 | 750 | 850 | 1960 | 880 | 499 | 1159 | 799 | 169 | 6 | 1274 | 436 | 203 | 1010 | |

Omega 300-435 a 300-700



Anchor bolts dimensions: page 31

Permissible dimensional deviations for dimensions without tolerance indication:

- General: ISO 2768 CK
- Shaft centreline heights: DIN 747
- Welded parts: ISO 13920-B/F
- Flange position: ISO 8062-3-DCTG13
- Flanges: to the corresponding standard
- Keyway and key: DIN 6885, sheet 1
- Shaft diameter (coupling): DIN 7155-h₆

Information on installation:

This drawing is not true to scale; it serves as an example only. The dimensions apply to Weg W22 50 Hz motors (up to and including IEC 355M/L frame size). The piping must be connected without transmitting any stresses or strains. The pump must not be used as support for the piping. Pipes must be fastened without transmitting any forces, vibrations or pipe weight to the pump. Observe the limits for forces and moments at the suction nozzle and at the discharge nozzle. The pump must not be connected with unbraced expansion joints.

Grout all areas of the baseplates completely with non-shrinking concrete. Observe the required compressive strength class C25/30 of the concrete in exposure class XC1 as per EN 206-1.

Pump dimensions

| Size | Pump dimensions (mm) | | | | | | | | Weight (kg) | |
|---------|----------------------|----------------|-----|----------------|----------------|----------------|----------------|-----|-------------|------------|
| | a ₁ | a ₂ | f | h ₁ | h ₂ | h ₃ | l ₂ | z | Pump | Water fill |
| 300-435 | 650 | 550 | 730 | 670 | 350 | 365 | 515 | 365 | 905 | 190 |
| 300-560 | 700 | 650 | 810 | 710 | 350 | 430 | 585 | 430 | 1425 | 225 |
| 300-700 | 750 | 650 | 810 | 750 | 400 | 485 | 585 | 485 | 1690 | 275 |

AE Coupling

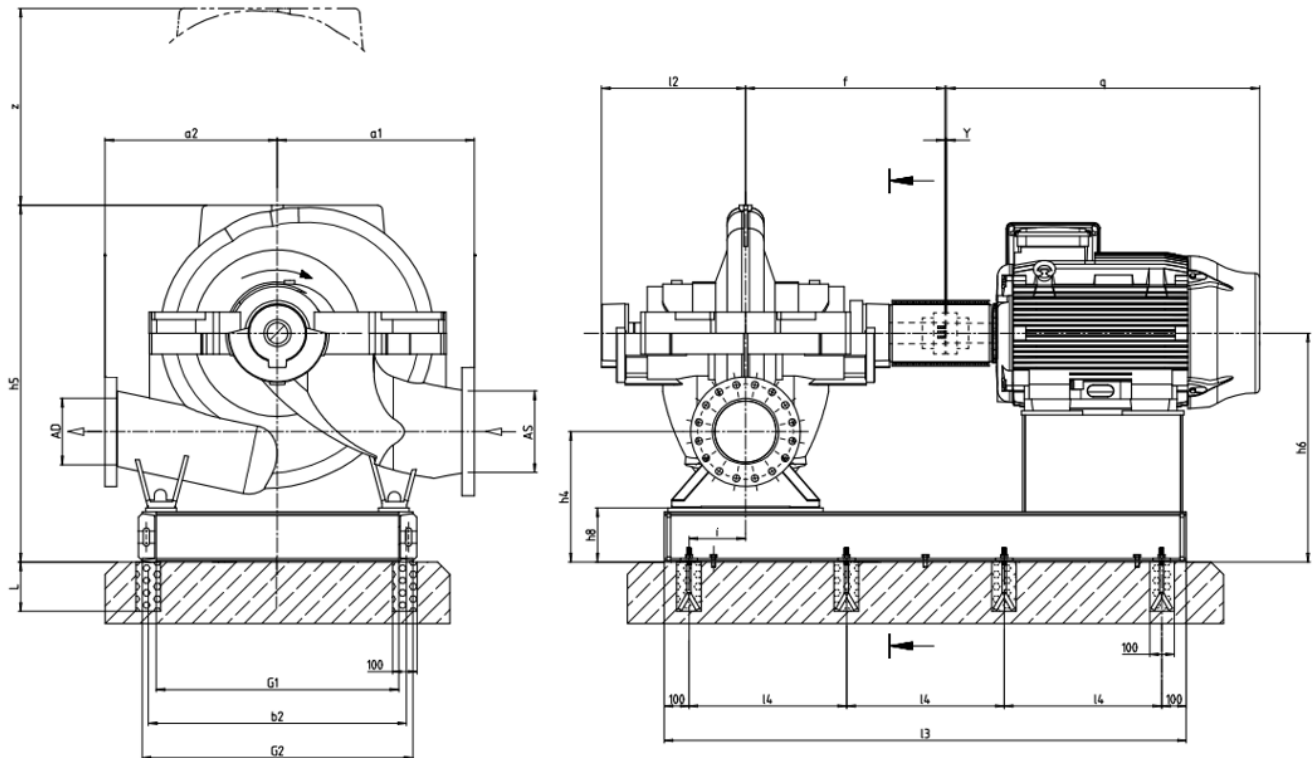
| Size | Power (KW) | N° of poles | Frame size | Pump and baseplate dimensions (mm) | | | | | | | | | Anchor bolts qty. | Motor | | Weight (kg) | |
|---------|------------|-------------|------------|------------------------------------|----------------|----------------|----------------|----------------|----------------|----------------|----------------|----------------|-------------------|-------|----------------|-------------|-------|
| | | | | b ₂ | G ₁ | G ₂ | l ₃ | l ₄ | h ₄ | h ₅ | h ₆ | h ₈ | | q | h ₇ | Base frame | Motor |
| 300-435 | 45 | 6 | 280S/M | 810 | 750 | 850 | 1900 | 850 | 489 | 1204 | 839 | 169 | 6 | 1101 | 410 | 204 | 640 |
| | 55 | 6 | 280S/M | 810 | 750 | 850 | 1900 | 850 | 489 | 1204 | 839 | 169 | 6 | 1101 | 410 | 204 | 665 |
| | 75 | 6 | 315S/M | 810 | 750 | 850 | 2020 | 910 | 489 | 1204 | 839 | 169 | 6 | 1274 | 436 | 214 | 920 |
| | 90 | 6 | 315S/M | 810 | 750 | 850 | 2020 | 910 | 489 | 1204 | 839 | 169 | 6 | 1274 | 436 | 214 | 990 |
| | 110 | 6 | 315S/M | 810 | 750 | 850 | 2020 | 910 | 489 | 1204 | 839 | 169 | 6 | 1274 | 436 | 214 | 1040 |
| | 200 | 4 | 355M/L | 800 | 735 | 850 | 2270 | 690 | 540 | 1255 | 890 | 220 | 8 | 1274 | 537 | 274 | 1495 |
| | 220 | 4 | 355M/L | 800 | 735 | 850 | 2270 | 690 | 540 | 1255 | 890 | 220 | 8 | 1274 | 537 | 274 | 1495 |
| | 250 | 4 | 355M/L | 800 | 735 | 850 | 2270 | 690 | 540 | 1255 | 890 | 220 | 8 | 1274 | 537 | 274 | 1550 |
| | 260 | 4 | 355M/L | 800 | 735 | 850 | 2270 | 690 | 540 | 1255 | 890 | 220 | 8 | 1274 | 537 | 274 | 1550 |
| | 280 | 4 | 355M/L | 800 | 735 | 850 | 2270 | 690 | 540 | 1255 | 890 | 220 | 8 | 1274 | 537 | 274 | 1600 |
| 300 | 4 | 355M/L | 800 | 735 | 850 | 2270 | 690 | 540 | 1255 | 890 | 220 | 8 | 1274 | 537 | 274 | 1750 | |
| 300-560 | 90 | 6 | 315S/M | 1050 | 985 | 1100 | 2120 | 640 | 529 | 1309 | 879 | 220 | 8 | 1274 | 436 | 285 | 990 |
| | 110 | 6 | 315S/M | 1050 | 985 | 1100 | 2120 | 640 | 529 | 1309 | 879 | 220 | 8 | 1274 | 436 | 285 | 1040 |
| | 132 | 6 | 315S/M | 1050 | 985 | 1100 | 2120 | 640 | 529 | 1309 | 879 | 220 | 8 | 1274 | 436 | 285 | 1100 |
| | 150 | 6 | 315L | 1050 | 985 | 1100 | 2120 | 640 | 529 | 1309 | 879 | 220 | 8 | 1385 | 436 | 285 | 1200 |
| | 160 | 6 | 315L | 1050 | 985 | 1100 | 2120 | 640 | 529 | 1309 | 879 | 220 | 8 | 1385 | 436 | 285 | 1230 |
| | 185 | 6 | 355M/L | 1050 | 985 | 1100 | 2345 | 715 | 580 | 1360 | 930 | 220 | 8 | 1482 | 537 | 305 | 1550 |
| | 200 | 6 | 355M/L | 1050 | 985 | 1100 | 2345 | 715 | 580 | 1360 | 930 | 220 | 8 | 1482 | 537 | 305 | 1620 |
| | 220 | 6 | 355M/L | 1050 | 985 | 1100 | 2345 | 715 | 580 | 1360 | 930 | 220 | 8 | 1482 | 537 | 305 | 1710 |
| | 220 | 4 | 355M/L | 1050 | 985 | 1100 | 2345 | 715 | 580 | 1360 | 930 | 220 | 8 | 1482 | 537 | 305 | 1510 |
| | 250 | 4 | 355M/L | 1050 | 985 | 1100 | 2345 | 715 | 580 | 1360 | 930 | 220 | 8 | 1482 | 537 | 305 | 1550 |
| | 260 | 4 | 355M/L | 1050 | 985 | 1100 | 2345 | 715 | 580 | 1360 | 930 | 220 | 8 | 1482 | 537 | 305 | 1550 |
| | 280 | 4 | 355M/L | 1050 | 985 | 1100 | 2345 | 715 | 580 | 1360 | 930 | 220 | 8 | 1482 | 537 | 305 | 1600 |
| 300 | 4 | 355M/L | 1050 | 985 | 1100 | 2345 | 715 | 580 | 1360 | 930 | 220 | 8 | 1482 | 537 | 305 | 1560 | |
| 300-700 | 150 | 6 | 315L | 1060 | 1000 | 1100 | 2100 | 640 | 519 | 1404 | 919 | 169 | 8 | 1385 | 436 | 251 | 1200 |
| | 160 | 6 | 315L | 1060 | 1000 | 1100 | 2100 | 640 | 519 | 1404 | 919 | 169 | 8 | 1385 | 436 | 251 | 1230 |
| | 185 | 6 | 355M/L | 1050 | 985 | 1100 | 2345 | 715 | 570 | 1455 | 970 | 220 | 8 | 1482 | 537 | 316 | 1550 |
| | 200 | 6 | 355M/L | 1050 | 985 | 1100 | 2345 | 715 | 570 | 1455 | 970 | 220 | 8 | 1482 | 537 | 316 | 1620 |
| | 220 | 6 | 355M/L | 1050 | 985 | 1100 | 2345 | 715 | 570 | 1455 | 970 | 220 | 8 | 1482 | 537 | 316 | 1710 |
| | 250 | 6 | 355M/L | 1050 | 985 | 1100 | 2345 | 715 | 570 | 1455 | 970 | 220 | 8 | 1482 | 537 | 316 | 1830 |
| | 260 | 6 | 355M/L | 1050 | 985 | 1100 | 2345 | 715 | 570 | 1455 | 970 | 220 | 8 | 1482 | 537 | 316 | 1830 |
| | 280 | 6 | 355M/L | 1050 | 985 | 1100 | 2345 | 715 | 570 | 1455 | 970 | 220 | 8 | 1482 | 537 | 316 | 1970 |
| | 300 | 6 | 355M/L | 1050 | 985 | 1100 | 2345 | 715 | 570 | 1455 | 970 | 220 | 8 | 1482 | 537 | 316 | 2493 |
| | 315 | 6 | 355A/B | 1050 | 985 | 1100 | 2540 | 780 | 570 | 1455 | 970 | 220 | 8 | 1677 | 588 | 362 | 2493 |
| | 355 | 6 | 355A/B | 1050 | 985 | 1100 | 2540 | 780 | 570 | 1455 | 970 | 220 | 8 | 1677 | 588 | 362 | 2200 |
| | 370 | 6 | 355A/B | 1050 | 985 | 1100 | 2540 | 780 | 570 | 1455 | 970 | 220 | 8 | 1677 | 588 | 362 | 2300 |

AW Coupling

| Size | Power (KW) | N° of poles | Frame size | Pump and baseplate dimensions (mm) | | | | | | | | | | Anchor bolts qty. | Motor | | Weight (kg) | |
|---------|------------|-------------|------------|------------------------------------|----------------|----------------|----------------|----------------|----------------|----------------|----------------|----------------|------|----------------------|----------------|---------------|-------------|--|
| | | | | b ₂ | G ₁ | G ₂ | l ₃ | l ₄ | h ₄ | h ₅ | h ₆ | h ₈ | q | | h ₇ | Base frame | Motor | |
| 300-435 | 45 | 6 | 280S/M | 810 | 750 | 850 | 1960 | 880 | 489 | 1204 | 839 | 169 | 6 | 1101 | 410 | 206 | 640 | |
| | 55 | 6 | 280S/M | 810 | 750 | 850 | 1960 | 880 | 489 | 1204 | 839 | 169 | 6 | 1101 | 410 | 206 | 665 | |
| | 75 | 6 | 315S/M | 810 | 750 | 850 | 2110 | 640 | 489 | 1204 | 839 | 169 | 6 | 1274 | 436 | 217 | 920 | |
| | 90 | 6 | 315S/M | 810 | 750 | 850 | 2110 | 640 | 489 | 1204 | 839 | 169 | 6 | 1274 | 436 | 217 | 990 | |
| | 110 | 6 | 315S/M | 810 | 750 | 850 | 2110 | 640 | 489 | 1204 | 839 | 169 | 6 | 1274 | 436 | 217 | 1040 | |
| | 200 | 4 | 355M/L | 800 | 750 | 850 | 2360 | 720 | 540 | 1255 | 890 | 220 | 8 | 1274 | 537 | 278 | 1495 | |
| | 220 | 4 | 355M/L | 800 | 750 | 850 | 2360 | 720 | 540 | 1255 | 890 | 220 | 8 | 1274 | 537 | 278 | 1495 | |
| | 250 | 4 | 355M/L | 800 | 750 | 850 | 2360 | 720 | 540 | 1255 | 890 | 220 | 8 | 1274 | 537 | 278 | 1550 | |
| | 260 | 4 | 355M/L | 800 | 750 | 850 | 2360 | 720 | 540 | 1255 | 890 | 220 | 8 | 1274 | 537 | 278 | 1550 | |
| | 280 | 4 | 355M/L | 800 | 750 | 850 | 2360 | 720 | 540 | 1255 | 890 | 220 | 8 | 1274 | 537 | 278 | 1600 | |
| | 300 | 4 | 355M/L | 800 | 750 | 850 | 2360 | 720 | 540 | 1255 | 890 | 220 | 8 | 1274 | 537 | 278 | 1750 | |
| 300-560 | 90 | 6 | 315S/M | 1050 | 985 | 1100 | 2180 | 660 | 529 | 1309 | 879 | 220 | 8 | 1274 | 436 | 287 | 990 | |
| | 110 | 6 | 315S/M | 1050 | 985 | 1100 | 2180 | 660 | 529 | 1309 | 879 | 220 | 8 | 1274 | 436 | 287 | 1040 | |
| | 132 | 6 | 315S/M | 1050 | 985 | 1100 | 2180 | 660 | 529 | 1309 | 879 | 220 | 8 | 1274 | 436 | 287 | 1100 | |
| | 150 | 6 | 315L | 1050 | 985 | 1100 | 2180 | 660 | 529 | 1309 | 879 | 220 | 8 | 1385 | 436 | 287 | 1200 | |
| | 160 | 6 | 315L | 1050 | 985 | 1100 | 2180 | 660 | 529 | 1309 | 879 | 169 | 8 | 1385 | 436 | 287 | 1230 | |
| | 185 | 6 | 355M/L | 1050 | 985 | 1100 | 2435 | 745 | 580 | 1360 | 930 | 220 | 8 | 1482 | 537 | 308 | 1550 | |
| | 200 | 6 | 355M/L | 1050 | 985 | 1100 | 2435 | 745 | 580 | 1360 | 930 | 220 | 8 | 1482 | 537 | 308 | 1620 | |
| | 220 | 6 | 355M/L | 1050 | 985 | 1100 | 2435 | 745 | 580 | 1360 | 930 | 220 | 8 | 1482 | 537 | 308 | 1710 | |
| | 220 | 4 | 355M/L | 1050 | 985 | 1100 | 2435 | 745 | 580 | 1360 | 930 | 220 | 8 | 1482 | 537 | 308 | 1510 | |
| | 250 | 4 | 355M/L | 1050 | 985 | 1100 | 2435 | 745 | 580 | 1360 | 930 | 220 | 8 | 1482 | 537 | 308 | 1550 | |
| | 260 | 4 | 355M/L | 1050 | 985 | 1100 | 2435 | 745 | 580 | 1360 | 930 | 220 | 8 | 1482 | 537 | 308 | 1550 | |
| | 280 | 4 | 355M/L | 1050 | 985 | 1100 | 2435 | 745 | 580 | 1360 | 930 | 220 | 8 | 1482 | 537 | 308 | 1600 | |
| 300 | 4 | 355M/L | 1050 | 985 | 1100 | 2435 | 745 | 580 | 1360 | 930 | 220 | 8 | 1482 | 537 | 308 | 1560 | | |
| 300-700 | 150 | 6 | 315L | 1060 | 1000 | 1100 | 2160 | 660 | 519 | 1404 | 919 | 169 | 8 | 1385 | 436 | 252 | 1200 | |
| | 160 | 6 | 315L | 1060 | 1000 | 1100 | 2160 | 660 | 519 | 1404 | 919 | 169 | 8 | 1385 | 436 | 252 | 1230 | |
| | 185 | 6 | 355M/L | 1050 | 985 | 1100 | 2435 | 745 | 570 | 1455 | 970 | 220 | 8 | 1482 | 537 | 319 | 1550 | |
| | 200 | 6 | 355M/L | 1050 | 985 | 1100 | 2435 | 745 | 570 | 1455 | 970 | 220 | 8 | 1482 | 537 | 319 | 1620 | |
| | 220 | 6 | 355M/L | 1050 | 985 | 1100 | 2435 | 745 | 570 | 1455 | 970 | 220 | 8 | 1482 | 537 | 319 | 1710 | |
| | 250 | 6 | 355M/L | 1050 | 985 | 1100 | 2435 | 745 | 570 | 1455 | 970 | 220 | 8 | 1482 | 537 | 319 | 1830 | |
| | 260 | 6 | 355M/L | 1050 | 985 | 1100 | 2435 | 745 | 570 | 1455 | 970 | 220 | 8 | 1482 | 537 | 319 | 1830 | |
| | 280 | 6 | 355M/L | 1050 | 985 | 1100 | 2435 | 745 | 570 | 1455 | 970 | 220 | 8 | 1482 | 537 | 319 | 1970 | |
| | 300 | 6 | 355M/L | 1050 | 985 | 1100 | 2435 | 745 | 570 | 1455 | 970 | 220 | 8 | 1482 | 537 | 319 | 2493 | |
| | 315 | 6 | 355A/B | 1050 | 985 | 1100 | 2435 | 745 | 570 | 1455 | 970 | 220 | 8 | 1677 | 588 | 367 | 2493 | |
| | 355 | 6 | 355A/B | 1050 | 985 | 1100 | 2435 | 745 | 570 | 1455 | 970 | 220 | 8 | 1677 | 588 | 367 | 2200 | |
| | 370 | 6 | 355A/B | 1050 | 985 | 1100 | 2435 | 745 | 570 | 1455 | 970 | 220 | 8 | 1677 | 588 | 367 | 2300 | |

3E

Omega 350-360 a 350-510



Anchor bolts dimensions: page 31

Permissible dimensional deviations for dimensions without tolerance indication:

- General: ISO 2768 CK
- Shaft centreline heights: DIN 747
- Welded parts: ISO 13920-B/F
- Flange position: ISO 8062-3-DCTG13
- Flanges: to the corresponding standard
- Keyway and key: DIN 6885, sheet 1
- Shaft diameter (coupling): DIN 7155-h₆

Information on installation:

This drawing is not true to scale; it serves as an example only. The dimensions apply to Weg W22 50 Hz motors (up to and including IEC 355M/L frame size). The piping must be connected without transmitting any stresses or strains. The pump must not be used as support for the piping. Pipes must be fastened without transmitting any forces, vibrations or pipe weight to the pump. Observe the limits for forces and moments at the suction nozzle and at the discharge nozzle. The pump must not be connected with unbraced expansion joints.

Grout all areas of the baseplates completely with non-shrinking concrete. Observe the required compressive strength class C25/30 of the concrete in exposure class XC1 as per EN 206-1.

Pump dimensions

| Size | Pump dimensions (mm) | | | | | | | | Weight (kg) | |
|---------|----------------------|----------------|-----|----------------|----------------|----------------|----------------|-----|-------------|------------|
| | a ₁ | a ₂ | f | h ₁ | h ₂ | h ₃ | l ₂ | z | Pump | Water fill |
| 350-360 | 650 | 550 | 730 | 670 | 350 | 410 | 515 | 410 | 1100 | 230 |
| 350-430 | 750 | 650 | 810 | 750 | 400 | 465 | 585 | 465 | 1434 | 240 |
| 350-510 | 700 | 650 | 810 | 750 | 400 | 420 | 585 | 420 | 1395 | 290 |

AE Coupling

| Size | Power (KW) | Nº of poles | Frame size | Pump and baseplate dimensions (mm) | | | | | | | | | Anchor bolts qty. | Motor | | Weight (kg) | |
|---------|------------|-------------|------------|------------------------------------|----------------|----------------|----------------|----------------|----------------|----------------|----------------|----------------|-------------------|-------|----------------|-------------|-------|
| | | | | b ₂ | G ₁ | G ₂ | l ₃ | l ₄ | h ₄ | h ₅ | h ₆ | h ₈ | | q | h ₇ | Base frame | Motor |
| 350-360 | 22 | 6 | 200L | 820 | 750 | 850 | 1680 | 740 | 438 | 1198 | 788 | 118 | 6 | 767 | 261 | 156 | 225 |
| | 30 | 6 | 225S/M | 810 | 750 | 850 | 1750 | 775 | 489 | 1249 | 839 | 169 | 6 | 886 | 315 | 188 | 380 |
| | 37 | 6 | 250S/M | 810 | 750 | 850 | 1820 | 810 | 489 | 1249 | 839 | 169 | 6 | 965 | 337 | 200 | 430 |
| | 45 | 6 | 280S/M | 810 | 750 | 850 | 1900 | 850 | 489 | 1249 | 839 | 169 | 6 | 1101 | 410 | 204 | 640 |
| | 55 | 6 | 280S/M | 810 | 750 | 850 | 1900 | 850 | 489 | 1249 | 839 | 169 | 6 | 1101 | 410 | 204 | 665 |
| | 75 | 6 | 315S/M | 810 | 750 | 850 | 2020 | 910 | 489 | 1249 | 839 | 169 | 6 | 1274 | 436 | 214 | 920 |
| | 75 | 4 | 280S/M | 810 | 750 | 850 | 1900 | 850 | 489 | 1249 | 839 | 169 | 6 | 1101 | 410 | 204 | 630 |
| | 110 | 4 | 280S/M | 810 | 750 | 850 | 1900 | 850 | 489 | 1249 | 839 | 169 | 6 | 1101 | 410 | 204 | 800 |
| | 200 | 4 | 355M/L | 800 | 735 | 850 | 2270 | 690 | 540 | 1300 | 890 | 220 | 8 | 1482 | 537 | 274 | 1495 |
| 350-430 | 55 | 6 | 280S/M | 1060 | 1000 | 1100 | 1980 | 890 | 519 | 1384 | 919 | 169 | 6 | 1101 | 410 | 234 | 665 |
| | 75 | 6 | 315S/M | 1060 | 1000 | 1100 | 2100 | 640 | 519 | 1384 | 919 | 169 | 8 | 1274 | 436 | 251 | 920 |
| | 90 | 6 | 315S/M | 1060 | 1000 | 1100 | 2100 | 640 | 519 | 1384 | 919 | 169 | 8 | 1274 | 436 | 251 | 990 |
| | 110 | 6 | 315S/M | 1060 | 1000 | 1100 | 2100 | 640 | 519 | 1384 | 919 | 169 | 8 | 1274 | 436 | 251 | 1040 |
| | 160 | 4 | 315S/M | 1060 | 1000 | 1100 | 2100 | 640 | 519 | 1384 | 919 | 169 | 8 | 1274 | 436 | 251 | 1080 |
| | 185 | 4 | 315S/M | 1060 | 1000 | 1100 | 2100 | 640 | 519 | 1384 | 919 | 169 | 8 | 1274 | 436 | 251 | 1150 |
| | 200 | 4 | 355M/L | 1050 | 985 | 1100 | 2345 | 715 | 570 | 1435 | 970 | 220 | 8 | 1482 | 537 | 316 | 1495 |
| | 220 | 4 | 355M/L | 1050 | 985 | 1100 | 2345 | 715 | 570 | 1435 | 970 | 220 | 8 | 1482 | 537 | 316 | 1550 |
| | 250 | 4 | 355M/L | 1050 | 985 | 1100 | 2345 | 715 | 570 | 1435 | 970 | 220 | 8 | 1482 | 537 | 316 | 1550 |
| | 260 | 4 | 355M/L | 1050 | 985 | 1100 | 2345 | 715 | 570 | 1435 | 970 | 220 | 8 | 1482 | 537 | 316 | 1550 |
| | 280 | 4 | 355M/L | 1050 | 985 | 1100 | 2345 | 715 | 570 | 1435 | 970 | 220 | 8 | 1482 | 537 | 316 | 1600 |
| | 300 | 4 | 355M/L | 1050 | 985 | 1100 | 2345 | 715 | 570 | 1435 | 970 | 220 | 8 | 1482 | 537 | 316 | 1600 |
| | 315 | 4 | 355M/L | 1050 | 985 | 1100 | 2345 | 715 | 570 | 1435 | 970 | 220 | 8 | 1482 | 537 | 316 | 1750 |
| | 330 | 4 | 355M/L | 1050 | 985 | 1100 | 2345 | 715 | 570 | 1435 | 970 | 220 | 8 | 1482 | 537 | 316 | 1810 |
| | 355 | 4 | 355M/L | 1050 | 985 | 1100 | 2345 | 715 | 570 | 1435 | 970 | 220 | 8 | 1482 | 537 | 316 | 2095 |
| | 400 | 4 | 355A/B | 1050 | 985 | 1100 | 2540 | 780 | 570 | 1435 | 970 | 220 | 8 | 1677 | 588 | 362 | 2089 |

| Size | Power (KW) | N° of poles | Frame size | Pump and baseplate dimensions (mm) | | | | | | | | | | Anchor bolts qty. | Motor | | Weight (kg) | |
|---------|---------------|----------------|---------------|------------------------------------|----------------|----------------|----------------|----------------|----------------|----------------|----------------|----------------|---|----------------------|----------------|---------------|-------------|--|
| | | | | b ₂ | G ₁ | G ₂ | I ₃ | I ₄ | h ₄ | h ₅ | h ₆ | h ₈ | q | | h ₇ | Base frame | Motor | |
| 350-510 | 75 | 6 | 315S/M | 1060 | 1000 | 1100 | 2100 | 640 | 519 | 1339 | 919 | 169 | 8 | 1274 | 436 | 251 | 920 | |
| | 90 | 6 | 315S/M | 1060 | 1000 | 1100 | 2100 | 640 | 519 | 1339 | 919 | 169 | 8 | 1274 | 436 | 251 | 990 | |
| | 110 | 6 | 315S/M | 1060 | 1000 | 1100 | 2100 | 640 | 519 | 1339 | 919 | 169 | 8 | 1274 | 436 | 251 | 1040 | |
| | 150 | 6 | 315L | 1060 | 1000 | 1100 | 2100 | 640 | 519 | 1339 | 919 | 169 | 8 | 1385 | 436 | 251 | 1200 | |
| | 160 | 6 | 315L | 1060 | 1000 | 1100 | 2100 | 640 | 519 | 1339 | 919 | 169 | 8 | 1385 | 436 | 251 | 1230 | |
| | 185 | 6 | 355M/L | 1050 | 985 | 1100 | 2345 | 715 | 570 | 1390 | 970 | 220 | 8 | 1482 | 537 | 316 | 1550 | |
| | 200 | 6 | 355M/L | 1050 | 985 | 1100 | 2345 | 715 | 570 | 1390 | 970 | 220 | 8 | 1482 | 537 | 316 | 1620 | |
| | 220 | 6 | 355M/L | 1050 | 985 | 1100 | 2345 | 715 | 570 | 1390 | 970 | 220 | 8 | 1482 | 537 | 316 | 1710 | |
| | 250 | 6 | 355M/L | 1050 | 985 | 1100 | 2345 | 715 | 570 | 1390 | 970 | 220 | 8 | 1482 | 537 | 316 | 1830 | |
| | 280 | 4 | 355M/L | 1050 | 985 | 1100 | 2345 | 715 | 570 | 1390 | 970 | 220 | 8 | 1482 | 537 | 316 | 1600 | |
| | 300 | 4 | 355M/L | 1050 | 985 | 1100 | 2345 | 715 | 570 | 1390 | 970 | 220 | 8 | 1482 | 537 | 316 | 1600 | |
| | 315 | 4 | 355M/L | 1050 | 985 | 1100 | 2345 | 715 | 570 | 1390 | 970 | 220 | 8 | 1482 | 537 | 316 | 1750 | |
| | 330 | 4 | 355M/L | 1050 | 985 | 1100 | 2345 | 715 | 570 | 1390 | 970 | 220 | 8 | 1482 | 537 | 316 | 1810 | |
| | 355 | 4 | 355M/L | 1050 | 985 | 1100 | 2345 | 715 | 570 | 1390 | 970 | 220 | 8 | 1482 | 537 | 316 | 2095 | |
| | 400 | 4 | 355A/B | 1050 | 985 | 1100 | 2345 | 780 | 570 | 1390 | 970 | 220 | 8 | 1677 | 588 | 362 | 2089 | |
| | 500 | 4 | 355A/B | 1050 | 985 | 1100 | 2345 | 780 | 570 | 1390 | 970 | 220 | 8 | 1677 | 588 | 362 | 2246 | |
| | 500 | 4 | 355A/B | 1050 | 985 | 1100 | 2345 | 780 | 570 | 1390 | 970 | 220 | 8 | 1677 | 588 | 362 | 2246 | |

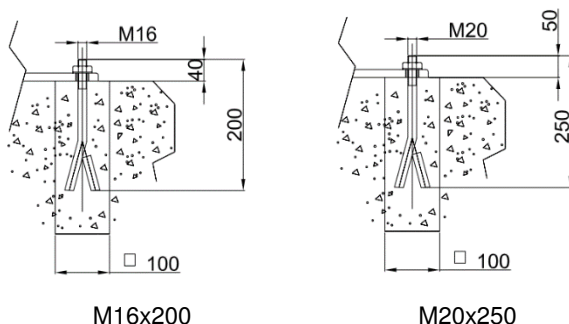
AW Coupling

| Size | Power (KW) | N° of poles | Frame size | Pump and baseplate dimensions (mm) | | | | | | | | | | Anchor bolts qty. | Motor | | Weight (kg) | |
|---------|---------------|----------------|---------------|------------------------------------|----------------|----------------|----------------|----------------|----------------|----------------|----------------|----------------|---|----------------------|----------------|---------------|-------------|--|
| | | | | b ₂ | G ₁ | G ₂ | I ₃ | I ₄ | h ₄ | h ₅ | h ₆ | h ₈ | q | | h ₇ | Base frame | Motor | |
| 350-360 | 22 | 6 | 200L | 820 | 770 | 850 | 1740 | 770 | 438 | 1198 | 788 | 118 | 6 | 767 | 261 | 157 | 225 | |
| | 30 | 6 | 225S/M | 810 | 750 | 850 | 1810 | 805 | 489 | 1249 | 839 | 169 | 6 | 886 | 315 | 190 | 380 | |
| | 37 | 6 | 250S/M | 810 | 750 | 850 | 1880 | 840 | 489 | 1249 | 839 | 169 | 6 | 965 | 337 | 201 | 430 | |
| | 45 | 6 | 280S/M | 810 | 750 | 850 | 1960 | 880 | 489 | 1249 | 839 | 169 | 6 | 1101 | 410 | 206 | 640 | |
| | 55 | 6 | 280S/M | 810 | 750 | 850 | 1960 | 880 | 489 | 1249 | 839 | 169 | 6 | 1101 | 410 | 206 | 665 | |
| | 75 | 6 | 315S/M | 810 | 750 | 850 | 2110 | 640 | 489 | 1249 | 839 | 169 | 6 | 1274 | 436 | 217 | 920 | |
| | 75 | 4 | 280S/M | 810 | 750 | 850 | 1960 | 880 | 489 | 1249 | 839 | 169 | 6 | 1101 | 410 | 206 | 630 | |
| | 110 | 4 | 280S/M | 810 | 750 | 850 | 1960 | 880 | 489 | 1249 | 839 | 169 | 6 | 1101 | 410 | 206 | 800 | |
| | 200 | 4 | 355M/L | 800 | 735 | 850 | 2360 | 720 | 540 | 1300 | 890 | 220 | 8 | 1482 | 537 | 278 | 1495 | |
| 350-430 | 55 | 6 | 280S/M | 1060 | 1000 | 1100 | 2040 | 920 | 519 | 1384 | 919 | 169 | 6 | 1101 | 410 | 235 | 665 | |
| | 75 | 6 | 315S/M | 1060 | 1000 | 1100 | 2160 | 660 | 519 | 1384 | 919 | 169 | 8 | 1274 | 436 | 252 | 920 | |
| | 90 | 6 | 315S/M | 1060 | 1000 | 1100 | 2160 | 660 | 519 | 1384 | 919 | 169 | 8 | 1274 | 436 | 252 | 990 | |
| | 110 | 6 | 315S/M | 1060 | 1000 | 1100 | 2160 | 660 | 519 | 1384 | 919 | 169 | 8 | 1274 | 436 | 252 | 1040 | |
| | 160 | 4 | 315S/M | 1060 | 1000 | 1100 | 2160 | 660 | 519 | 1384 | 919 | 169 | 8 | 1274 | 436 | 252 | 1080 | |
| | 185 | 4 | 315S/M | 1060 | 1000 | 1100 | 2160 | 660 | 519 | 1384 | 919 | 169 | 8 | 1274 | 436 | 252 | 1150 | |
| | 200 | 4 | 355M/L | 1050 | 985 | 1100 | 2435 | 745 | 570 | 1435 | 970 | 220 | 8 | 1482 | 537 | 319 | 1495 | |
| | 220 | 4 | 355M/L | 1050 | 985 | 1100 | 2435 | 745 | 570 | 1435 | 970 | 220 | 8 | 1482 | 537 | 319 | 1550 | |
| | 250 | 4 | 355M/L | 1050 | 985 | 1100 | 2435 | 745 | 570 | 1435 | 970 | 220 | 8 | 1482 | 537 | 319 | 1550 | |
| | 260 | 4 | 355M/L | 1050 | 985 | 1100 | 2435 | 745 | 570 | 1435 | 970 | 220 | 8 | 1482 | 537 | 319 | 1550 | |
| | 280 | 4 | 355M/L | 1050 | 985 | 1100 | 2435 | 745 | 570 | 1435 | 970 | 220 | 8 | 1482 | 537 | 319 | 1600 | |
| | 300 | 4 | 355M/L | 1050 | 985 | 1100 | 2435 | 745 | 570 | 1435 | 970 | 220 | 8 | 1482 | 537 | 319 | 1600 | |
| | 315 | 4 | 355M/L | 1050 | 985 | 1100 | 2435 | 745 | 570 | 1435 | 970 | 220 | 8 | 1482 | 537 | 319 | 1750 | |
| | 330 | 4 | 355M/L | 1050 | 985 | 1100 | 2435 | 745 | 570 | 1435 | 970 | 220 | 8 | 1482 | 537 | 319 | 1810 | |
| | 355 | 4 | 355M/L | 1050 | 985 | 1100 | 2435 | 745 | 570 | 1435 | 970 | 220 | 8 | 1482 | 537 | 319 | 2095 | |
| | 400 | 4 | 355A/B | 1050 | 985 | 1100 | 2435 | 745 | 570 | 1435 | 970 | 220 | 8 | 1677 | 588 | 366 | 2089 | |

| Size | Power (KW) | N° of poles | Frame size | Pump and baseplate dimensions (mm) | | | | | | | | | | Anchor bolts qty. | Motor | | Weight (kg) | |
|---------|------------|-------------|------------|------------------------------------|----------------|----------------|----------------|----------------|----------------|----------------|----------------|----------------|---|-------------------|----------------|------------|-------------|--|
| | | | | b ₂ | G ₁ | G ₂ | l ₃ | l ₄ | h ₄ | h ₅ | h ₆ | h ₈ | q | | h ₇ | Base frame | Motor | |
| 350-510 | 75 | 6 | 315S/M | 1060 | 1000 | 1100 | 2160 | 660 | 519 | 1339 | 919 | 169 | 8 | 1274 | 436 | 252 | 920 | |
| | 90 | 6 | 315S/M | 1060 | 1000 | 1100 | 2160 | 660 | 519 | 1339 | 919 | 169 | 8 | 1274 | 436 | 252 | 990 | |
| | 110 | 6 | 315S/M | 1060 | 1000 | 1100 | 2160 | 660 | 519 | 1339 | 919 | 169 | 8 | 1274 | 436 | 252 | 1040 | |
| | 150 | 6 | 315L | 1060 | 1000 | 1100 | 2160 | 660 | 519 | 1339 | 919 | 169 | 8 | 1385 | 436 | 252 | 1200 | |
| | 160 | 6 | 315L | 1060 | 1000 | 1100 | 2160 | 660 | 519 | 1339 | 919 | 169 | 8 | 1385 | 436 | 252 | 1230 | |
| | 185 | 6 | 355M/L | 1050 | 985 | 1100 | 2435 | 745 | 570 | 1390 | 970 | 220 | 8 | 1482 | 537 | 319 | 1550 | |
| | 200 | 6 | 355M/L | 1050 | 985 | 1100 | 2435 | 745 | 570 | 1390 | 970 | 220 | 8 | 1482 | 537 | 319 | 1620 | |
| | 220 | 6 | 355M/L | 1050 | 985 | 1100 | 2435 | 745 | 570 | 1390 | 970 | 220 | 8 | 1482 | 537 | 319 | 1710 | |
| | 250 | 6 | 355M/L | 1050 | 985 | 1100 | 2435 | 745 | 570 | 1390 | 970 | 220 | 8 | 1482 | 537 | 319 | 1830 | |
| | 280 | 4 | 355M/L | 1050 | 985 | 1100 | 2435 | 745 | 570 | 1390 | 970 | 220 | 8 | 1482 | 537 | 319 | 1600 | |
| | 300 | 4 | 355M/L | 1050 | 985 | 1100 | 2435 | 745 | 570 | 1390 | 970 | 220 | 8 | 1482 | 537 | 319 | 1600 | |
| | 315 | 4 | 355M/L | 1050 | 985 | 1100 | 2435 | 745 | 570 | 1390 | 970 | 220 | 8 | 1482 | 537 | 319 | 1750 | |
| | 330 | 4 | 355M/L | 1050 | 985 | 1100 | 2435 | 745 | 570 | 1390 | 970 | 220 | 8 | 1482 | 537 | 319 | 1810 | |
| | 355 | 4 | 355M/L | 1050 | 985 | 1100 | 2435 | 745 | 570 | 1390 | 970 | 220 | 8 | 1482 | 537 | 319 | 2095 | |
| | 400 | 4 | 355A/B | 1050 | 985 | 1100 | 2630 | 780 | 570 | 1390 | 970 | 220 | 8 | 1677 | 588 | 366 | 2089 | |
| | 500 | 4 | 355A/B | 1050 | 985 | 1100 | 2630 | 780 | 570 | 1390 | 970 | 220 | 8 | 1677 | 588 | 366 | 2246 | |
| | 500 | 4 | 355A/B | 1050 | 985 | 1100 | 2630 | 780 | 570 | 1390 | 970 | 220 | 8 | 1677 | 588 | 366 | 2246 | |

Anchor bolts

Anchor bolts dimensions



| Size | Frame size | Anchor bolt size |
|---|--------------------|------------------|
| 80-210 80-270 80-370 | 100L to 225S/M | M16x200 |
| 100-250 100-310 100-375 | 132S/M/L to 280S/M | M16x200 |
| | 315S/M | M20x250 |
| 125-230 125-290 125-365 150-290 150-360 | 132S/M/L to 280S/M | M16x200 |
| | 315S/M | M20x250 |
| 125-500 | 180M to 280S/M | M16x200 |
| | 315S/M | M20x250 |
| 150-460 | 200M/L to 280S/M | M16x200 |
| | 315S/M and 355M/L | M20x250 |
| 150-605 | 225S/M and 250S/M | M16x200 |
| | 280S/M to 355M/L | M20x250 |
| 200-320 200-420 | 160M/L to 250S/M | M16x200 |
| | 280S/M and 315S/M | M20x250 |
| 200-520 | 250S/M to 355M/L | M20x250 |
| 200-670 250-370 | 200M/L to 355M/L | M20x250 |
| 250-480 | 250S/M to 355M/L | M20x250 |
| 250-600 250-800 300-560 | 315S/M and 355M/L | M20x250 |
| 300-300 | 180M to 250S/M | M16x200 |
| | 280S/M to 315S/M | M20x250 |
| 300-435 350-360 | 200M/L | M16x200 |
| | 225S/M to 355M/L | M20x250 |
| 300-700 350-430 350-510 | 280S/M to 355M/L | M20x250 |

KSB Brasil Ltda.
Rua José Rabello Portella, 400
Várzea Paulista SP 13220-540
Brasil <http://www.ksb.com>
Tel.: 11 4596 8500
SAK -KSB Customer Service
e-mail: sak@ksb.com

03/12/2021

1387.3941/02-EN